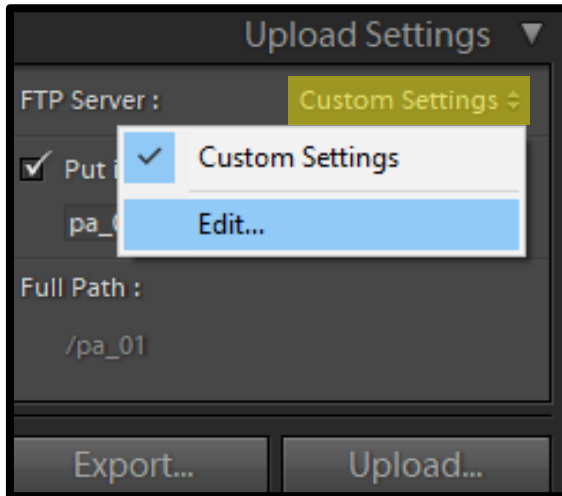
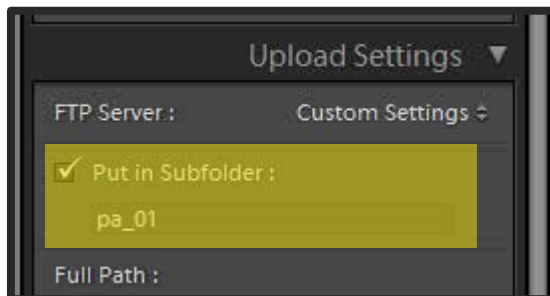
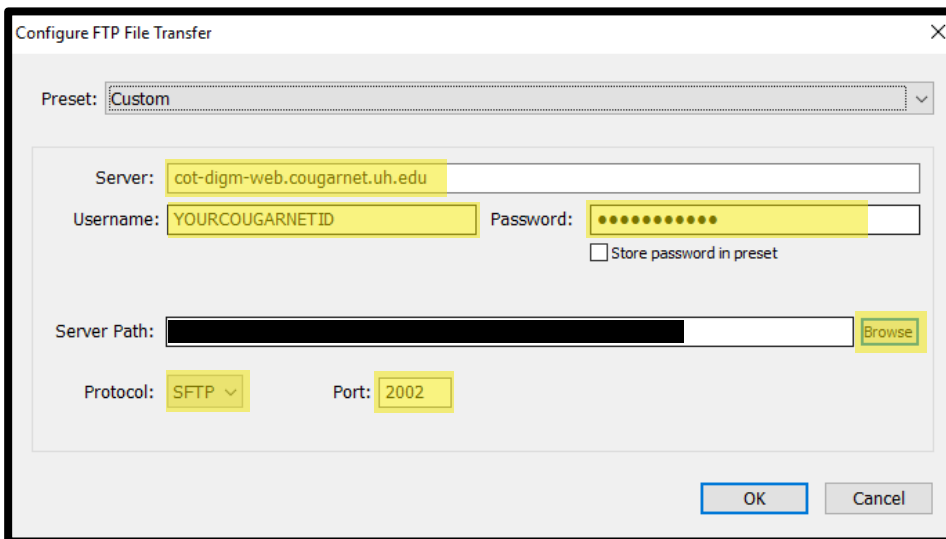


HOW TO CONNECT LIGHTROOM



1. Goto the web tab
1. Find Custom Settings at the bottom
2. Edit
3. Server:
cot-digm-web.cougarnet.uh.edu
4. Username and password is your cougarnet
5. Protocol:
SFTP
6. Port:
2002
7. Click browse to set server path, select public_html
8. Name the subfolder based on assignment instructions

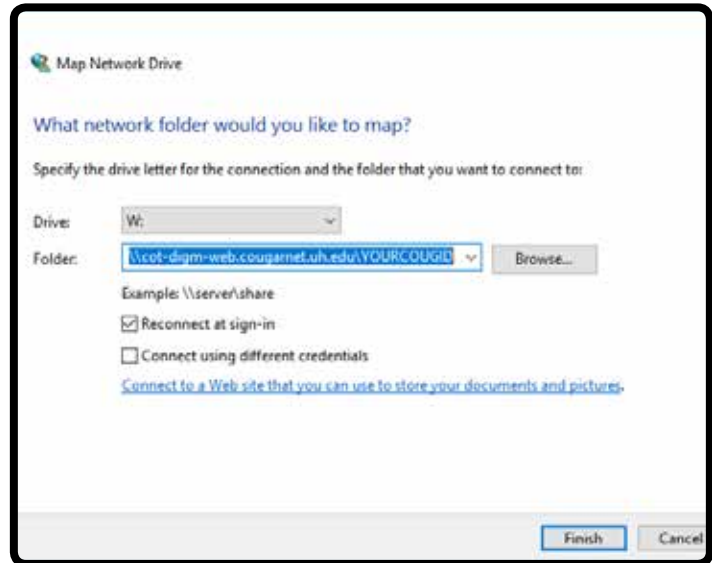


Be sure to edit the subfolder name for each assignment to avoid accidentally overwrite a previous assignment

Uploaded sites are available through your browser by going to:
cot-digm-web.cougarnet.uh.edu/~YOURCOUGID

← → ↻ 🏠

HOW TO CONNECT WEB SET/VERZ



1. Open file explorer
2. "This PC"
3. Computer in the top menu
4. Map network drive
5. Add
`\\cot-digm-web.cougarnet.uh.edu\YOURCOUGID`

Uploaded sites are available through your browser by going to:
`cot-digm-web.cougarnet.uh.edu/~YOURCOUGID`