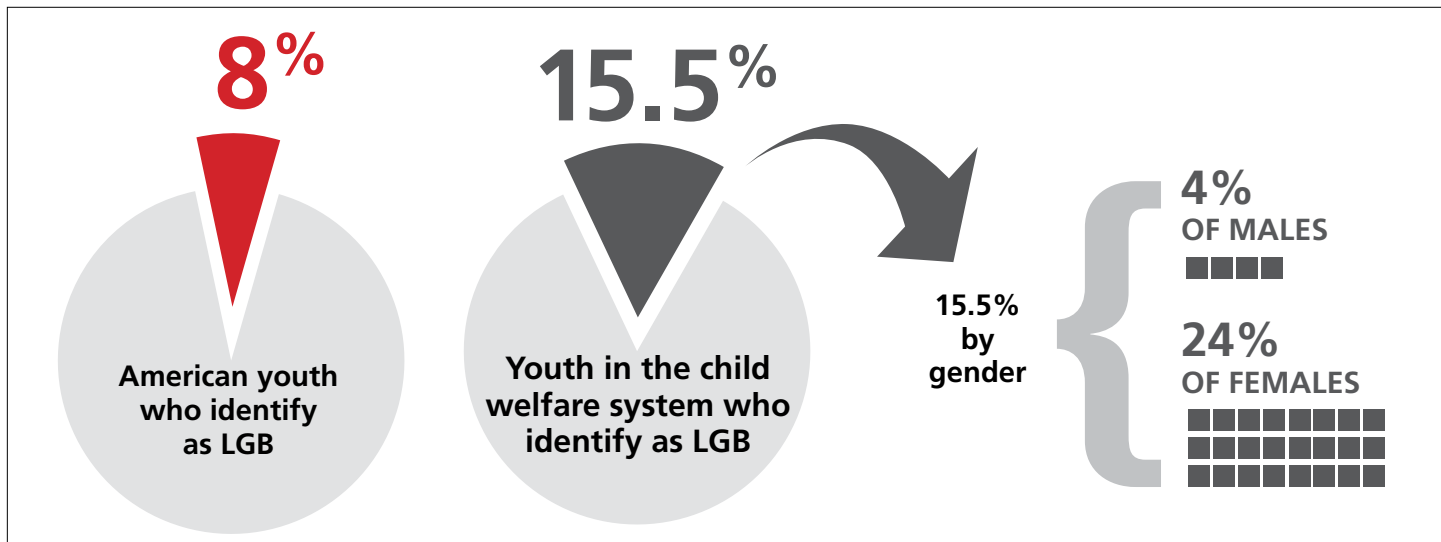


LGB Youth in Child Welfare

From *Sexual Minority Youth in Child Welfare: Prevalence, Risk and Outcomes*,
University of Houston Graduate College of Social Work



The proportion of youth in child welfare who openly identify as lesbian, gay or bisexual is nearly double that of LGB youth in the overall population.

Males appear to be underrepresented; Boys may be more reluctant to disclose their sexual orientation due to safety concerns and gender role expectations

This translates to approximately **146,000 YOUTH** within our child welfare systems who openly identify as gay, lesbian or bisexual.

The First Nationally Representative Data

This study is based on data from the Second National Survey of Child and Adolescent Well-Being (NSCAW-II), the first nationally representative survey of youth with child welfare involvement to include data on youth sexual orientation.

Ongoing data collection regarding youth SOGIE (sexual orientation, gender identity and expression) is needed to gain a deeper understanding of LGB youth and those who identify in other ways, such as queer or questioning, non-binary, or transgender. These types of information are essential for youth safety, stability and permanency.

Youth of color and LGB youth of color are overrepresented in the child welfare system.

