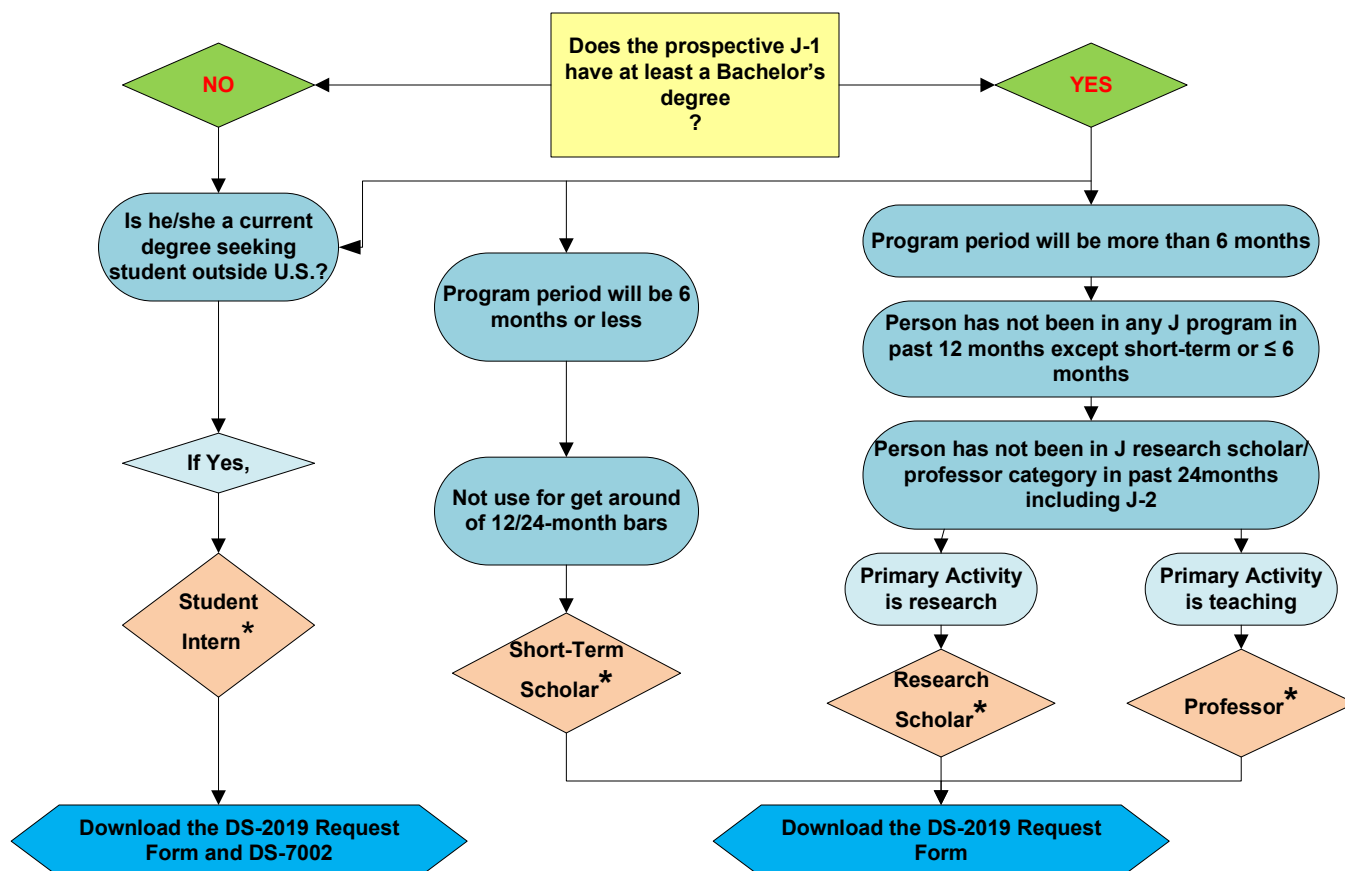


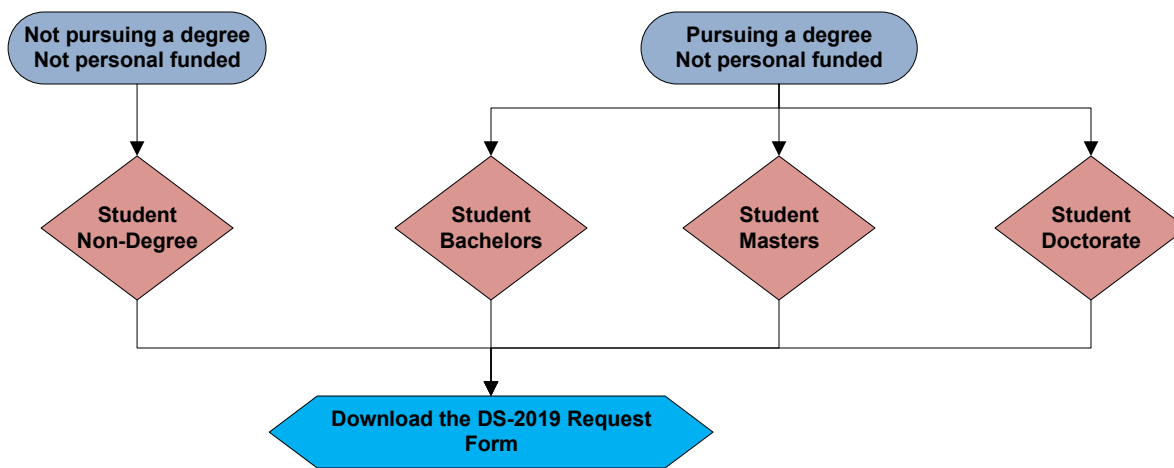
UNIVERSITY of HOUSTON

INTERNATIONAL STUDENT & SCHOLAR SERVICES OFFICE

How to Select Category for Prospective J-1 Exchange Visitor Not Admitted for Studies



How to select category for prospective J-1 Exchange Visitor Admitted for Studies (must go through admission process)



*Requires proof of financial support documentation with a minimum of \$1220/month

Please visit ISSSO website for detailed information regarding eligibility for each J-1 category, insurance requirements and etc.

uh.edu/oisss/