




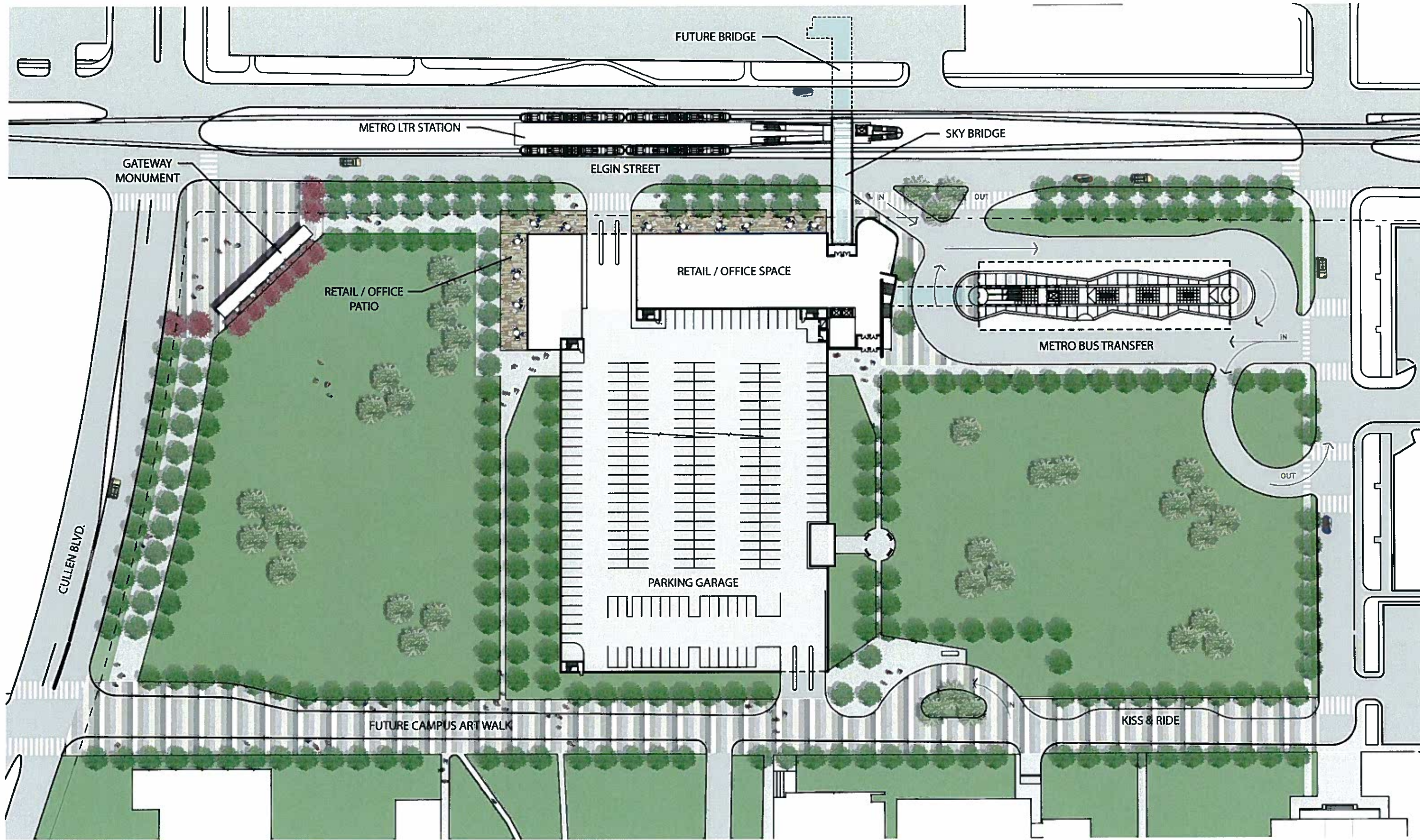




-  (MMTC) MULTI MODAL TRANSPORTATION CENTERS
-  CAMPUS SHUTTLE CIRCULATOR
-  UNIVERSITY LIGHT RAIL CORRIDOR LINE
-  SOUTHEAST LIGHT RAIL CORRIDOR LINE
-  PROPOSED LIGHT RAIL PLATFORM LOCATIONS

UNIVERSITY of HOUSTON_MULTIMODAL TRANSPORTATION CENTERS (MMTC)_EXHIBIT 2



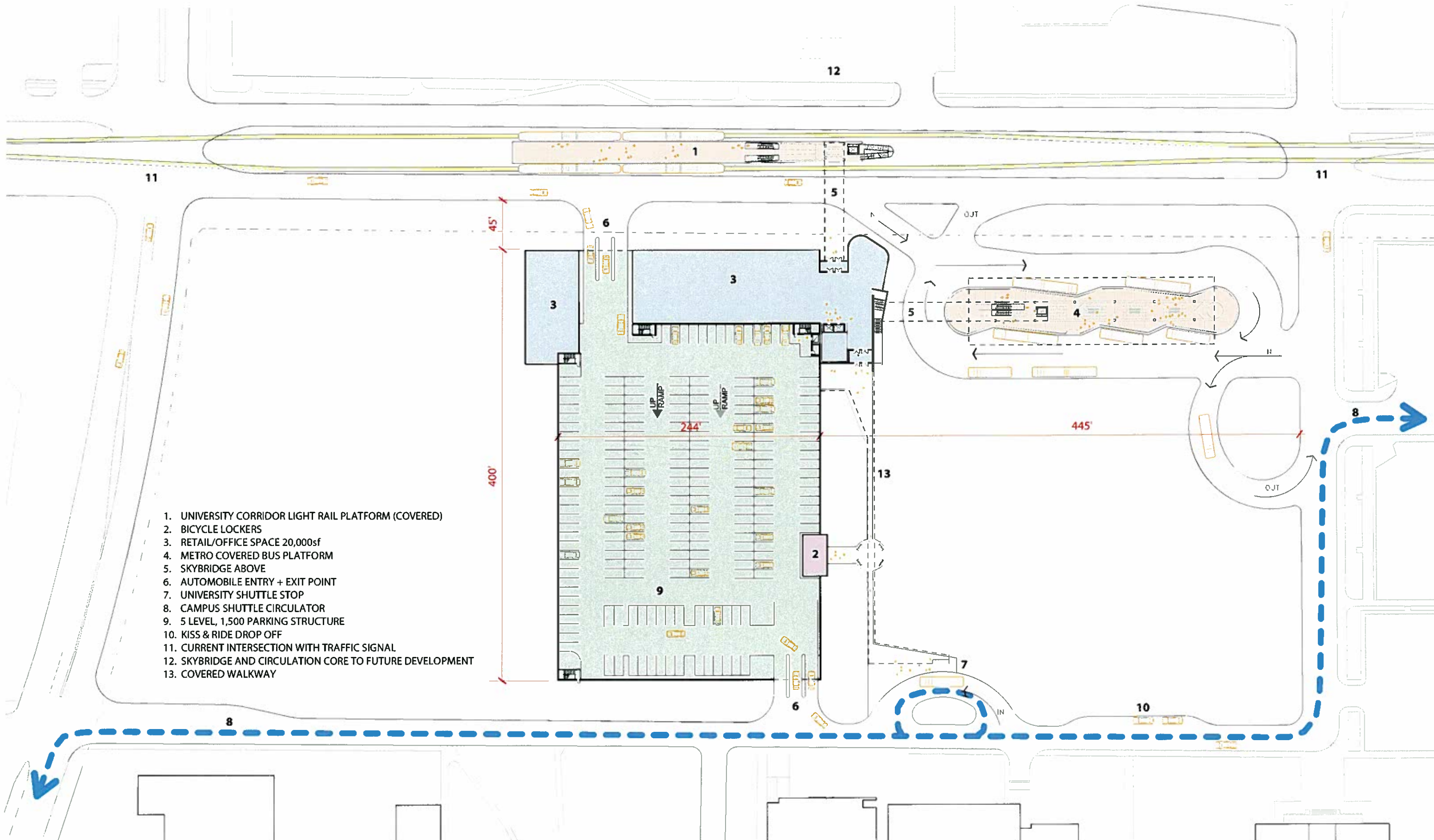


UNIVERSITY of HOUSTON_MULTIMODAL TRANSPORTATION CENTERS (MMTC)_EXHIBIT 3



20 JANUARY 2009

SITE PLAN



- 1. UNIVERSITY CORRIDOR LIGHT RAIL PLATFORM (COVERED)
- 2. BICYCLE LOCKERS
- 3. RETAIL/OFFICE SPACE 20,000sf
- 4. METRO COVERED BUS PLATFORM
- 5. SKYBRIDGE ABOVE
- 6. AUTOMOBILE ENTRY + EXIT POINT
- 7. UNIVERSITY SHUTTLE STOP
- 8. CAMPUS SHUTTLE CIRCULATOR
- 9. 5 LEVEL, 1,500 PARKING STRUCTURE
- 10. KISS & RIDE DROP OFF
- 11. CURRENT INTERSECTION WITH TRAFFIC SIGNAL
- 12. SKYBRIDGE AND CIRCULATION CORE TO FUTURE DEVELOPMENT
- 13. COVERED WALKWAY



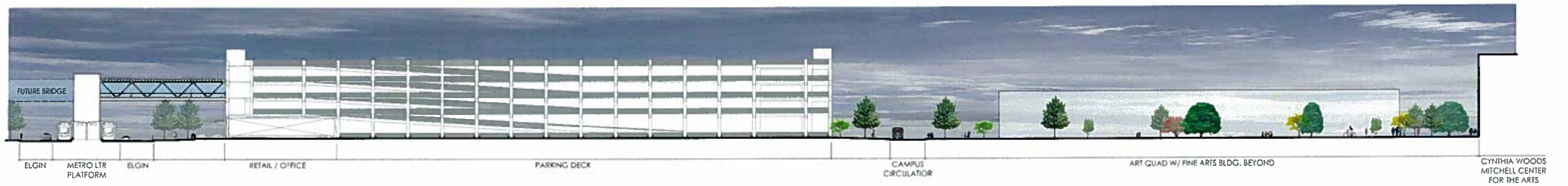
UNIVERSITY of HOUSTON_MULTIMODAL TRANSPORTATION CENTERS (MMTC)_EXHIBIT 4



20.JANUARY.2009

MMTC BUILDING PLAN





UNIVERSITY of HOUSTON_MULTIMODAL TRANSPORTATION CENTERS (MMTC)_EXHIBIT 5



20 JANUARY 2009

BUILDING+SITE SECTION

Parking Garage		Cars	Cost/Car	Cost/Area
	1500 Car Garage	1,500	\$14,000	\$21,000,000
	TOTAL	1,500	\$14,000	\$21,000,000
Retail/Office		S.F.	Cost/S.F.	Cost/Area
	General Use Retail (Shell Only)	20,000	\$125	\$2,500,000
	TOTAL	20,000	\$125	\$2,500,000
Bridges Skywalk		L.F.	Cost/L.F.	Cost/Area
	Overhead Links to METRO/Garage/Bus	400	\$1,500	\$600,000
	TOTAL	400	\$1,500	\$600,000
METRO Bus Transfer Center		S.F.	Cost/S.F.	Cost/Area
	Covered Drop-off	14,236	\$75	\$1,067,700
	TOTAL	14,236	\$75	\$1,067,700
METRO Platform Upgrades		Units	Cost/Unit	Cost/Area
	UH METRO Station Upgrades	1	\$100,000	\$100,000
	TOTAL	1	\$100,000	\$100,000
Landscaping				
	Site Work(Mobilization), Hardscape & Softscape			\$2,796,500
	TOTAL			\$2,796,500
Sitework/Paving		Units	Cost/Unit	Cost/Area
	Paving, Stormwater, Wastewater & Water	1	\$1,394,000	\$1,394,000
	TOTAL	1	\$1,394,000	\$1,394,000
TOTAL COST				\$29,458,200
	Contingency at 15%			\$4,418,730
GRAND TOTAL				\$33,876,930

