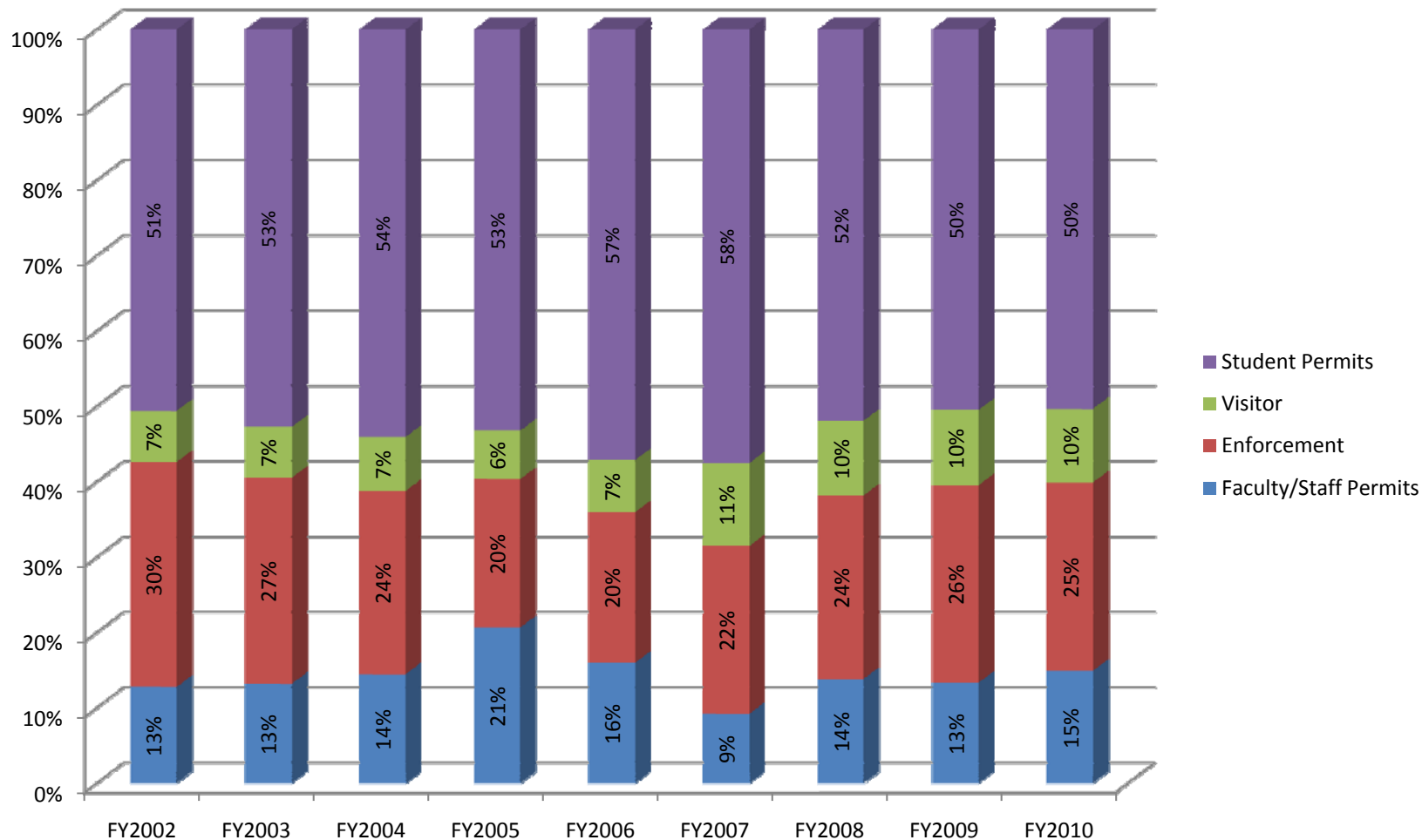


UNIVERSITY of HOUSTON  
Parking and Transportation Services  
Proposed 2012 – 2013 Parking Plan  
Town Hall

## DEPARTMENT OVERVIEW

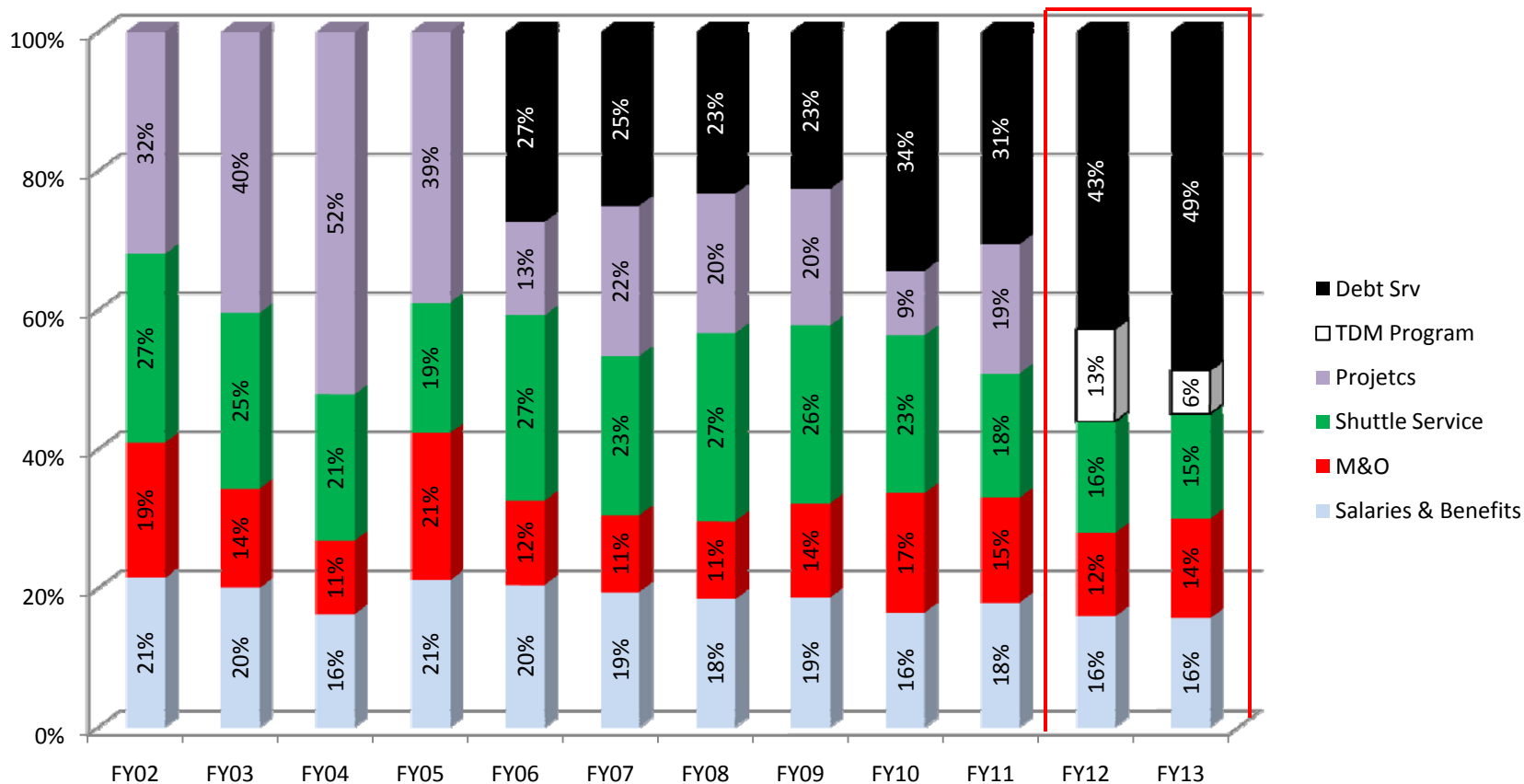
- An Auxiliary Service
  - Self Supporting from parking service fees
    - No State Funding
    - Cannot use other University funds
    - Can enter into debt service
    - Sole purpose of department is to serve UH

## REVENUE SOURCE PERCENTAGES



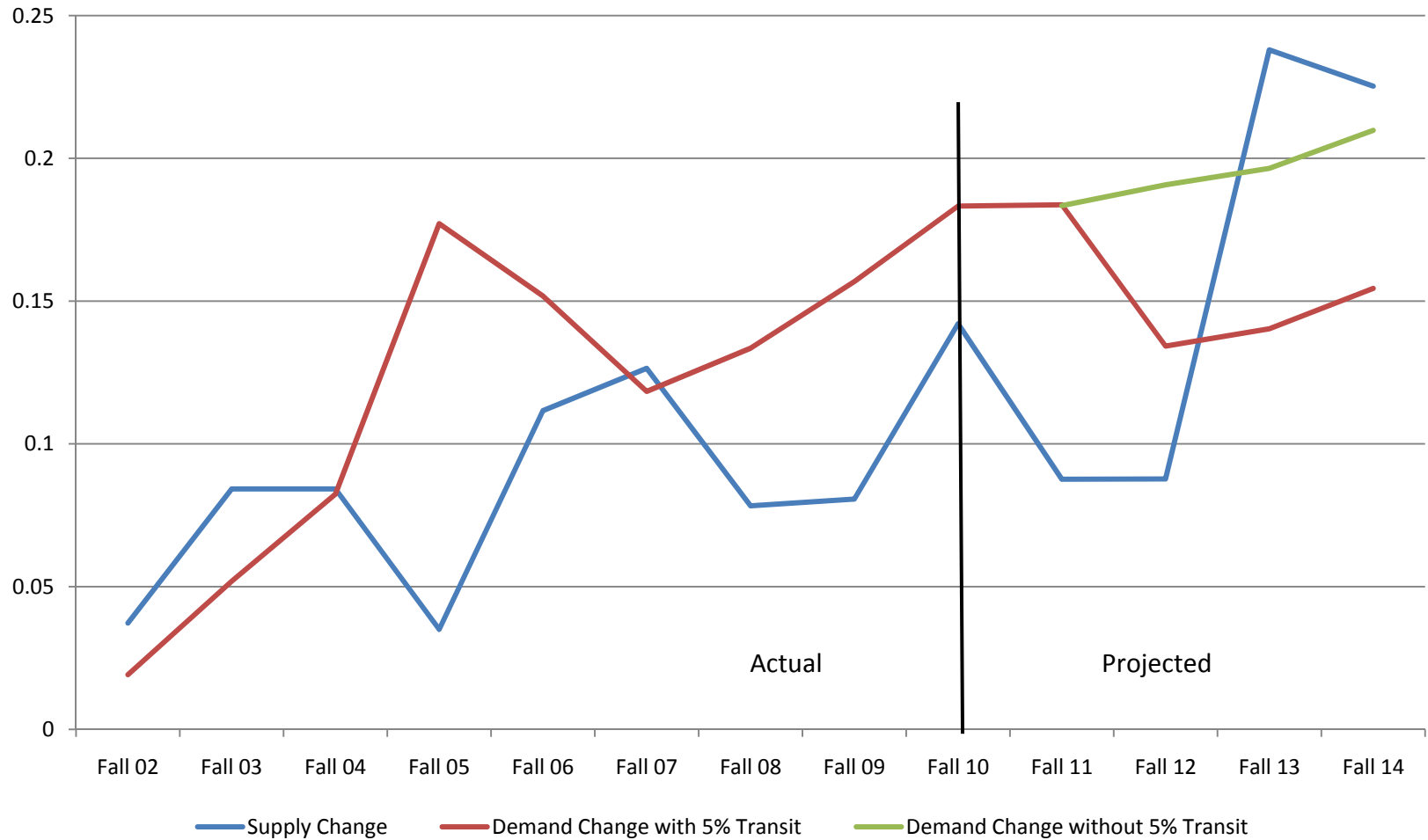
This graph illustrates PTS still relies on permit revenue for 55% of its funding. Dependency on parking enforcement has decreased while visitor revenue has increased.

# EXPENDITURE COMPARISON - % OF TOTAL



FY02-FY10 Actual, FY11 Budgeted, FY12-FY13 Projected

# CUMULATIVE % CHANGE IN PARKING SUPPLY & DEMAND



The gap between parking supply and demand started to widen in Fall 2008. It will continue to do so until Fall of 2011, unless PTS is able to generate the funding necessary to support a third parking garage opening in Fall of 2011.

# SERVICES ADDED OVER THE PAST TWO YEARS

- Online Parking Registration
- NextBus
- Connect by Hertz
- METRO Q-card issuance and loading
- Improved Web Site
- Installation of “Luke” Parking Meters
- Reconfiguration of Welcome Center Garage
- Opening of East Parking Garage
- Extended Service Hours
- Parking Availability Map (sponsored by UHDPS)
- ERP Parking Program



**Get it  
here.**

**connect**  
by Hertz



## PLANNED SERVICE IMPROVEMENTS

- Online citation appeals verdicts
- Installation of more “Luke” Parking Meters
- Parking Customer Service Call Center
- Addition of Parking Lots and Structures
- Installation of More Bike Racks
- Alternative Transportation Plan

2012 – 2013  
PARKING PLAN

## BACKGROUND

- Parking deficit during peak times
- Poorly maintained parking facilities
- Inefficient visitor/event parking program
- Losing parking inventory as quickly as gained
- Campus enrollment and Customer Expectation growing at a faster rate than parking services
- PTS is poorly viewed by campus community



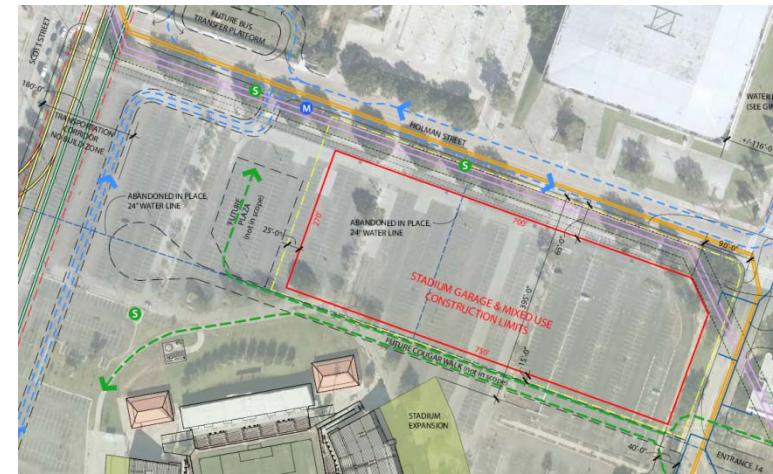
## CHALLENGES AHEAD

- Daily campus visits projected to increase 28% during the next decade
- Record enrollment Fall 2010 and will continue to increase
- Continued construction - elimination of 1,929 parking spaces in next two years
- Campus community's reluctance to embrace alternative forms of transportation
- Higher demands being placed on delivery of services
- Changing campus perspective of PTS

# GOALS OF PARKING PLAN



- Increase the parking supply to get ahead of the supply/demand curve
- Improve the physical parking facilities for long-term serviceability
- Improve customer service (i.e. PTS image)
- Improve visitor/event parking program
- Develop and promote Alternative Transportation Program (ATP)



## GOAL #1:

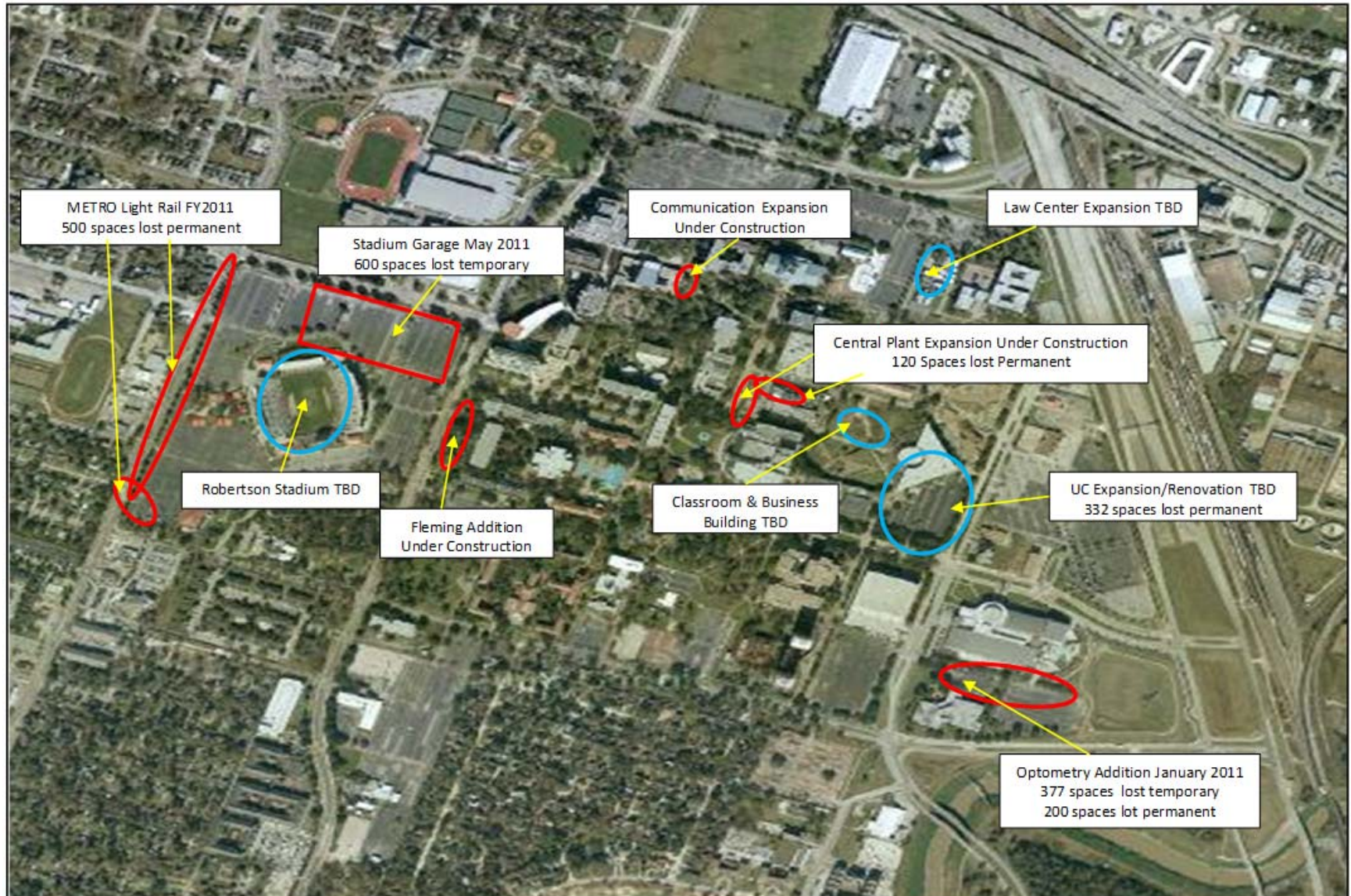
Increase the parking supply and get ahead of the supply/demand curve

## GOAL #2:

Improve the physical parking facilities for long-term serviceability

## PLANNED CONSTRUCTION PROJECTS AND THEIR EFFECT ON CAMPUS PARKING

Lost Spaces in FY2011 – 1,597 (800 Permanent) / Total lost spaces 1,929 (1,100 Permanent)



# 2012-2013 PROPOSED PARKING PLAN



Leek Street Lots – spring 2011 – 240 spaces  
Lot 16D Expansion – spring 2011 – 130 spaces

Garage #4 – fall 2015 – 2400 spaces

Stadium Garage – fall 2012 – 2400 spaces

18A Garage – fall 2014 – 600 spaces

Lot 19D expansion – spring 2011 – 132 spaces

Loop Road - 2012

13A Garage – fall 2014 – 400 spaces

Lot 20C Ent. – summer 2011

Garage #4 – fall 2015 – 1500 spaces

9B Lot Renovation 2014 & 2015

4A Lot Renovation 2012 & 2013

Bayou Oaks – spring 2011 – 80 spaces

McGregor Lot – summer 2012 – 500 spaces

**RED** – Project to be completed in FY2011

**GREEN** – Project to be completed in 2012

**PURPLE** – Proposed parking garages

**BLUE** – Parking lot renovation projects

# PROJECTED FALL PARKING SURPLUS/DEFICITS- 2012-2013 PROPOSED PARKING PLAN

## Parking Surplus/Deficit

	Actual		Projected Parking Avail for St and F/S				
	Fall 08	Fall 09	Fall 10	Fall 11	Fall 12	Fall 13	Fall 14
New Demand		851	490	181	(777)	179	889
Projected Demand	15,106	15,957	16,447	16,628	15,850	15,945	16,834
<b>Beginning Fall Supply</b>	16,667	15,907	16,884	15,964	15,966	18,415	18,213
Additions/Deletions	(760)	977	(920)	2	2,449	(202)	-
Ending Space Inventory	15,907	16,884	15,964	15,966	18,415	18,213	18,213
<b>Effective Fall Supply</b>	15,834	15,112	16,040	15,166	15,168	17,494	17,302
<b>Surplus/Deficit</b>	<b>728</b>	<b>(845)</b>	<b>(407)</b>	<b>(1,462)</b>	<b>(683)</b>	<b>1,549</b>	<b>468</b>

Fall 2012 an additional 5% of students will start using METRO

## GOAL #3:

Improve PTS Customer Service (Image)

## 2010 Student Satisfaction Survey

	% Satisfied				
	Spring				Change
	2010	2008	2006	2004	2010-08
Shuttle bus service	85.20%	79.39%	80.80%	83.90%	5.81%
Shuttle bus timeliness	75.20%	75.10%	71.50%	73.80%	0.10%
Shuttle bus frequency	72.00%	73.95%	73.60%	75.60%	-1.95%
Parking -office	48.80%	58.68%	61.30%	45.50%	-9.88%
Parking Garage convenience	48.40%				
Parking - Availability of spaces	25.40%	34.53%	31.00%	22.30%	-9.13%

## GOAL #4:

Improve Visitor/Event  
Parking Program

## KEYS TO IMPROVING VISITOR/EVENT PARKING

- Parking garages greatly enhance the visitor parking experience by making it easy to find available parking
- Garage also provide more parking options of event organizers and attendees
- The installation of “Luke” parking meters in designated areas of surface parking lots will also improve parking accessibility for visitors
- Development of event parking registration and policy

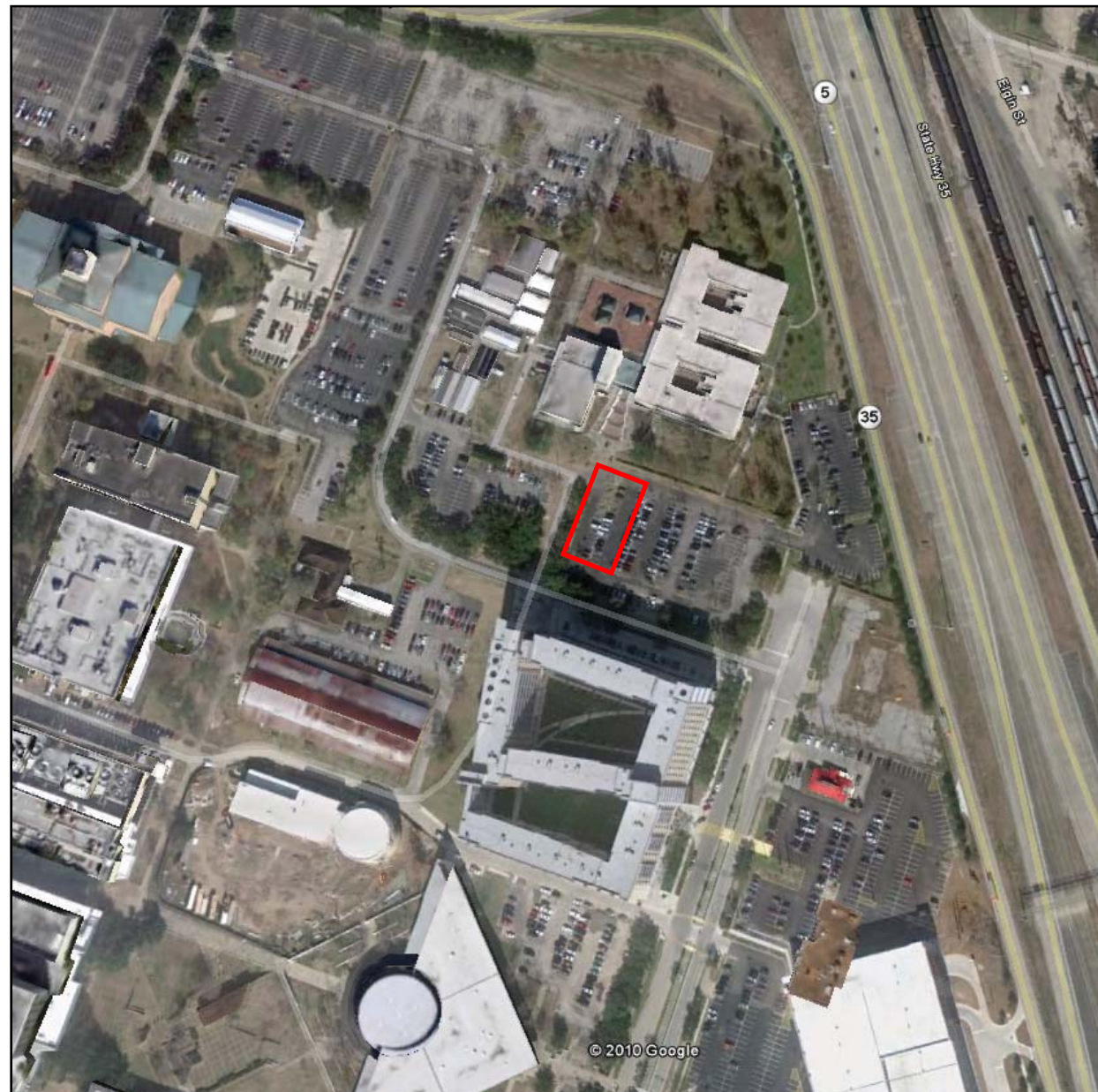
# 2012-2013 PROPOSED PARKING PLAN



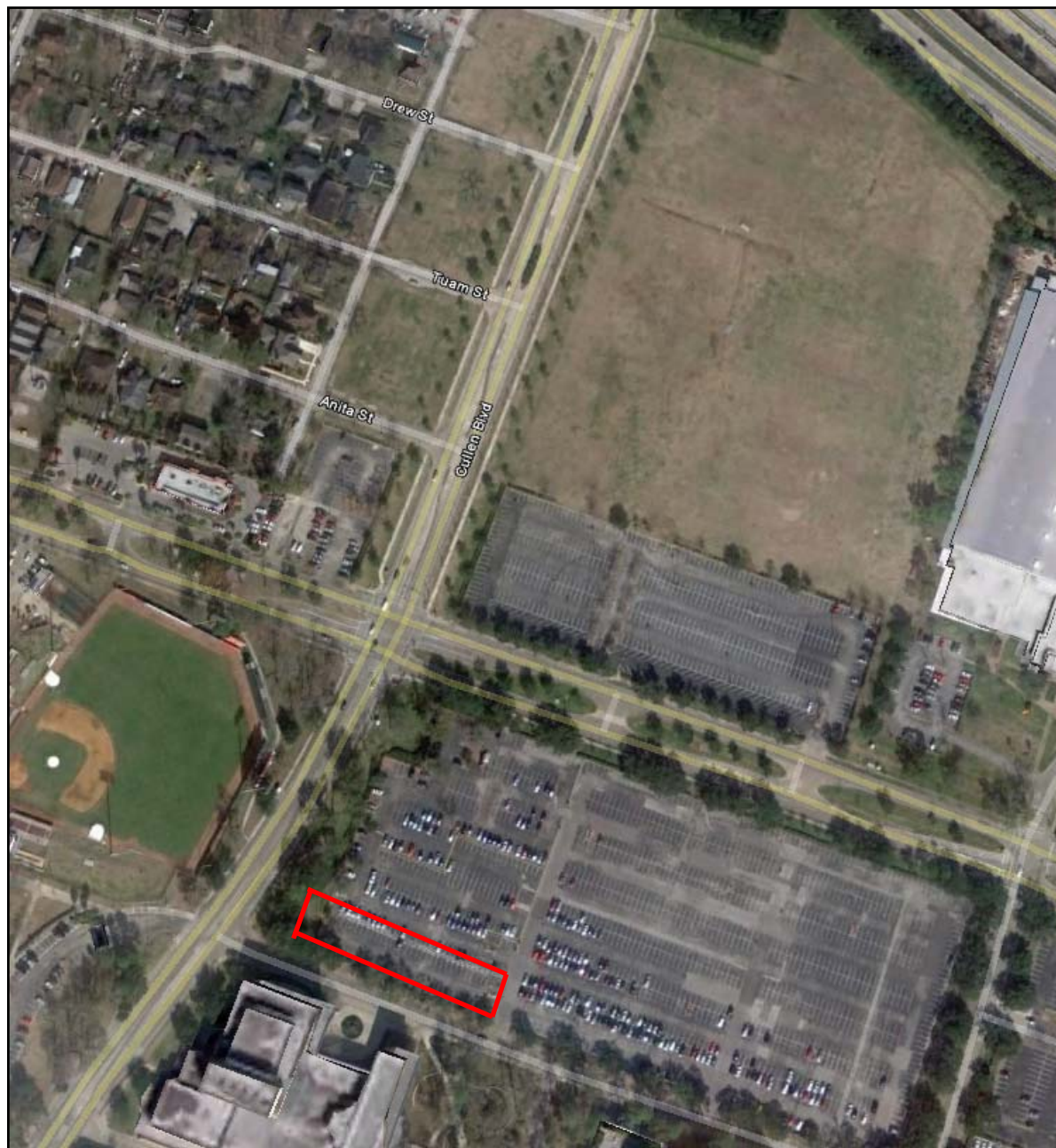
Visitor parking (Red Area) will be added to the Stadium Lots during garage construction.

Afterwards it will move into the garage and the area will become student parking

# 2012-2013 PROPOSED PARKING PLAN



A “Luke” parking meter will be added to the Law Center Lot.



Two “Luke” parking meters will be installed in lot 16F. These will also be used for event parking for Fine Arts

# 2012-2013 PROPOSED PARKING PLAN



One “Luke” will be installed at ERP to accommodate visitor parking

## GOAL #5:

Develop and Promote  
Alternative Transportation Program

# UH ALTERNATIVE TRANSPORTATION PLAN

- The purpose of the ATP is to reduce the number of vehicles driving to campus through a series of organized events, training programs, and incentives.
- Our Goal is to have 5% of the campus community using an alternative form of transportation by the end of FY 2012.

# ATP HIGHLIGHTS

## ▪ **Commuting Options**

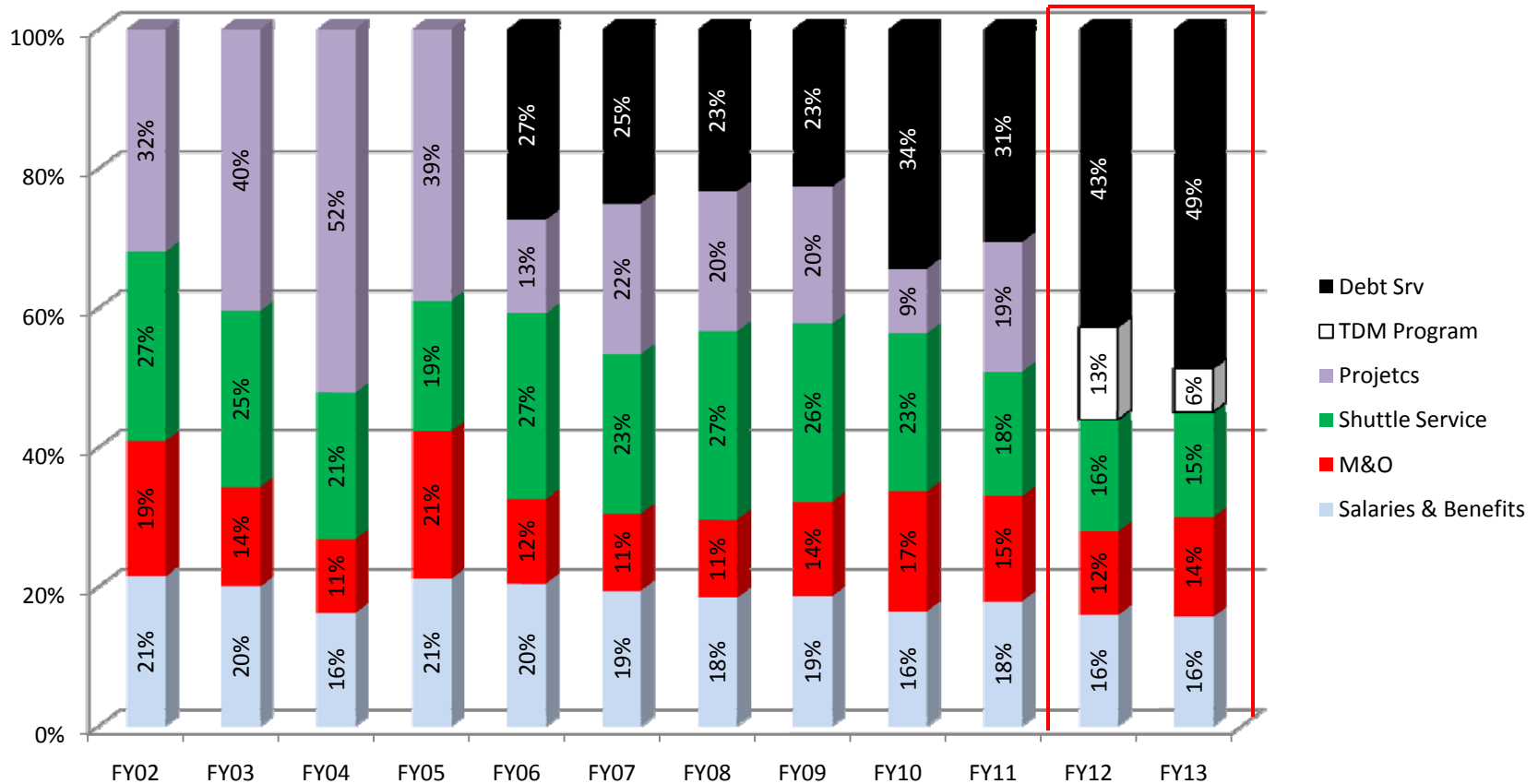
- Carpool
- Bicycle
- Bus
- Walk
- Vanpool

## ▪ **Program Components**

- Emergency Ride Home
- Cougar Line Shuttle
- METRO Ride Sponsor
- Daily Parking Permits
- Connect by Hertz
- Pre-Tax Payroll deductions
- Refer-A-Friend Program
- Ride matching Service

# Source of Plan Funding

# EXPENDITURE COMPARISON - % OF TOTAL



FY02-FY10 Actual, FY11 Budgeted, FY12-FY13 Projected

## VISITOR EVENT PARKING

- It is estimated that by FY2013, event and visitor parking will increase funding by \$350,000 annually.

## PARKING CITATION FINE COMPARISON – TEXAS UNIVERSITIES

	TAMU	UT Austin	TTU	UT SA	RICE	UNT	SMU	OTHER U AVERAGE	Current UH Fines	Proposed UH Fines
V01 PERMIT DISPLAYED INCORRECTLY		\$10	\$10	\$25	\$5	\$25	\$30	\$18	\$10	\$20
V03 PARKED ON SIDEWALK, CURB OR	\$40	\$25	\$25	\$25	\$25	\$25	\$40	\$29	\$20	\$30
V04 OVERTIME AT PARKING METER	\$40	\$15	\$20	\$25	\$25	\$20	\$30	\$25	\$20	\$25
V06 VIOLATION OF OTHER REGULATIO	\$40	\$25	\$20	\$25	\$25	\$25		\$27	\$20	\$25
V07 PARKED WITH INCORRECT PERMIT	\$40	\$25	\$25	\$50	\$25	\$35	\$30	\$33	\$25	\$30
V08 PARKED OR BLOCKED DRIVING LA	\$40	\$25	\$20	\$50	\$50	\$30	\$40	\$36	\$20	\$35
V10 BLOCKING SIDEWALK, CROSSWALK	\$40	\$25	\$25	\$50	\$50	\$30	\$40	\$37	\$20	\$40
V13 PARKED IN A HANDICAPPED ZONE	\$110	\$150	\$200	\$250	\$50	\$250	\$300	\$187	\$250	\$250
V14 PARKED IN A TOW-AWAY ZONE	\$40	\$25	\$25	\$50	\$25	\$25	\$40	\$33	\$50	\$50
V16 OVERTIME IN LOADING ZONE	\$40	\$25	\$20	\$25	\$25	\$20	\$30	\$26	\$20	\$25
V02 PARKED IN NO-PARKING AREA	\$40	\$25	\$25	\$50	\$25	\$30	\$40	\$34	\$30	\$35
V05 PARKED WITH NO PERMIT	\$40	\$25	\$20	\$100	\$25	\$35	\$30	\$39	\$50	\$50
V09 PARKED IN RESERVED SPACE/Lot	\$40		\$25	\$75	\$25	\$35	\$30	\$38	\$60	\$60
V11 PARKED IN A FIRE ZONE	\$110	\$50	\$50	\$50	\$50	\$30	\$150	\$70	\$60	\$70
V12 PARKED BY A FIRE HYDRANT	\$110	\$50	\$50	\$50	\$50	\$30	\$150	\$70	\$60	\$70
V17 TOWABLE OFFENSE; OR 4 OR Mor	\$85	\$100					\$75	\$87	\$80	\$90
C4 Use of Altered/Stolen/Lost Permit	\$110	\$150	\$200	\$100	\$100	\$250		\$152	\$100	\$150

TAMU offers a \$10 reduction on all citation fine if paid within 14 days.

## 2012-2013 PROPOSED PARKING PLAN

## UNIVERSITY OF HOUSTON

## Parking and Transportation Services

## Proposed Parking Permit Rates

FACULTY/STAFF	FY2012		FY2013	
	Rate	Increase	Rate	Increase
<b>Economy</b>	\$72	\$9	\$86	\$14
<b>Economy Plus</b>	\$107	\$14	\$128	\$21
<b>Covered</b>	\$755	\$126	\$906	\$151
<b>Reserved</b>	\$540	\$90	\$648	\$108
<b>Gated Annual</b>	\$361	\$47	\$433	\$72
<b>Gated Semester</b>	\$216	\$28	\$260	\$43
<b>Ungated Annual</b>	\$202	\$22	\$242	\$40
<b>Ungated Semester</b>	\$121	\$13	\$145	\$24
<b>Garage Annual</b>	\$512	\$38	\$573	\$61
<b>Garage Semester</b>	\$308	\$23	\$345	\$37

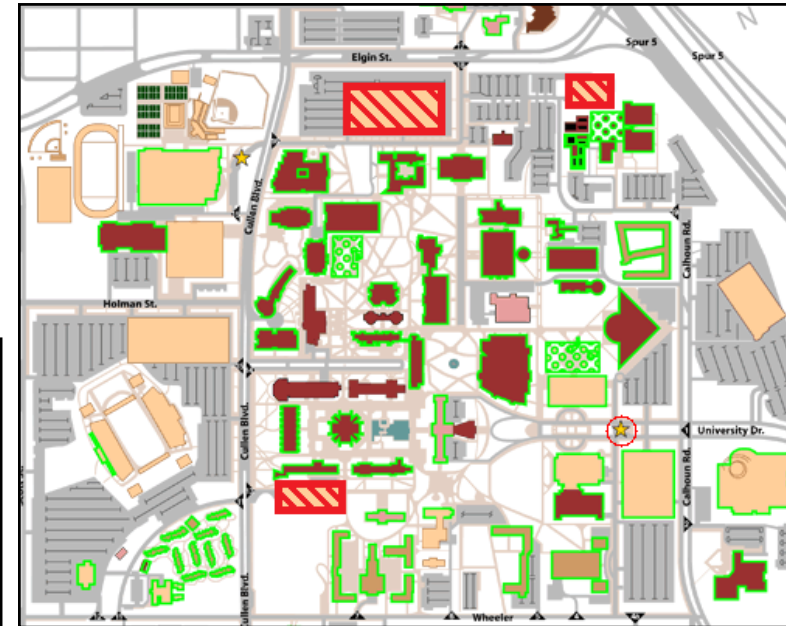
STUDENTS	FY2012		FY2013	
	Rate	Increase	Rate	Increase
<b>Economy</b>	\$72	\$9	\$86	\$14
<b>Economy Plus</b>	\$107	\$17	\$128	\$21
<b>RHE Annual</b>	\$301	\$86	\$361	\$60
<b>RHE Semester</b>	\$179	\$51	\$215	\$36
<b>Annual</b>	\$196	\$30	\$235	\$39
<b>Semester</b>	\$117	\$18	\$141	\$23
<b>Summer Permit</b>	\$46	\$6	\$55	\$9
<b>Handicap</b>	\$178	\$23	\$214	\$36
<b>Garage Annual</b>	\$322	\$58	\$403	\$81
<b>Garage Semester</b>	\$193	\$35	\$241	\$48

# TIMELINE FOR DEVELOPMENT OF FISCAL YEARS 2012 AND 2013 BIENNIUM PARKING PLAN

- 09/17/2010 - Introduce charge to TPAC
- 09 – 11/2010 - TPAC develops 2012-2013 biennium parking plan proposal by holding public workshops, special sessions, and “Pizza with Parking”
- December 3, 2010 – Open Town Hall to present final proposal to UH Community and TPAC vote on biennium parking plan
- December 2010 – Final TPAC proposal presented to Executive Vice President for Administration and Finance Carl Carlucci
- January Meetings – present final TPAC proposal to Faculty Senate, Staff Council, and SGA
- January 2011 – TPAC’s recommendation sent to A&F Finance Department for inclusion into February’s Board of Regents Agenda

# PARKING PLAN HIGHLIGHTS

- 4 Garages Completed by Fall 2015
  - 1 General Use Garage – 15D
  - 1 Faculty/Staff Garage – 13A
  - 1 General Use – 18A
  - 1 General Use Garage – Location TBD

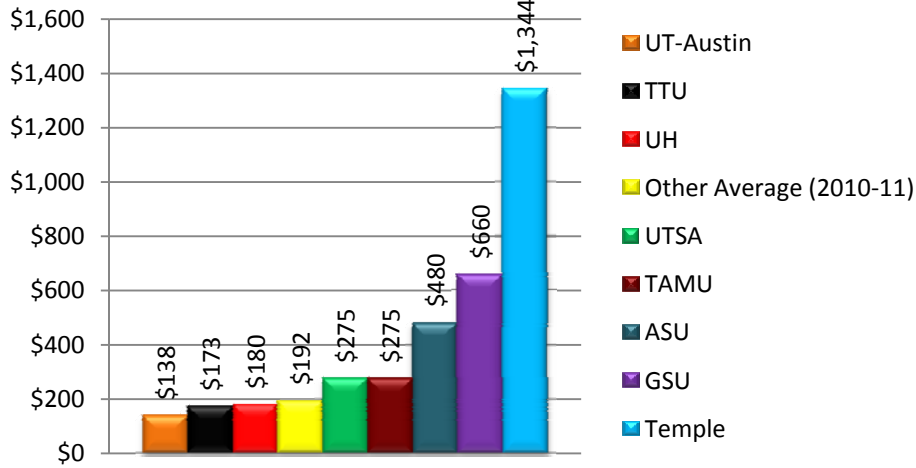


- Over 3,000 New Spaces; 950 are Economy
- Reduced Customer Complaints
- Improved Visitor/Special Event Parking

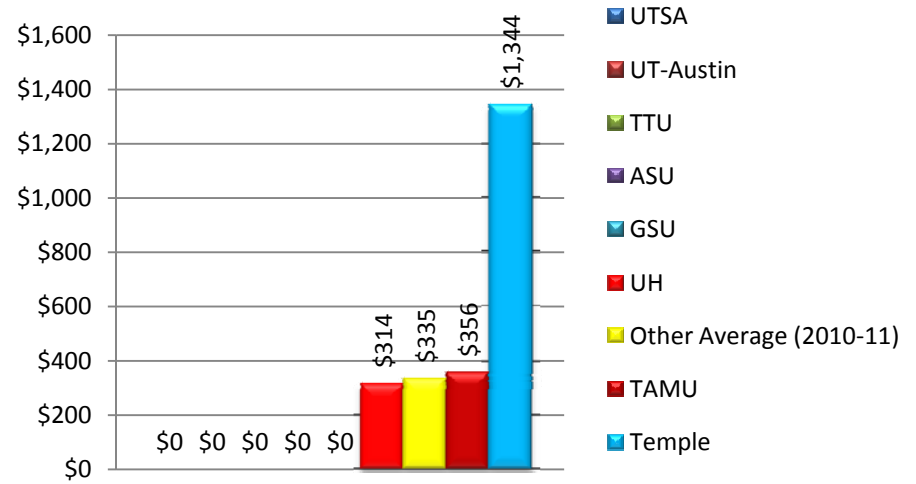
# BUDGET FRIENDLY OPTIONS

- ERP
  - Open lot available at economy permit rate
  - Connected to main campus by Cougar Line
  - \$6/month
  
- METRO
  - Riders on local routes pay on average \$63/month
    - Fuel cost for local commuters averages at least \$84/month
    - 2010 Ungated F/S permit: \$180, or \$15/month
    - Potential annualized savings of over \$400
  - Average Park and Ride fare is \$147/month
    - 1 tank of gas/week for suburban commuters average at least \$168/month
    - 2010 Ungated F/S permit: \$180, or \$15/month
    - Potential Annualized Savings of over \$430
  
- Commuter Club
  - Possibility for pre-tax payroll deductions could create tangible savings
  - PTS as a ride-sponsor, could subsidize some of the cost of mass-transit
  - Completely eliminate the need for a parking permit

### F/S Ungated

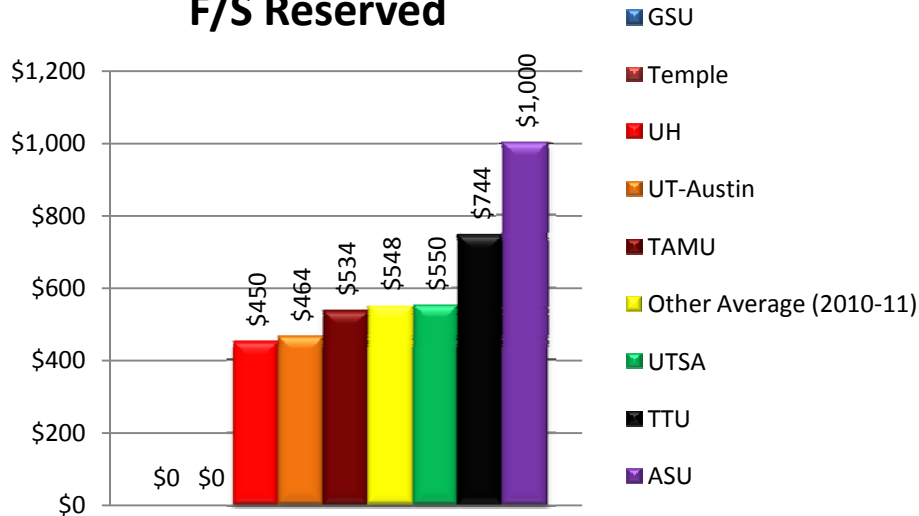


### F/S Gated

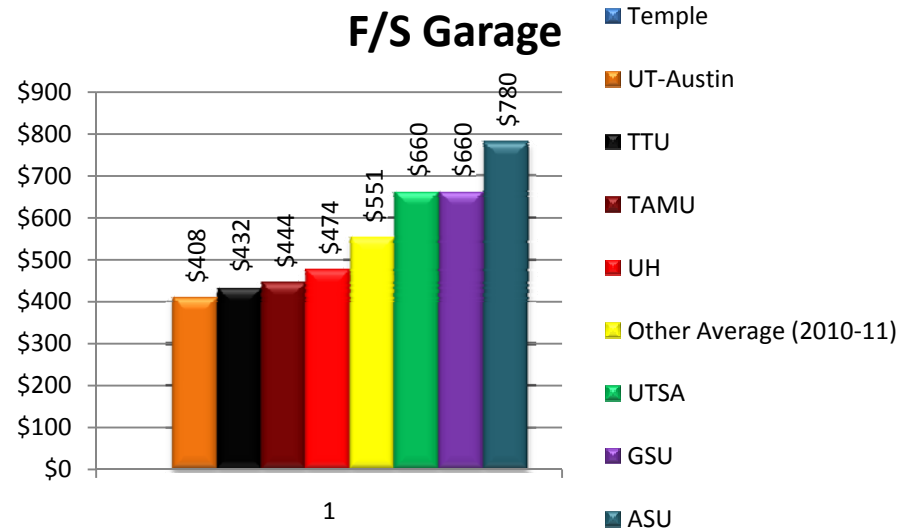


## 2010-2011 Parking Rate Comparisons

### F/S Reserved

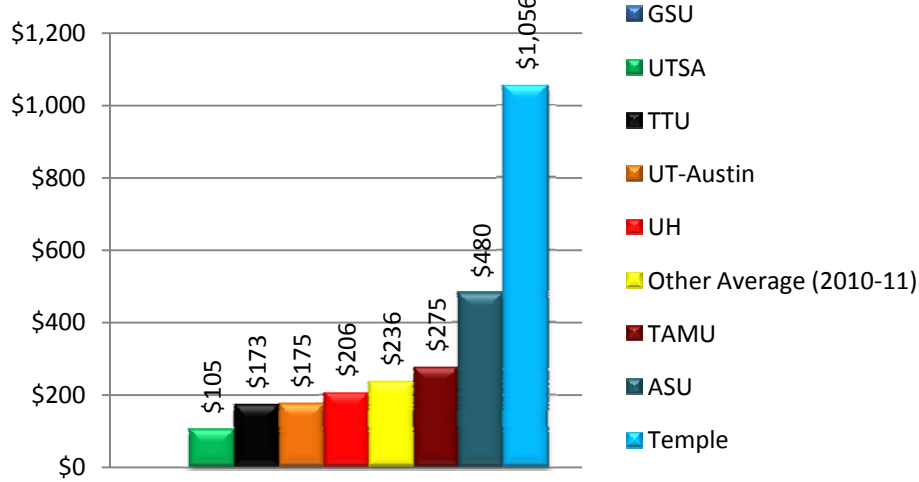


### F/S Garage

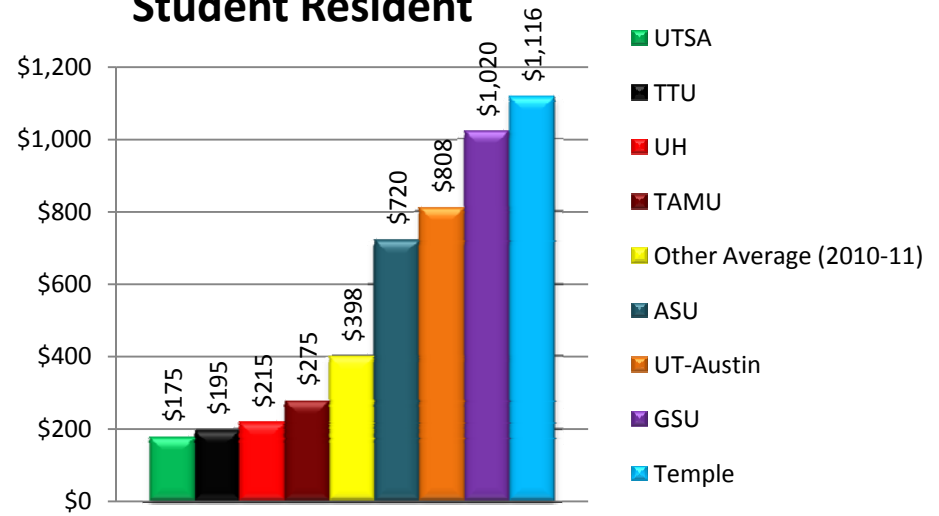


Rates over \$1,000 not used in average calculations

### Student Commuter

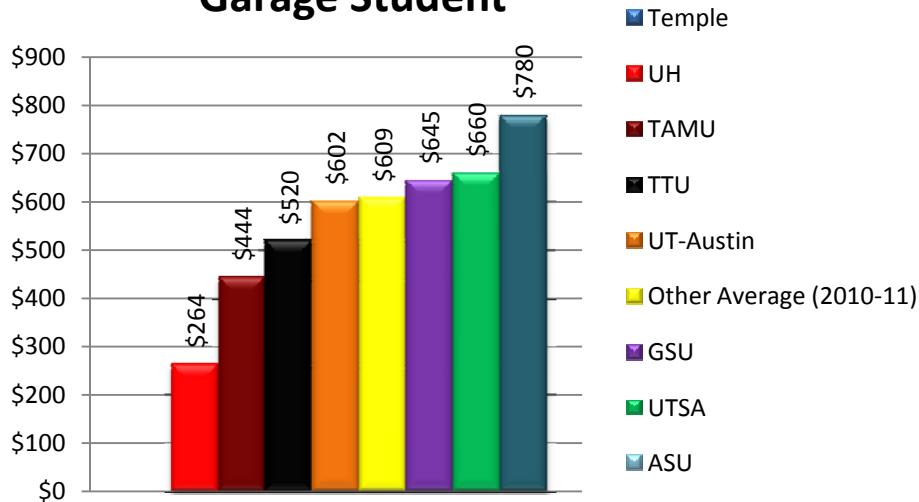


### Student Resident

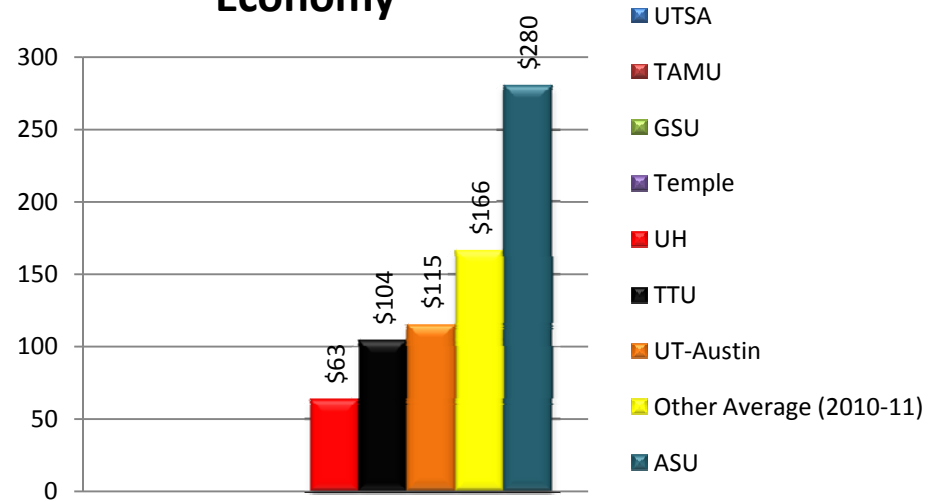


## 2010-2011 Parking Rate Comparisons

### Garage Student



### Economy



Rates over \$1,000 not used in average calculations