

Thinking about the 2020 Elections: Where are we Headed?

**Professor Daron Shaw
University of Texas at Austin**

**Presentation prepared for the Triple Play Conference
at the University of Houston
December 2018**

2018: An Interesting Election

2018: An Interesting Election

- More than 605 years of Republican seniority retired, passed away, or were defeated in the 115th Congress.
- Only 41 U.S. Senators in the next Congress will have served prior to the 2010 midterm elections.
- Only 155 members of the House of Representatives in the next Congress will have served prior to the 2010 midterm elections.
- This turnover will likely continue in the 2020 cycle, when 12 of the 34 senators up for re-election will be 70 years or older.
- More women than ever before were nominated and elected to public office. At least 100 women will be sworn into the 116th Congress, a record. The next Congress is likely to be the most racially and gender diverse in history.

2018: An Interesting Election

- Democrats pick-up 39 seats (and counting), including three in southern California, two in southern Florida, two in Michigan, and four in Pennsylvania.
- With seven pick-ups, Democrats won the most governors' mansions since 1982, including Midwestern states won by Trump: Kansas, Michigan, and Wisconsin.
- The Republicans pick-up two seats in the Senate, flipping North Dakota, Indiana, Florida, and Missouri, but losing Arizona and Nevada.

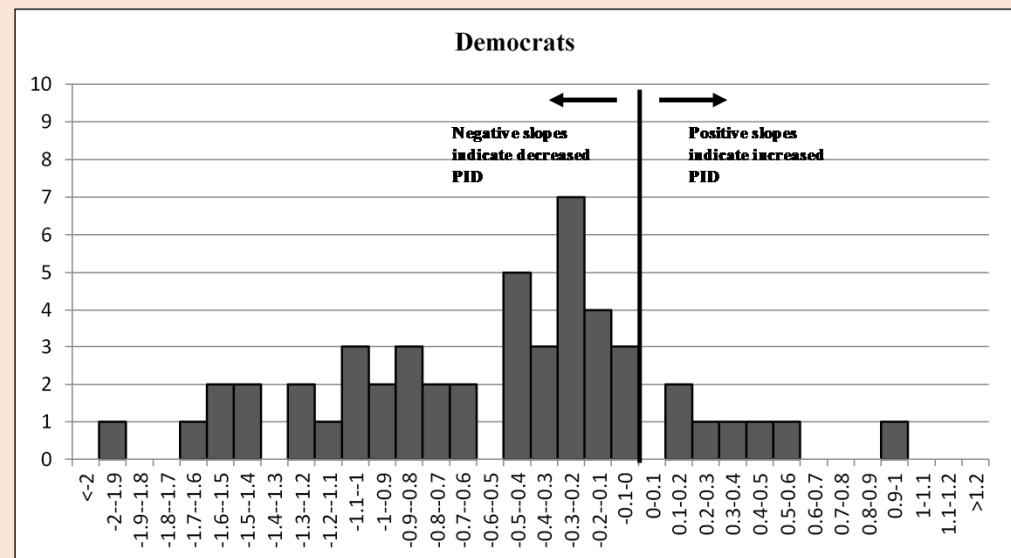
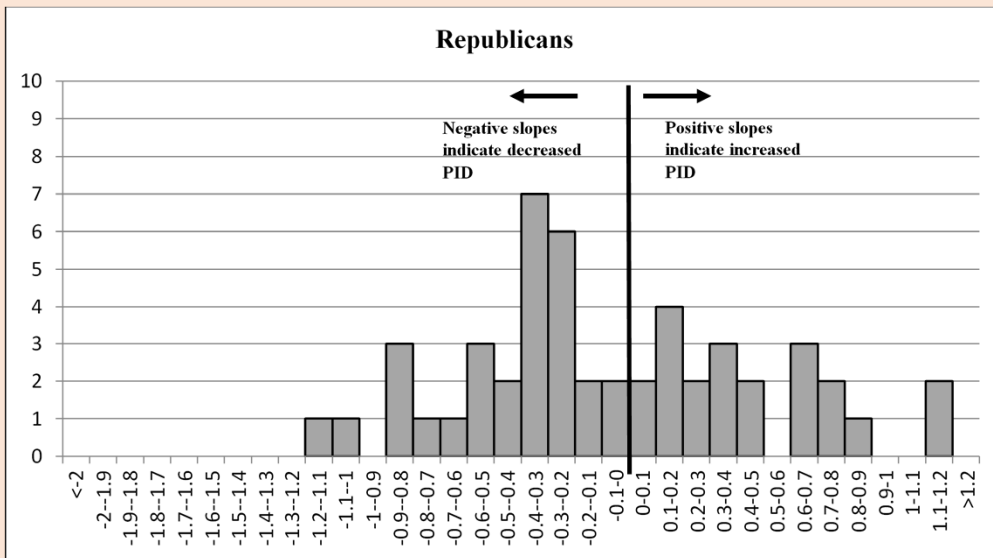
Realignment?

Shifts in the Party Coalitions

	Democrats			Republicans		
	1950s	1980s	2010s	1950s	1980s	2010s
White Northern Protestants	18%	18%	19%	51%	34%	26%
Catholics	14	15	13	10	17	17
Northern Union Households	22	17	15	15	14	15
White Southerners	31	21	14	16	26	31
Jews	4	4	4	1	1	1
Blacks	9	18	20	5	3	2
Hispanics	1	6	12	0	3	6
All others	2	4	4	2	4	2

Shifts in Macro-Partisanship

Slope estimates from regressions of statewide party identification from 1990-2016

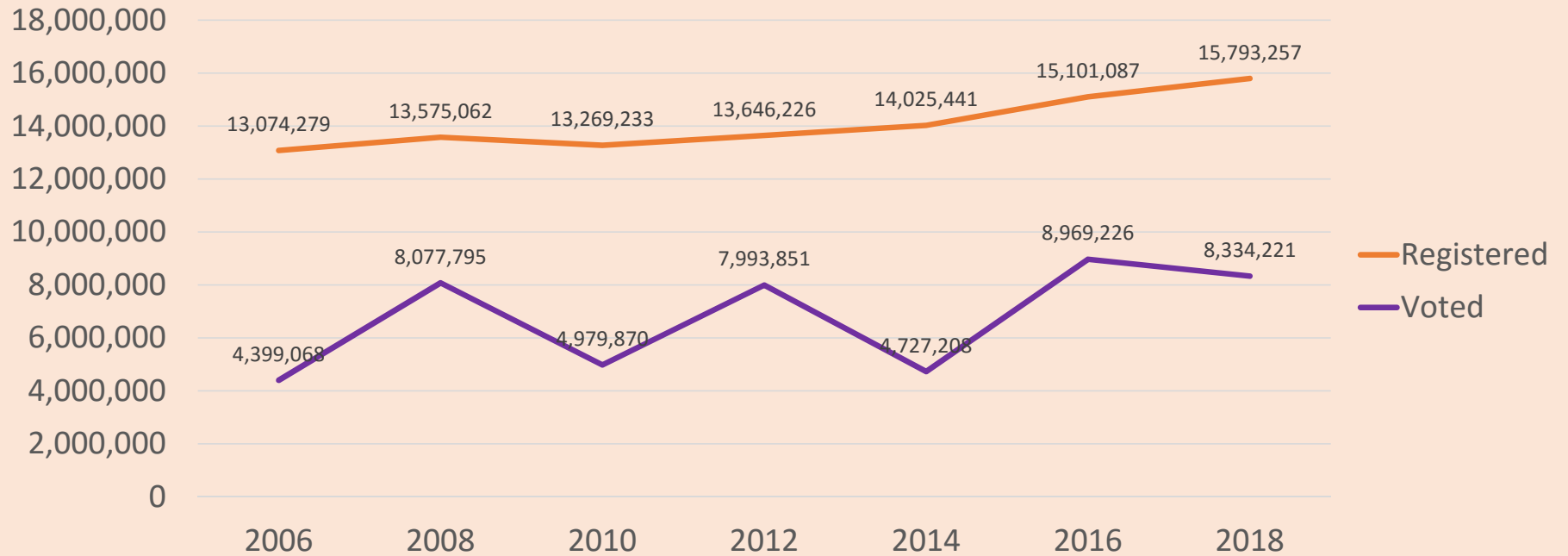


Shifts in Macro-Partisanship

	Moved to Republicans	Stable Republican	Balanced	Stable Democratic	Moved to Democrats
Competitive	Arkansas	Arizona	Colorado	Michigan	
	Kentucky	Indiana	Florida	Minnesota	
	Louisiana	Kansas	Georgia	Oregon	
	Mississippi		Iowa	Pennsylvania	
	Missouri		Maine		
	Oklahoma		Nevada		
	Tennessee		N. Hampshire		
	Texas		N. Carolina		
	W. Virginia		Ohio		
		Virginia			
Non-Competitive	Alabama	Nebraska		D.C.	California
	Alaska	Utah		Hawaii	Connecticut
	Idaho	Wyoming		Maryland	Delaware
	Montana			Massachusetts	Illinois
	N. Dakota			New Mexico	New Jersey
	S. Carolina			Rhode Island	New York
	S. Dakota			Washington	Vermont

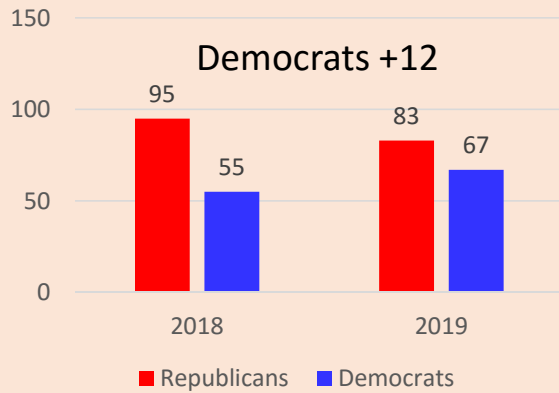
Realignment: Texas Style

Texas Registration and Voting

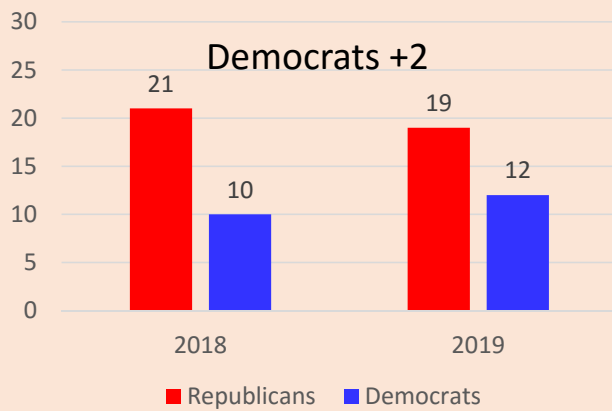


Realignment: Texas Style

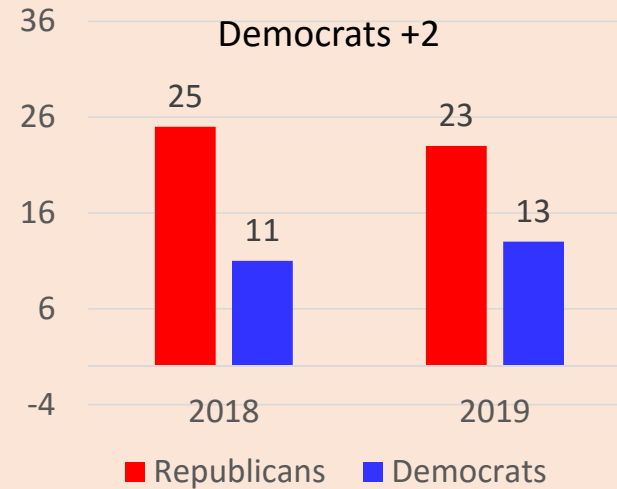
Texas House Delegation



Texas Senate Delegation



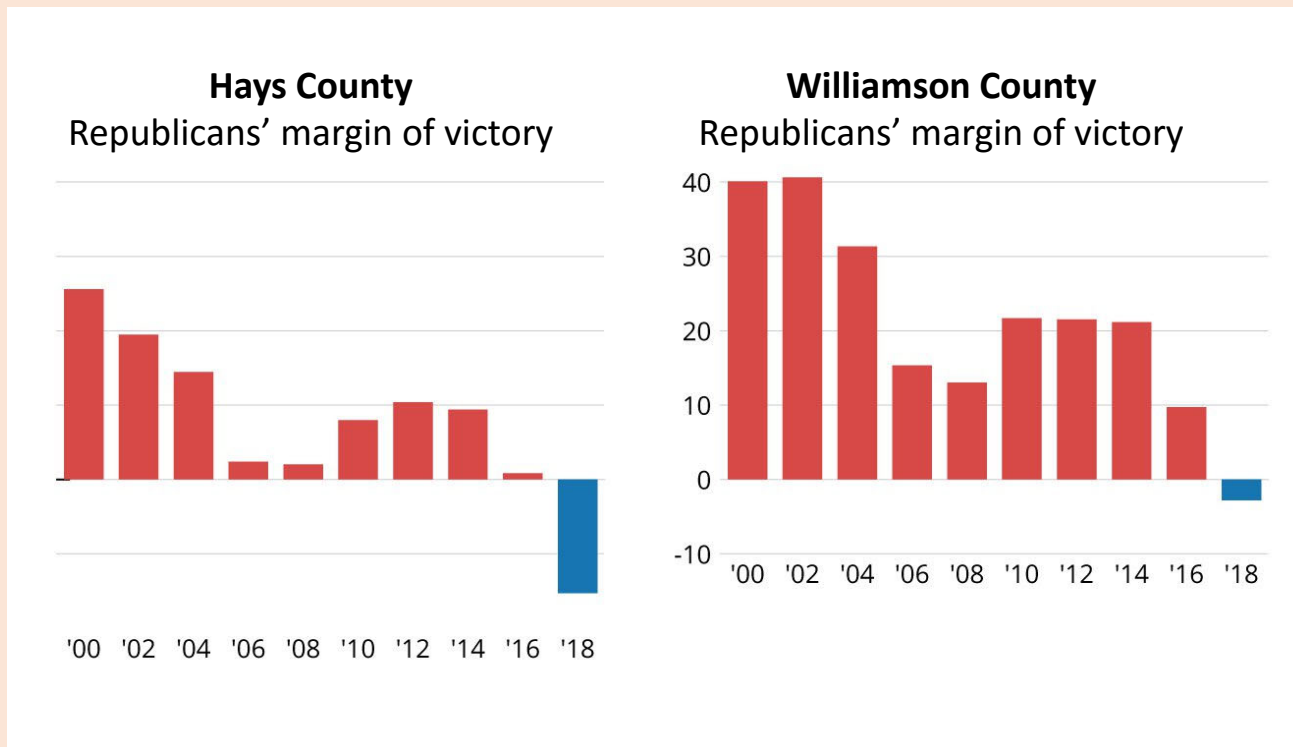
U.S. House Delegation



Silvia Garcia and Veronica Escobar:
First Latinas to Congress from TX

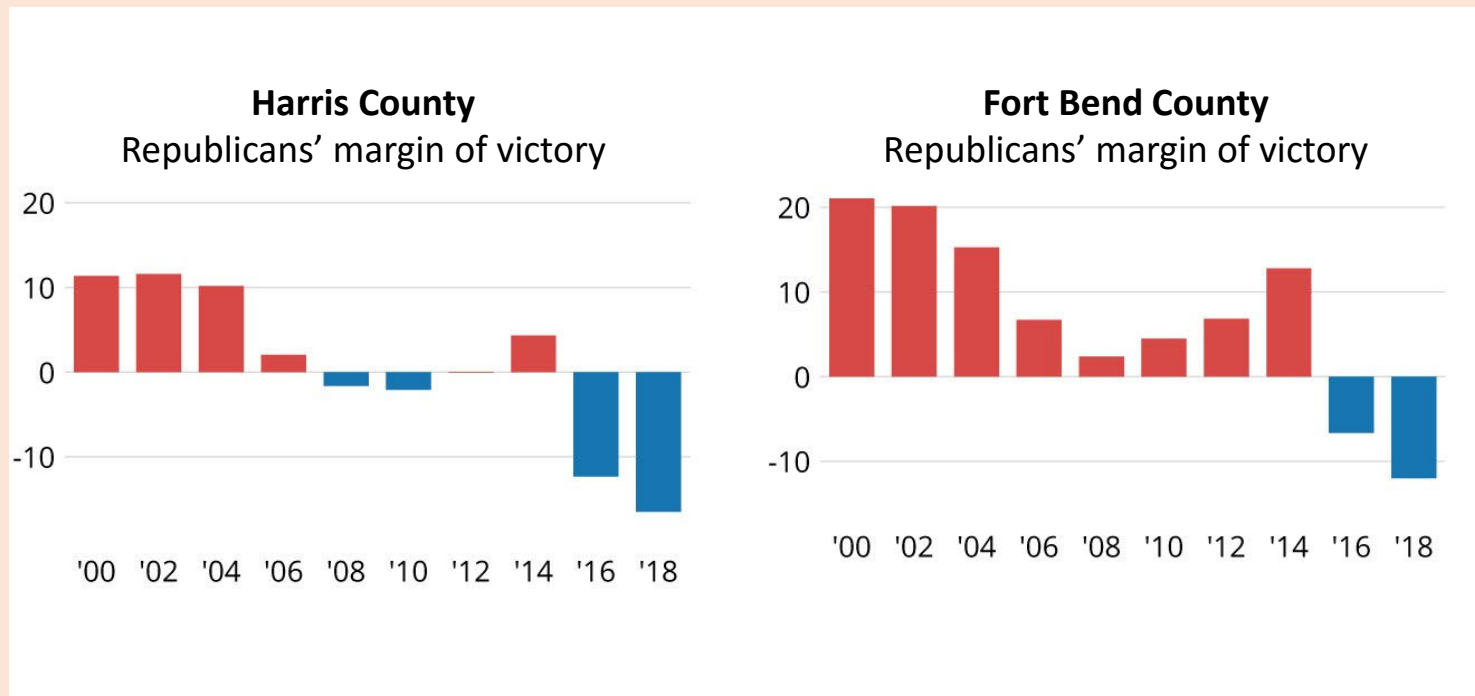
Realignment: Texas Style

Fast-Growing Central Texas Suburban Counties Flipped to Democrats



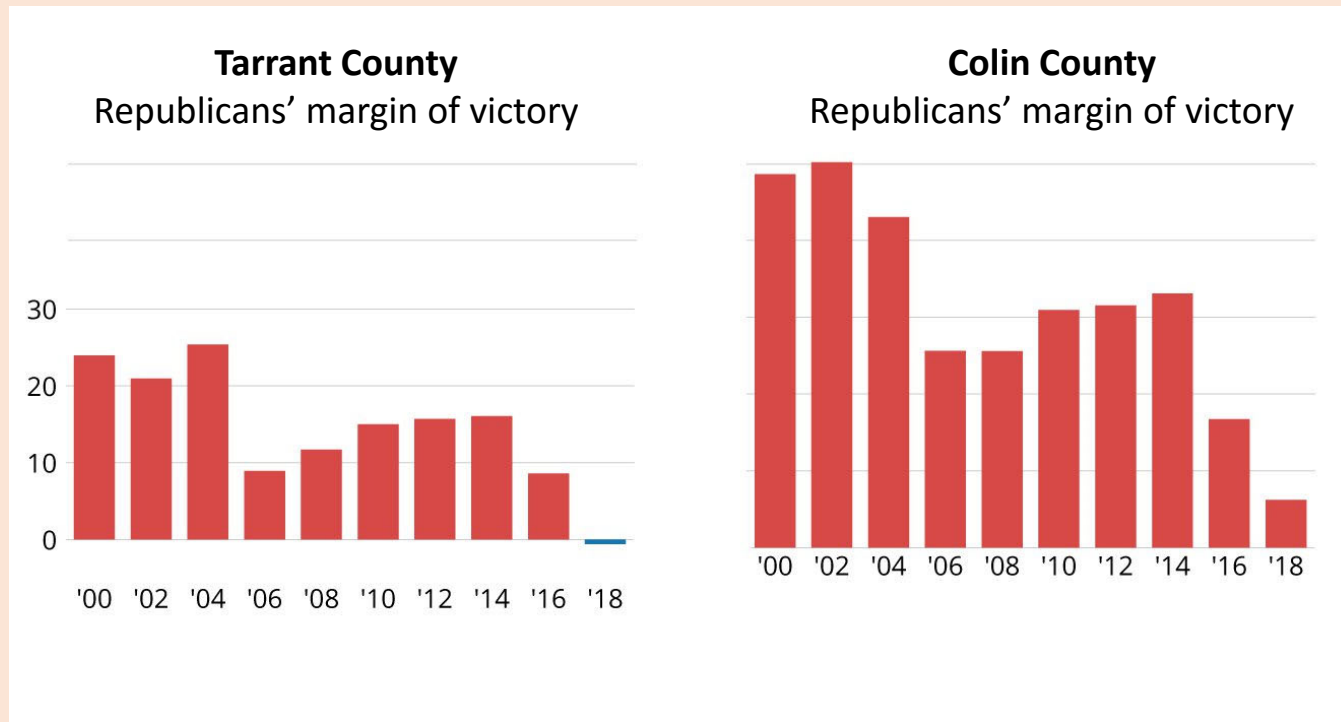
Realignment: Texas Style

Harris County and its largest suburb are now solidly blue



Realignment: Texas Style

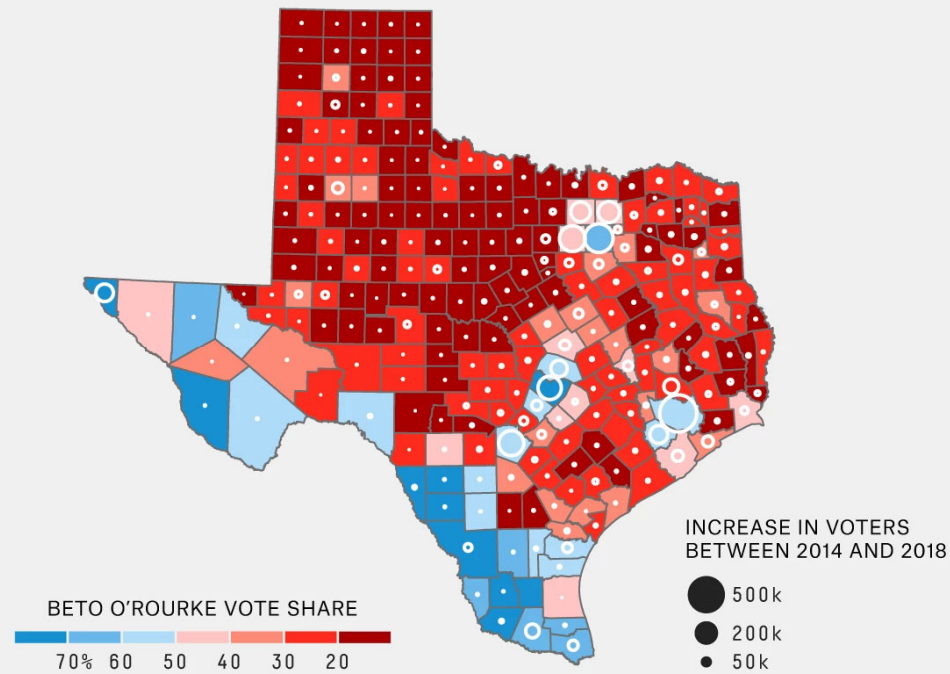
In North Texas, Democrats cut into Republicans' control



Realignment: Texas Style

TURNOUT SPIKED IN DEMOCRATIC-LEANING AREAS

The counties with the largest increase in number of voters versus 2014



Counties where O'Rourke did not win a majority of votes appear on the red side of the color range, regardless of whether he won a plurality of votes.

FiveThirtyEight/Kirk Goldsberry

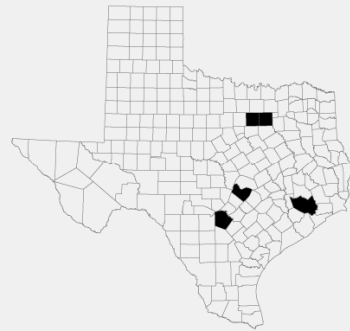
SOURCE: TEXAS SECRETARY OF STATE

Realignment: Texas Style

CRUZ WON BY CARRYING RURAL AREAS

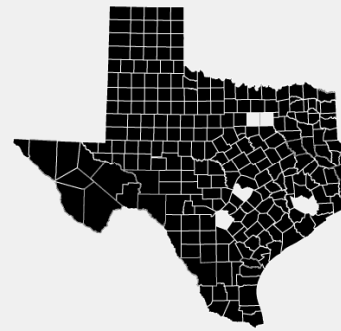
More than half of O'Rourke's Senate votes came from 5 urban counties

THE 5 BIGGEST COUNTIES:
43% OF VOTERS



O'ROURKE: 60.6%
CRUZ: 38.6%
O'ROURKE MARGIN: +789,063

THE OTHER 249 COUNTIES:
57% OF VOTERS

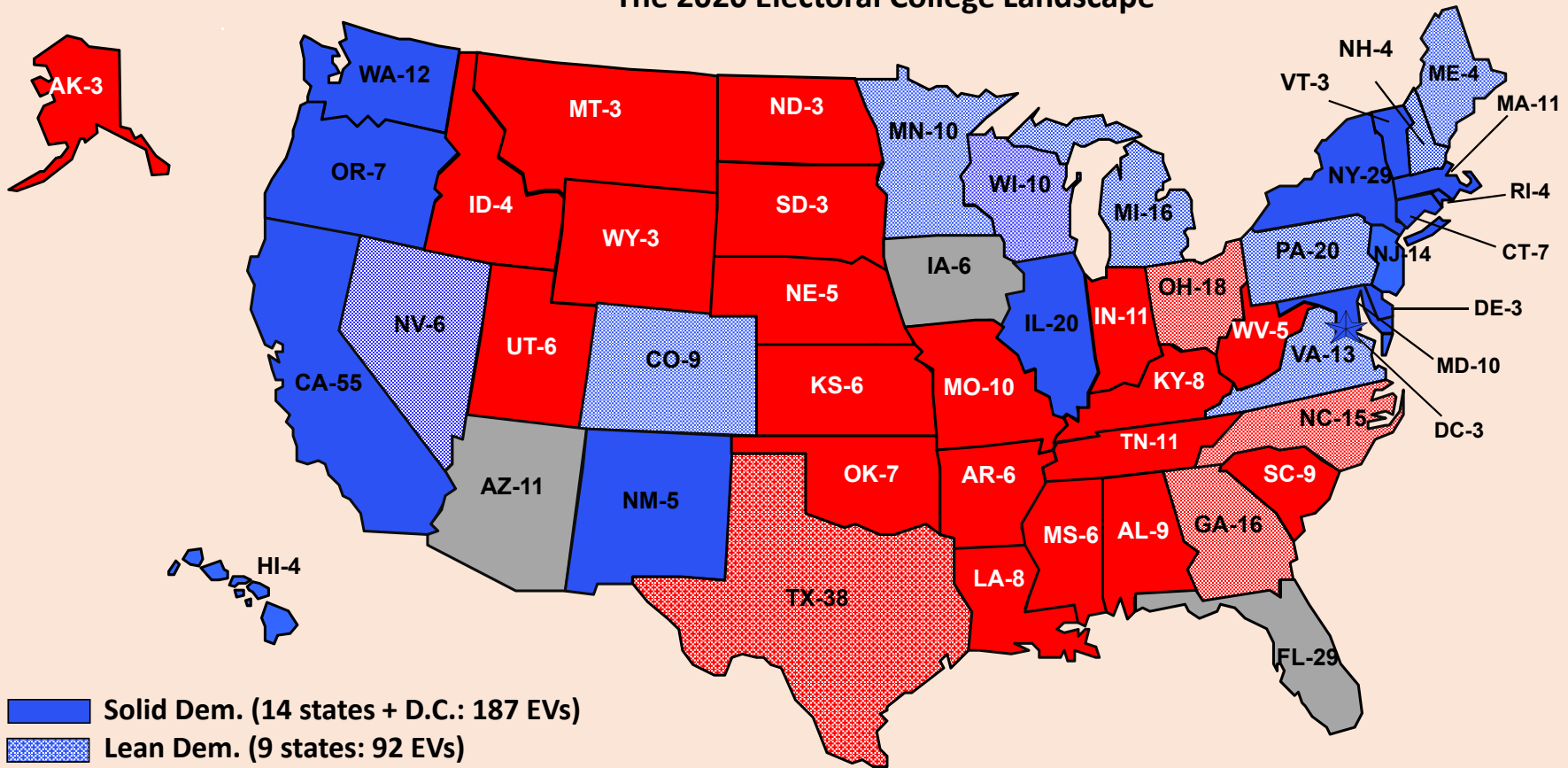


O'ROURKE: 39.0%
CRUZ: 60.2%
CRUZ MARGIN: +1,008,490

Looking Ahead to 2020 and Beyond

2020 Presidential Election

The 2020 Electoral College Landscape



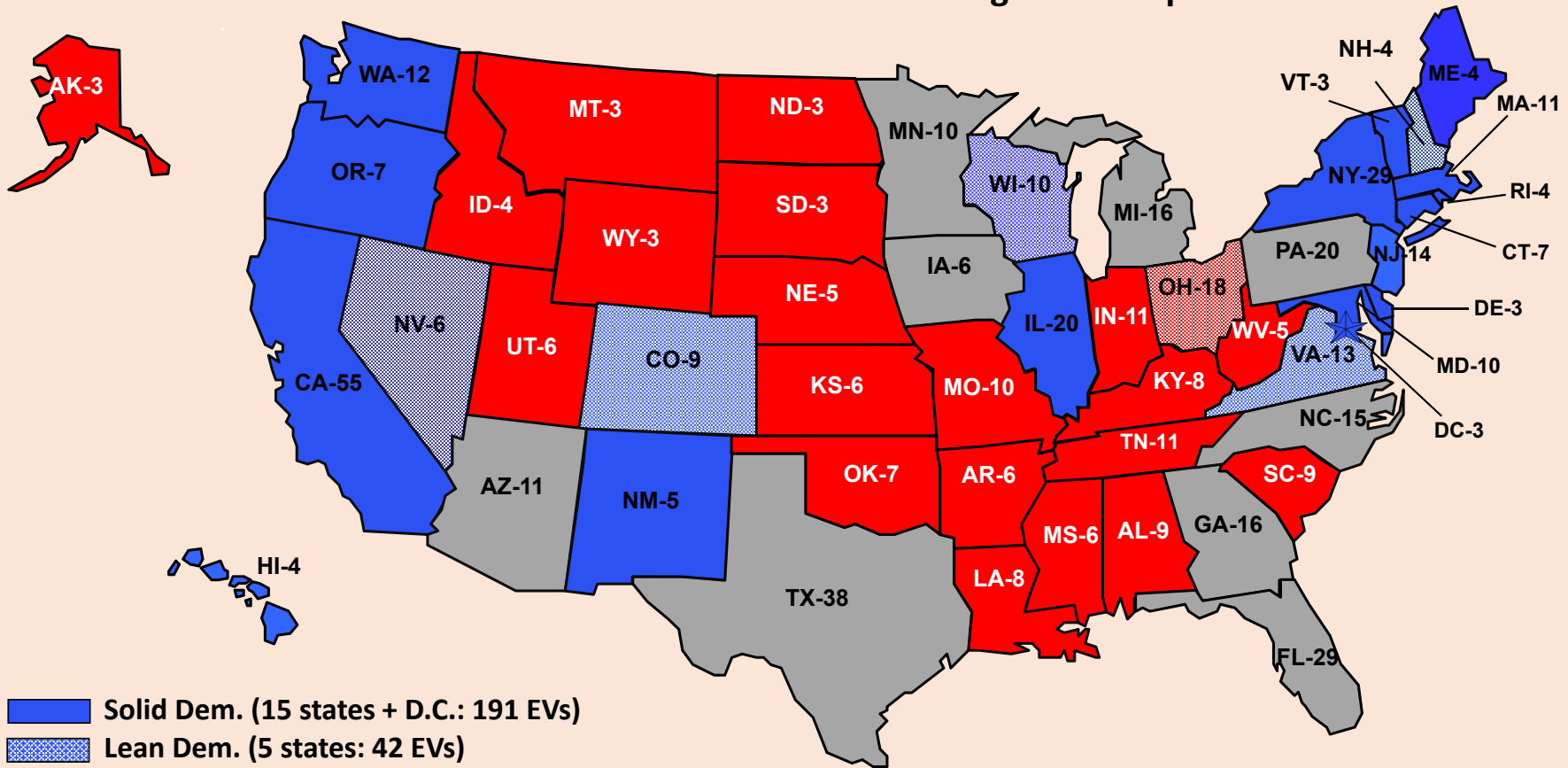
**Democrats start out with
279 “likely” Electoral Votes**

Looking Ahead

It may well be that presidential elections are going to be more competitive in the near future.

2028 Presidential Election?

The 2028 Electoral College Landscape



- Solid Dem. (15 states + D.C.: 191 EVs)
- Lean Dem. (5 states: 42 EVs)
- Toss-Up (9 states: 161 EVs)
- Lean Rep. (1 states: 18 EVs)
- Solid Rep. (20 states: 126 EVs)