



Division of Administration and Finance
University Services

Press Release

FOR IMMEDIATE RELEASE

Ruth Hulett
Administrative Assistant
Phone: 713-743-3788
rmhulett@central.uh.edu

SCIENCE & RESEARCH 1(SR1) to (SR2) 1500KW GENERATOR

Houston, Texas, August 8, 2011- On Friday, August 19th, 2011, the Generator Area which is located on the Southeast corner of the SR-2 Building is scheduled to commence work on Friday, August 19th, 2011 with the erection of the fencing for this work. Construction will begin the following week with duct bank work required to power the temporary generator. This work will create several sidewalk closures for the construction between SR1 and SR2 Buildings.

Satterfield & Pontikes Construction will be closing a portion of the sidewalks between SR1 and SR2, north and west of SR1 and south and west of SR2. A construction fence will be installed on August 19th, 2011 thru December 19th, 2011.

Please refer to the attached drawing for affected areas. The lines indicated in Red are the construction fence of the construction zones.

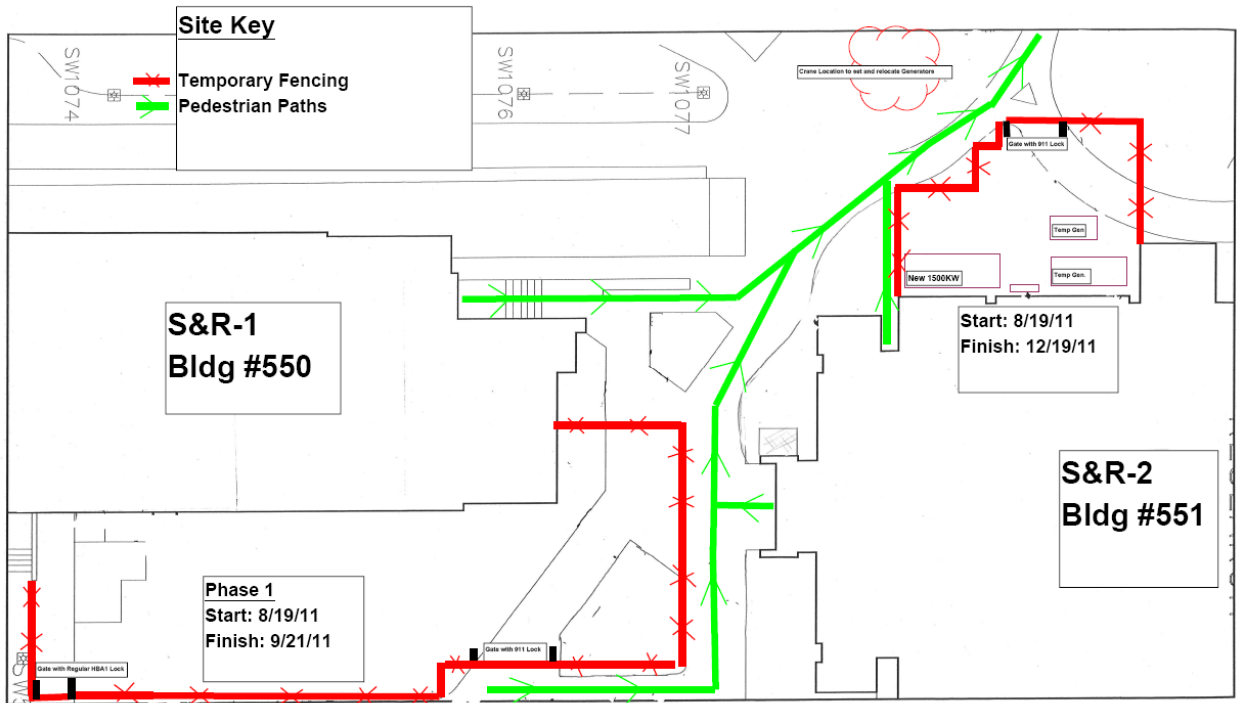
The Lines indicated in Green are sidewalks that will remain open for pedestrian traffic, during the construction period.

The construction will begin August 19th, 2011, and is expected to be completed by December 19th, 2012.

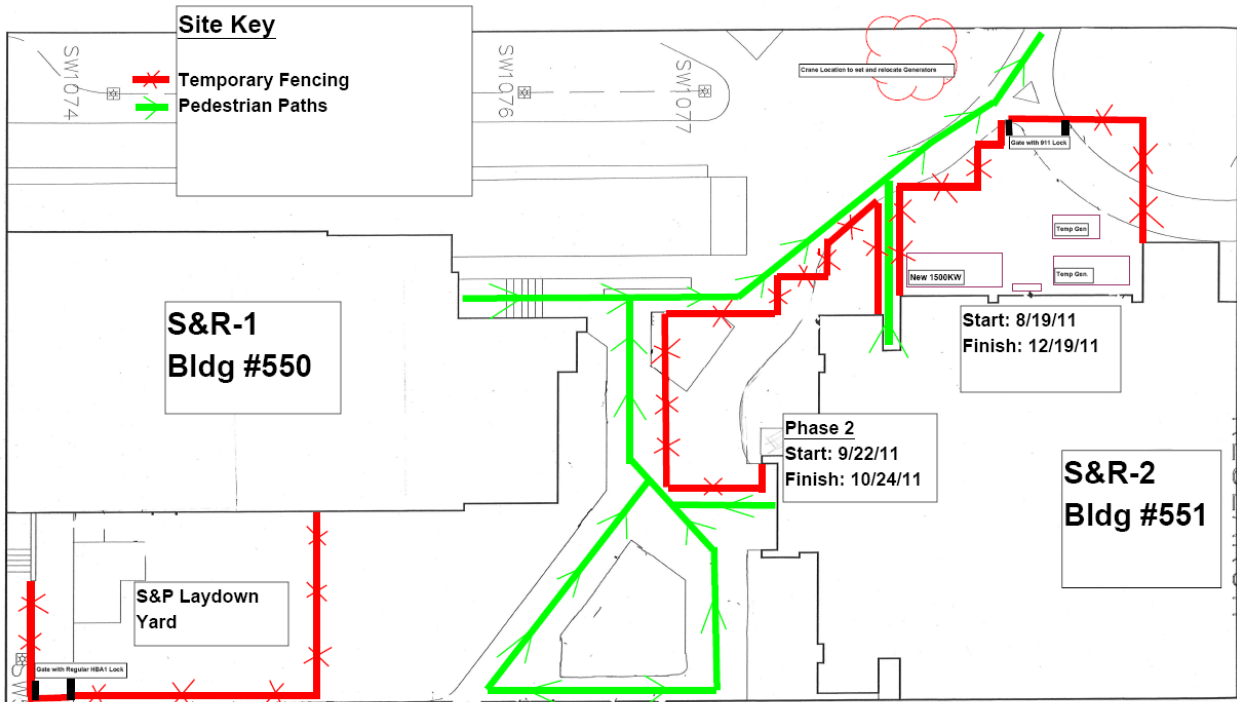
Please contact Morris Bennett, Project Manager, if you have questions related to this project mlbenne2@central.uh.edu or by phone at 713-743-2535.

About the University of Houston

The University of Houston is a comprehensive national research institution serving the globally competitive Houston and Gulf Coast Region by providing world-class faculty, experiential learning and strategic industry partnerships. UH serves more than 38,500 students in the nation's fourth-largest city, located in the most ethnically and culturally diverse region of the country.



Construction Site Plan for Phase 1



Construction Site Plan for Phase 2