

Does “*in utero*” Exposure to Illness Matter? The 1918 Influenza Epidemic in Taiwan as a Natural Experiment

Ming-Jen Lin*
National Taiwan University

Elaine M. Liu
University of Houston

September, 2012

Abstract

This paper uses the 1918 influenza pandemic in Taiwan as a natural experiment to test whether *in utero* conditions affect long run developmental outcomes. Combining several historical and contemporaneous datasets, we find that cohorts *in utero* during the pandemic are less educated, shorter as teenagers, and more likely to have kidney disease, glaucoma, respiratory problems and diabetes in old age than other birth cohorts. Despite the possible positive selection on health with the high infant mortality rates during this period (18%), our findings suggest a strong negative effect of *in utero* exposure to influenza.

Key Words: 1918 influenza, Fetal origins hypothesis, Height, Education, Disease and mortality

JEL Code: I12, N35, I19

* Contacting Author. Email: mjlin@ntu.edu.tw. We thank Jerome Adda, Josh Angrist, Alan Barreca, Ken Chay, Aimee Chin, Seema Jayachandran, Ted Miguel, Tom Vogl, Ted Joyce and conference participants at NBER-SI Health Economics Session, PacDev and Academic Sinica for their helpful comments and suggestions. Financial support from National Science Council, Taiwan (NSC99-2410-02-250-MY2) is appreciated. We thank Jason Chien-Yu Lai for his excellent research assistance.

The fetal origins hypothesis proposed by Barker in 1992 posits that “certain chronic conditions later in life can be traced to the course of fetal development.” There is some evidence in medical literature suggesting that poor fetal conditions can increase the risk of schizophrenia (Brown et. al. 2004), cardiovascular disease and hypertension (Barker 1990, 1998; Langley- Evans 2001). However, it is not an easy task to establish a causal link between *in utero* environment and the long-term outcome. For example, there could be unobserved characteristics of mothers or families associated with the poor *in utero* environment, and these unobserved characteristics can have an impact on one’s long-term outcomes as well. To tackle this identification issue, Almond (2006) investigates the long-term impact of the 1918 influenza pandemic in the US. The sudden, unexpected and brief nature of the 1918 influenza pandemic sets up a natural experiment to test the fetal origin hypothesis. He compares the affected cohort, i.e., those who experience the influenza *in utero* (born in 1919), to adjacent cohorts: those who were born just before or just after the 1918 influenza. He shows that cohorts *in utero* during the peak of the influenza pandemic exhibited lower educational attainment, lower income, lower socioeconomic status, a higher physical disability rate, and higher welfare income compared with those born just before or after.¹ He also uses maternal mortality rates as a proxy for the severity of pandemic and finds that those who were born in more highly affected areas are less educated.

Building on Almond’s work, this paper employs a similar empirical strategy but with Taiwanese datasets. It was estimated that nearly 770,000 people (1/5 of the total population) contracted the influenza strain, and influenza had a mortality toll of about 25,000 people in 1918 in Taiwan (Ding, 2008). Taiwan was a colony of Japan between 1889 and 1945, and the Japanese colonial government compiled detailed regional-level and aggregate-level dataset including pandemic severity, mortality, and government expenditure on public health and education. We use the 1980 Census and the 1989 Survey of Health and Living Status of the Elderly to examine outcomes such as educational attainment and long term health

¹ Using the Survey of Income and Program Participation (SIPP), Almond and Mazumder (2005) also found that the cohort exposed to influenza *in utero* had poor general health as well as trouble hearing, speaking, lifting, and walking, and higher rates of diabetes and stroke.

problems. Besides these recent datasets, we find some aggregate height information compiled by birth-year and region between 1929 and 1938. These historic aggregate datasets allow us to provide a snapshot of the health of pandemic birth cohorts as teenagers.

We are making a few contributions to the literature in the following ways:

1. The challenge to Almond's work has been recently raised by Brown (2011), regarding the US involvement in World War I (July 1914-Nov 1918). Using the 1920 and 1930 US censuses, Brown (2011) find that parents of the 1919 birth cohort are less educated, of lower socioeconomic status and older than the parents of surrounding cohorts. In Almond's work, since parents' characteristics were not controlled for, the time series estimates of coefficient on 1919 could overstate the true effect of the pandemic.² In contrast, as a Japanese colony, Taiwan has no involvement in WWI.³ Given the abundance of the dataset, we can further check whether parental characteristics of pandemic birth cohorts are any different from other cohorts, and we do not find any statistical difference in father's education and occupation between the pandemic birth cohorts and their surrounding cohorts.
2. Better identification of treated cohorts. Almond (2006) uses the US census, which did not report birth year, and he has to use one's self-reported age to impute one's birth year. Age-heaping is a known problem in the US census, i.e. those born in 1919 could report age 40 rather than age 41 in the 1960 census, leaving birth year incorrectly identified (Lleras-Muney, 2005). This issue of age heaping could possibly bias the results downward. In the Taiwanese census, birth date is recorded by interviewers who verify one's ID card or *hukou* (household registration), so the age-heaping would not be an issue (Taiwan1980 Census Report).
3. Given the abundance of the dataset, we are able to trace health outcomes over the lifecycle of each birth cohort. Most of the papers in the literature can only examine the long-term health and education

² This issue should not have much impact on the parts of Almond's (2006) findings that are derived from regional variation in pandemic severity.

³ In his book on military mobilization in Taiwan during the colonial period, Chou (1995), an expert on Taiwanese colonial history writes that the Japanese colonial government only began to recruit Taiwanese to serve in the Japanese military in 1937.

effects of in utero exposure to the 1918 flu pandemic.⁴ We utilize the historic dataset from 1927-1939 to provide a snapshot of the birth cohort members' height in pre-teen and teenage years.

4. To the best of our knowledge, among the papers examining fetal origins hypothesis using flu pandemics, only the paper by Neelsen and Stratmann (2012) had controlled for region-specific time trends. In our analysis, we show that it is important to control for region-specific time trends, as the main coefficients of interest reduce by half compared with the coefficients when one only controls for region dummies. Our paper provides a more precise measure of the impact of the influenza.

Apart from the advantages of using the Taiwanese dataset, there are a few noteworthy differences between Taiwan and the US. Taiwan has higher infant mortality rates than the US prior to the pandemic (16% versus 9.4%), and Taiwan also has higher infant mortality rates than the US during the pandemic (18.5% versus 10.1%).⁵ The environment in Taiwan is much less salubrious than the US, with the presence of other infectious diseases such as plague, cholera and malaria. Given the high mortality rates during the pandemic,⁶ the surviving pandemic cohorts in Taiwan could be healthier than non-pandemic cohorts if the selection effect dominates over the scarring effect (Bozzoli, Deaton and Quintana-Domeque, 2009).

Taiwan had two waves of life-threatening influenza outbreak between 1918 and 1920 (see Figure 1a). The first wave is from the end of October to December 1918, while the second wave is from December to

⁴ Besides Almond's (2006) work, there are a few other economic papers that also examine the long term impact of the flu pandemic: Neelsen and Stratmann (2012), Nelson (2010), Kelly (2011) and Mazumder et al (2010). Neelsen and Stratmann (2012) use time and regional variation of influenza in Switzerland to examine education and marriage outcomes in Switzerland, and Nelson (2010) uses quarter of birth to identify the exposure to influenza and examine education and wage outcome in Brazil. Kelly (2011) uses regional variation in influenza severity to examine physical and cognitive development at age 7 and age 11. Mazumder et al (2010) use birth year variation to examine height at young age (for only those who are drafted in the military) and illness at older age. Our analysis consists of two parts—both the time series (one's birth month-year) and birth region to identify the severity of exposure. We trace them throughout the course of their life by examining height as teenager, education and illness after age 65.

⁵ Among works that examine 1918 influenza, i.e. Neelsen and Stratmann (2012) in Switzerland, Nelson (2010) in Brazil, Mazumder et al (2010) and Almond (2006) in the US, Taiwan is the worst economic condition and disease environment of all. For example if we compare education of the cohorts born during this period, Switzerland has 17.5% and US has about 22% completed high school and beyond when Taiwan only has 6.5%. Brazil has 5.5% of this cohort that had completed college education when only 1.5% of the Taiwanese cohorts have complete college.

⁶ According to Tsai (2005), the mortality rate conditional on influenza infection is 3.3% in Taiwan in 1919 and it is higher than 2.5% in the US and 1.21% in Japan.

February 1920.⁷ One might worry that since the influenza pandemic occurred in other parts of the world during the spring of 1918, could the outbreak in Taiwan have been anticipated? In this regard, we provide several pieces of evidence. First, the articles and newspapers we surveyed suggest that the severity and extent of the spread of influenza in October/November 1918 was a shock to both the colonial Japanese government and the media. In fact, Ding (2008) specifically suggests the Japanese colonial government was slow to react to the influenza and contain the flu outbreak in the crucial period because the government did not anticipate this to be a severe pandemic. Second, it is possible that some residents, such as Japanese residents or civil servants, may be better informed about the threat of influenza than the rest of the population. If better-informed parents systematically avoided pregnancy during this period, we could have an overestimate of the true impact of the pandemic. Using the birth data collected by the Japanese Colonial government, we compare birth rates and birth frequencies by father's residency⁸ and field of employment between the pandemic cohorts and surrounding cohorts and we do not find any difference.⁹ If one still worries that the second wave of influenza could be expected, we further exclude 1920 birth cohort from our analysis in the robustness check and the results remain robust.

Another concern is that the spread of the pandemic could be correlated with other factors, e.g. poor sanitation and poor economic development in an area, which could be predictive of later life health and human capital outcomes. The spread of influenza in Taiwan was believed to start in a northern port city and spread along the railroad in less than two weeks. Thus, regions with higher influenza-related mortality are in fact those regions with higher income, higher spending on education/sanitation infrastructure both in 1918 as well as in later years.¹⁰ This positive relationship could bias our estimates

⁷ There is only one scholar, Ding (2008), who suggests that influenza struck Taiwan three times: June 1918 to September 1918, late October 1918 to December 1918, and December 1919 to February 1920. However, the only news we can find related to the first wave was on July 7, 1918 by *Taiwan Daily News*. It reports that there are increasing numbers of outpatients for cold and fever.

⁸ Residency is recorded as either mainlander (Japanese) or local (Taiwanese) and field of employment includes Fields of employment include agriculture, transportation, fishery, mining, industry, commercial, government, others, unemployed and housework.

⁹ Results presented in the Web Appendix.

¹⁰ This phenomenon is also known as urban penalty. See Haines (2001) for a discussion of the existence of urban penalty in the US. For brevity, we report the correlation matrix between health/education expenditure and pandemic

downward. In the robustness check section, we control for health and education spending at the regional level and find similar results.

We find that exposure to influenza while *in utero* has a profound adverse effect later in life. In Taiwan, males who were born in 1919 receive 0.06 fewer years (1.2%) of education than the surrounding cohorts; whereas Almond finds that males who were born in 1919 in the US receive 1.4% fewer years of education than the surrounding cohorts. While this effect may seem small, we should remind our readers that the following issues. First, only 1/5 of the total population contracted the influenza and the pandemic was only about 3 months long. Second, given that cohort attrition would tend to reduce estimated effects, if weaker cohort members are less likely to survive until 1980 as a result, then negative effect would be estimated in a positively-selected sample. A back-of-envelope calculation would suggest that 1919 birth cohort is about 3 % smaller than 1918 birth cohort in the 1980 Census. After applying Lee's (2009) bounding method, the coefficient on 1919 would be -0.13 years (as opposed to -0.06 year), which is twice larger than Almond's finding. Lastly, the infant mortality and child mortality rates (~20%) were much higher in Taiwan than in the US during this period. Being able to detect a negative effect of pandemic suggests that scarring effects of pandemic must be really strong to dominate the selection effect. In summary, the negative effect of pandemic is greater compared to the results in Almond (2006).

The trimester that one exposed to influenza does not have differential impact on health. Using the regional-variation in influenza severity, we find that every 1 percentage point increase in maternal mortality rate would reduce the years of schooling by 25% (0.8 year). During the peak of the pandemic, the maternal mortality rate increased by 0.4 percentage points. We also provide evidence that the pandemic has a sizeable negative impact on height. For each 0.4 percentage points increase in maternal mortality rate, height reduced by 2.88 cm (~1.1 inch) or 0.74 standard deviations. Our estimate is bigger than Mazumder et al.'s (2010) estimate on height using U.S. military WWII enlistment records. Most

severity in the Web Appendix posted on the authors' homepage.

importantly, our evidence is consistent with the medical literature's finding that *in utero* influenza can increase the risk of diabetes, circulatory disease, respiratory diseases, and glaucoma (Konje et al. 1996, Langley-Evans 2001), similar to what Almond and Mazumder (2005) find. Given the scarcity of long-run data linkage between *in utero* individuals and their subsequent developmental outcomes many years later, our results shed new light on the validity of the fetal origin hypothesis.

The paper proceeds as follows: Section II is the literature review. Section III describes the impact of the 1918 influenza on Taiwan and the datasets used in the paper. Section IV provides the empirical results, and Section V concludes.

II Literature Review

Research has shown that early life shocks could have long lasting effect on various developmental outcomes into adulthood (Case et al. 2002, 2005; Almond and Currie 2011a).¹¹ For a detailed introduction to this literature, please see Almond and Currie (2011a, 2011b) and Currie and Vogl (2012).

Epidemiologists used to believe that the placenta is a perfect filter, so smoking and drinking for pregnant women are fine in the 1950s (Almond and Currie 2011b). Barker (1992) first formalizes this conjecture by proposing the fetal origins hypothesis, which argues that inadequate *in utero* nutrition could “program” a fetus to prioritize brain growth at the expense of other organs and tissues. As a consequence, certain chronic health conditions such as diabetes, heart problems at old ages can be traced back to the fetal environment. Ozanne and Hales (2004) support this hypothesis by providing an experimental result on mice.¹² Barker et al. (2002) also find that this “thrifty phenotype”, i.e. slow fetal growth followed by fast catch up later, predicts large differences in the cumulative cases of coronary heart disease, type 2

¹¹ These researchers find profound short-run impacts of low birth weight (LBW) such as higher hospital costs and higher infant mortality (Almond et al. 2005, Black et al. 2007, Oreopoulos et al. 2008), and the long-run effects of LBW include lower test scores, below average IQ and education (Conley and Bennett, 2000; Hack et al., 2002; Boardman et al., 2002, Black et al. 2007, Johnson and Schoeni 2007, Oreopoulos et al. 2008, Royer 2009, Lin and Liu 2009). Other effects include lower wages and even shorter height (Behrman and Rosenzweig 2004, Black et al. 2007, Johnson and Schoeni 2011). Twins data or instrumental variables method are used to solve the potential endogeneity problem caused by omitted bias.

¹² They found that the lifespan of experimental mice is considerably shortened if the postnatal period of growth is accelerated to make up for reduced growth *in utero*. In addition, these mice are susceptible to the adverse effects on longevity of an obesity-inducing diet after weaning.

diabetes, and hypertension. There is also epidemic evidence showing that poor early fetal conditions increase the risk of schizophrenia (Brown et al. 2004), kidney disease and high blood pressure (Langley-Evans 2001).

1918 Influenza as a Natural Experiment to Test the Fetal Origins Hypothesis

Overall, the literature uses large and sharp pandemics (e.g. the 1918 and 1957 influenza) as a natural experiment to test the fetal origins hypothesis.¹³ The identification strategies are either to compare the outcome difference between exposure and its surrounding cohorts (Almond 2006, Garthwaite 2009, Nelson 2010), or to use regional variation in influenza severity (Kelly 2011, Neelsen & Stratmann 2012) or in maternal mortality rate to impute the impact on fetus (Almond 2006).

Almond (2006) and Almond and Mazumder (2005) were one of the first to test the fetal origins hypothesis using a natural experiment. The 1918 influenza pandemic was a widespread negative shock that spanned 4 months in the US. Almond (2006) and Almond and Mazumder (2005) compare the outcomes of the cohorts *in utero* during the peak of the influenza pandemic (born in 1919) to the surrounding cohorts. They find that 1919 birth cohort suffered from lower educational attainment, income, and socioeconomic status, as well as higher physical disability rates and higher welfare income as adults, relative to the cohorts born just earlier and later. Almond finds that cohorts born in states with more severe exposure to the influenza pandemic experienced significantly worse outcomes than those born in states with less severe exposure.

Using National Health Interview Survey (NHIS) in the US, Garthwaite (2009) finds that 1918 flu pandemic cohorts, defined by those born in the 4th quarter of 1918, and the 1st and 2nd quarters of 1919, have a higher probability of developing coronary heart disease, diabetes, kidney disorders, or reporting poor health. Nelson (2010) finds similar adverse effects in education and wage for those who were born in

¹³ Barreca (2010) uses exposure to Malaria to study the disease impact, Mceniry and Palloni (2010) study variation in harvest season to study the nutritional impact, Field et al (2009) study in utero exposure to iodine intervention program, Almond and Mazumder (2011) examine the impact of Ramadan observance during pregnancy, Chen and Zhou (2007) study Chinese famine, Neelsen and Stratmann (2011) study Greek Famine. A paper by Almond, Edlund and Palme (2009) using radioactive fallout from Chernobyl incidence to examine school outcome. Ward (2011) studies the long term outcome of school immunization mandate in Canada.

the 1919 exposure cohort in Brazil. Neelsen and Stratmann (2012) find the same long-term effect on pandemic cohort in Switzerland. Finally, using another influenza pandemic, i.e., the 1957 Asian flu in Great Britain, Kelly (2010) finds the epidemic density has a negative effect on test scores, birth weight and height for those who were *in utero* during the influenza. Compared to these other papers testing the fetal origins hypothesis, the setting of this paper—Colonial Taiwan in 1919—was among the worst environments in terms of disease and nutrition. During this period, Taiwan was plagued with malaria, cholera, typhoid, plague and flu. About a quarter of those who were born in the 1920s never lived past 1 year. Following Bozzoli et al. (2009), given the high mortality rates, the selection effect (culling of the weakest) could possibly dominate the scarring effect, thus it is unclear whether the net effect of flu pandemic would be negative.

III The 1918 Influenza Epidemic in Taiwan and the Datasets

Background

The 1918 influenza, also known as Spanish Flu, was one of the most lethal pandemics in human history claiming more than 20 million lives worldwide (Ansart, 2009; Johnson and Mueller, 2002). The basic symptoms include loss of appetite, fever, and headache.¹⁴

The epidemic first entered Taiwan through a port city in northern Taiwan in late October 1918, then spread along the railway from north to south in the heavily populated western plain within two week. The sparsely populated eastern Taiwan was affected much less by the pandemic since regional transportation at that time was still poorly developed (Ding, 2008). The most severely affected regions are areas with better economic development and areas with higher public expenditure. The more developed places in 1918 are also places with better development in economic and health infrastructure even today. Therefore, it is possible that our estimates of impact of influenza could be underestimated due to the inverse relationship between government investment and pandemic severity.

¹⁴ Using patient reports from a Japanese military hospital, Kanawa et al. (2007) find that the duration of hospitalization was 2 weeks. One should note that the medical system in Taiwan was under-developed during this period.

Taiwan was a Japanese colony from 1895 to 1945. Japanese colonial government that ruled Taiwan during that time collected vital statistics for the whole Taiwanese population including the cause of deaths, and published aggregated-monthly and regional-annual records in *Dynamic Census of the Taiwanese Population*. We present the aggregate level of influenza-related death tolls from 1916 to 1926 by quarter in Figure 1a.^{15,16} While the fluctuation in the number of influenza related deaths seems to be seasonal with more deaths in the winter, it is clear that the fourth quarter of 1918 and the first quarter of 1920 are the worst periods of the influenza pandemic. In Figure 1b, we further present monthly influenza death tolls and one can see that the two spikes are driven entirely by the increase in November/December 1918 and January/February 1920.¹⁷

[Figure 1a & Figure 1b inserts here]

Ideally, we would want to use variation in maternal infection rate, but such data are not available. As Almond (2006) has argued, maternal mortality rate is the best proxy available for measuring the severity of the effect of influenza on a fetus. First, the age distribution of influenza victims varies across regions and time. Noymer and Garenne (2000) find that outbreaks were most deadly to the very young, very old and surprisingly those at prime age between 25 and 35.¹⁸ In order to assess fetal origins effects, only measures of pandemic intensity among those of childbearing age are relevant. We do not have

¹⁵ Since it is highly likely that influenza could be misdiagnosed as other respiratory diseases in 1918, following Johnson and Mueller's methodology (2002), we also code other causes of death such as tuberculosis, acute bronchitis, chronic bronchitis, pneumonia, pertussis and diphtheria along with influenza as influenza-related death. The trend for Influenza-related death moves closely with the death by influenza.

¹⁶ Almond examines cohorts born between 1912 and 1922. Our regression analysis include cohort from 1917 to 1926 rather than 1912 since there is a drastic increase in government expenditure around 1917. Scholars who specialize in colonial Taiwanese history generally divide the 45-year Japanese colonization into three periods: 1895-1915, 1916-1936 and 1937-1945. They all suggest that 1915 is an important year, because it marked the end of the 20-year period of armed resistance (Rubenstein, 1999, p. 212). We also noticed that there was a malaria outbreak in 1916 (see Figure 2a for a spike in maternal mortality rates in 1916), and therefore we exclude the 1916 cohorts in the analysis.

¹⁷ Two distinct waves of influenza pandemic seem to be unique to Taiwan and Japan. Richard et al (2009) suggest that 1918 influenza pandemic also continued to plague the US in 1919 and 1920, but the impact is much limited compared to that in Japan in 1920.

¹⁸ For example, when the influenza first hit Taipei (the first major city with reported influenza incidence), public gatherings such as religious and school activities still took place as usual, and it was noted in the news that the influenza was spread among students in several elementary schools in Taipei. By December 1918, many public gatherings were cancelled. It is evident that infectious rates could have specific age/gender profiles depending on the location and timing of the spread.

further breakdown of the pandemic intensity by age group, thus maternal mortality could better capture this aspect of pandemic intensity. Second, Noymer and Garenne (2000) note that males were more likely to die in the influenza pandemic, hence data for the mortality of young women is needed so the estimation will not be confounded by the excess male death. Third, puerperal death would not have been misdiagnosed, as it did not resemble other causes of death as did other major pathological illnesses during the pandemic. Finally, maternal mortality has previously been used as a proxy for the *in utero* health environment. For example, Barker and Osmond (1987) found a strong relationship between local maternal mortality rate and the stroke mortality of offspring.

We first examine whether maternal mortality rates and flu pandemic exhibit similar patterns. Figure 2a shows an overall declining trend of maternal mortality rates with a few spikes during 1916-1926.¹⁹ It shows that during the final quarter of 1918, the probability of women dying from childbirth rose to 1% (November 1.4% and December 0.95%) in 1918, compared to fluctuations between 0.4% and 0.8% during other periods.²⁰ During this period, the occurrence of other infectious disease outbreaks such as malaria and cholera could have also caused an increase in the maternal mortality rate (MMR). Thus in Figure 2b, we present residual MMR estimated from a regression controlling for the

¹⁹ Monthly maternal mortality rate is not available at the regional level. There were 12 administrative regions between 1916 and 1919, 7 administrative regions between 1920 and 1925 and 8 regions in 1926. Given that there are a small number of lusters, we would employ the wild bootstrap technique proposed by Cameron, Gelbach and Miller (2008).

²⁰ There are a few possible explanations as to why MMR in first quarter of 1920 was lower than 1919 despite the high influenza related death tolls. First, Noymer and Garenne (2000) noted that males were substantially more likely to die in the influenza pandemic because of higher tuberculosis morbidity. It could be that most of the deaths in 1920 were male. Second, it was suggested by Taiwan Medical Association Magazine that the second wave of influenza has much higher death rates (13%) compared to the first wave (3%), thus although it has marginally higher death tolls, based on a back-of-envelope calculation, we can infer that fewer people ever contracted influenza in the second wave compared to the first wave. Lastly, as we discussed in earlier section, when the mortality rate is high, selection effect may dominate the scarring effect.

²¹ The Japanese colonial government invested much effort in collecting detail records of causes of death, including various infectious diseases. Therefore, we can identify the timing of each outbreak of disease and the severely infected areas. The spike in 1916 was a malaria outbreak which causes 11000 deaths (0.3% of total population) and the spike in summer of 1919 was a cholera outbreak, 3826 contracted cholera and 2693 died (0.07% of total population) (Sun, 2010). 1916 birth cohort would be excluded from the analysis. On the other hand, another cholera outbreak took place in between two flu pandemics. The cholera outbreak has a few characteristics: first, the mortality rate for 1919 cholera outbreak was high at 71%, meaning that there were only less than 1200 survivors in the total population of 3 million. While cholera outbreak increases maternal mortality rates, it could be difficult to detect the long term effect in the overall population, which would possibly bias our estimates downward. Second, more than 85% of 1919 cholera cases were in Taipei, Tainan and Taidong regions, so in robustness check section, we could exclude these regions, and we still find similar results.

malaria death tolls, cholera death tolls and a quadratic time trend. One thing worth noting is that despite that there were more influenza related deaths in the second wave than first wave, we find that MMR has a bigger spike in the first wave than the second wave. This pattern is interesting and we also observe similar results in Table 2 where we find that the impact of first wave of influenza is greater than the impact of second wave. It is apparent that the residual MMRs fluctuate with influenza death tolls.²²

[Figure 2a & Figure 2b inserts here]

Educational Attainment in the 1980 Census

The 1980 Census of Taiwan records the educational attainment, gender, birth place/ancestral home (*huji*), birth date and birth year for all the Taiwanese alive in 1980.²³ To determine the effect of the 1918 influenza outbreak, we can link the severity of the epidemic, indicated by maternal mortality and infant mortality rates at the time and region of an individual's birth, to one's subsequent educational attainment. We drop all the samples who were not born in Taiwan since there was a massive migration in 1949 from China.²⁴ Table 1 shows the summary statistics of educational attainment taken from the 1980 census for those who were born between 1917 and 1926. On average, this cohort has 3.3 years of schooling, and males (4.8 years) completed significantly more years of schooling than females (1.9 years) did. Furthermore, the average maternal mortality rate and infant mortality rate are 0.47% and 16.55%, respectively. These region-year level variables, which can approximate the average economic social, educational, and sanitary conditions, will be used in the regression later.

[Insert Table 1 here]

Anthropometric Outcome during Adolescence

A series of Taipei County's Statistical Books, 1929-1938, document the average height for male students from age 13 to 17 for each year. This allows us to examine the average height of the pandemic cohort during the teenage years relative to other cohorts. The Japanese colonial government also recorded the height of all students in 1927 and published "Health Statistics for School Students". For each region, each

²² If we regress MMR residual on influenza death tolls, the influenza tolls is significant at 1% level.

²³ Income is not available in Taiwan Census.

²⁴ The 1918 influenza also affects China, so we cannot use the migrants from China as a comparison group.

age, we know how many school kids fall into each of the 2.5 centimeter height bins by gender. These historic measures allow us to exploit the regional variations in pandemic severity.

Health Outcome in 1989

We use data from the *1989 Survey of Health and Living Status of the Elderly in Taiwan*, which records the health conditions for those who were above 65. It contains information on gender, father’s education and occupation, birth year, birth county (which we can then merge to the birth region), and most important of all, whether sample individuals have health problems from a list of disease categories common in the elderly.

IV Empirical Results

4.1 Educational Outcome-Time Series

In this section, we attempt to replicate Almond’s (2006) approach with Taiwanese data. We present some time-series evidence examining the departure of pandemic birth cohorts from the surrounding cohorts in education outcomes.

In accordance with the fetal origins hypothesis, we would expect that those who were *in utero* during the peak of the pandemic (born between December 1918 and August 1919 and between December 1919 and September 1920) would be affected to a greater extent than those who were born just before the pandemic and 9 months after the pandemic. Figure 3 presents the share of male population that has complete high school by birth cohort. Comparing to the linear prediction, those who were born in 1919 are less likely to complete high school.

[Insert Figure 3 here]

Next we modify Almond’s (2006) specification to accommodate the two pandemic waves and to incorporate regional characteristics, region-specific time trends as below:

$$y_{ijt} = \alpha + \beta_1 * I(YOB = 1919)_{ijt} + \beta_2 * I(YOB = 1920)_{ijt} + Female_i + \sum_j Region\ Fixed\ Effects_j + \sum_j Region_j * Time_t + \varepsilon_{ij} \text{—Eq (1)}$$

where y_{ijt} is the education outcome for individual i in region j born in year t . $I(\cdot)$ denotes an indicator

function whether one's year of birth is in the given year. $Female_i$ indicates whether individual i is female. The data includes those who were born between 1917 and 1926. Since a concern may be that error terms from estimating Equation 1 could be serially correlated and correlated within a region, we need to cluster the standard errors. Cameron, Gelbach and Miller (2008) illustrates that, with a small number of clusters (12 regions in our case), cluster standard errors can be biased. We use the procedure described by Cameron et al (2008), to conduct a "wild bootstrap", p-values from wild bootstrap are reported in the Table 2 in bracket.

The key here is examining whether the pandemic cohorts demonstrate any departure from a quadratic trend. Estimates of β_1 and β_2 are reported in Table 2 Panel B and Panel C for men and women. Our estimate suggests a 1.35% drop ($-0.0663/4.8=0.0135$) in years of education for the 1919 male birth cohort while Almond (2006) finds a 1.4% drop in years of education. Another interesting finding is that coefficients on 1920 are smaller than coefficients on 1919, despite the fact that influenza death toll is higher in 1920. There could be several reasons for this finding. First, we observe a smaller spike of maternal mortality rate in 1920 compared to 1918 in Figure 2b. It is possible that pregnant women have become more cautious due to their previous experience with influenza. Second, given the high death tolls in 1920, following Bozzoli et al. (2009), given the high mortality rates, the selection effect (culling of the weakest) could possibly dominate the scarring effect of the flu. Lastly, Taiwan Medical Association Magazine suggested that 1920 flu pandemic has a higher mortality rate conditional on infection (13%) than the 1919 flu pandemic (3%). While the influenza-related death toll in 1920 is slightly higher than that of 1919, the incidence of influenza in 1920 may not be as widespread as in 1919. We include the regression result from estimating the deviation from 1918 to 1920 birth year-quarter cohort on years of education in the Appendix.

[Insert Table 2 here]

As suggested by Brown (2011), the findings in cohort comparison in Almond's (2006) paper could be driven by the underlying differences in parental characteristics. While there was no WWI involvement in Taiwan, it could still be possible that better-informed parents systematically avoided pregnancy during

this period. We do not have parental information in the 1980 Census for the relevant birth cohort. Therefore, we examine this issue in several ways. First, we use the birth rate data, which is stratified by residency²⁵ and collected by Japanese Colonial government, to compare whether there is any difference in birth rates between Japanese and Taiwanese for the pandemic cohorts comparing to surrounding cohorts,²⁶ and we do not find any differences. Second, we use the birth frequencies data, which is stratified by fathers' fields of employment, we compare whether civil servants are more likely to avoid pregnancy during flu pandemic compared to other fields, and we find no significant difference. Lastly, in the *1989 Survey of Health and Living Status of the Elderly in Taiwan*, each respondent reports their parental education level and occupation, so we can perform the same cohort analysis and again we find no significant difference. We provide all three sets of the regression results in the Web Appendix. If one still worries that the second wave of influenza could be expected, we further exclude 1920 birth cohort from our analysis in the robustness check and the results remain robust.

4.2 By Trimester of Exposure

Since we can identify the exact months when influenza death tolls peaked—in November/December 1918 and December/January 1919--and we know the birth month, we can further examine whether influenza exposure during different trimesters could have differential impacts. The specification is as follows:

$$y_{ijt} = \alpha + \beta_1 * I(\text{first trimester in Pandemic}) + \beta_2 * I(\text{second trimester in Pandemic}) + \beta_3 * I(\text{third trimester in Pandemic}) + Female_i + v_j + \varepsilon_{ij} \text{ ----- Eq (2)}$$

I(.) is an indicator function whether individual i has experienced Pandemic in first, second or third trimester. We could code the dummy variable equals to one if two out of the three months in the trimester was during the peak of Pandemic (November-December 1918 or January-February 1920), the dummy

²⁵ Residency is recorded as either mainlander (Japanese) or local (Taiwanese) and field of employment includes Fields of employment include agriculture, transportation, fishery, mining, industry, commercial, government, others, unemployed and housework.

²⁶ Results presented in the Web Appendix.

would equal to zero if none of the three months in the trimester was during the peak.²⁷ We find that no matter which trimester one experience the peak of the flu pandemic *in utero*, this experience will reduce his/her education by about 0.068-0.85 years. There is no obvious pattern as to which trimester is most important in order for the *in utero* environment to have a long term impact.²⁸

[Insert Table 3 Here]

4.3 Regional Variation in Maternal Mortality Rate

Another way to gauge the effect of influenza on developmental outcome is to explore the regional-time variations in influenza severity.²⁹

We estimate the following regression:

$$y_{ijt} = \alpha_{ijt} + \beta_1 * WeightedMMR_{ijt} + \beta_2 * InfantMortalityRates_{jt} + \beta_3 * Female_i + v_j + \varepsilon_{ij} \text{---Eq (3)}$$

where *i* is the individual, *j* is the birth region, and *t* is the birth year-month.³⁰ Infant mortality rate is used to capture the environment during the individual's infancy since this could also affect their later developmental outcomes. The main coefficient of interest is β_1 on MMR, which approximates the health environment faced by the fetus. The MMR measures are available either at annual regional level or monthly aggregate level. There are various ways to construct the appropriate MMR for individual *i*, which we would explore in the robustness check section. First, we estimate Equation 3 with regional-annual MMR and calculate the weighted MMR, where weight is determined based on months of

²⁷ For those who experience only 1 out of 3 months of the trimester during the peak, we would code them as missing. The control group consists of those who never had in utero exposure to influenza.

²⁸ We also try an alternative specification where we control for quarter of birth since Angrist and Kruger (1991) and Buckles and Hungerman (forthcoming) both find that quarter of birth is predictive of years of education in the US. The results are similar and are included in the web appendix.

²⁹ This specification again is modeled after Almond's working paper version (2005). We also try to replicate Almond's (2006) in imputing maternal infection rates using 1917-, 1918- and 1919- maternal mortality rate. Almond uses the following formula: $maternal\ infection\ rate_{1918} = (MMR_{1918} - MMR_{1917}) / (maternal\ morbidity\ rate - MMR_{1917})$. Even though the monthly mortality rate spiked in the winter of 1918, with a strong declining trend and a shorter duration of pandemic, several of the regional MMR_{1918} are still less than MMR_{1917} , leaving this exercise less informative.

³⁰ In the Taiwan census, birth place is reported at the county level. We then match it to the region level as defined in 1919.

in utero exposure in a given year. For example, if one is born in June 1919, then the weighted MMR would be the weighted average between two thirds of 1919 MMR and one third times 1918 MMR. The results are reported in Table 4 Row 1. We find that a 1 percentage point increase in MMR results in a reduction in the years of education by 1.768 years. However, one should be cautious in interpreting this coefficient as causal. This is a period during which Taiwan had experienced an overall improvement in education attainment, so it is essential to control for a linear time trend. Moreover, this improvement in education can vary across regions, so a set of region specific time trends are included in the specifications. Next, we include regional time trends and the results are reported in Row 2. This would be our preferred specification throughout the remainder of this paper. Once we control for the time trend, we find that the coefficient reduce by almost half. Every 1 percentage point increase in MMR would reduce the years of education by 0.866 years ($0.866/3.2 = 27\%$). Compared to Almond's (2005) finding of 0.947 year ($0.947/10.7 = 8.8\%$), while similar in absolute scale, the relative impact is much greater in Taiwan than in the US. In Row 3, we use a lag regional-annual MMR from the previous year. In Row 4, we include sanitation expenditure, educational spending 7 years later (when the cohort reaches the age to enter elementary school) and agriculture GDP per capita at the region-year level. This could capture some additional regional variations that cannot be eliminated by the region-specific time trend and region fixed effect. In Row 5, we use the mean of aggregate-monthly MMRs of the 9 months prior to the birth. e.g. if one is born in September 1918, the average monthly MMR is the mean from monthly MMR from January-September 1918. Throughout various specifications, the estimates appear to be quite stable except the residual MMR specification.³¹

[Insert Table 4 Here]

[Insert Table 5 Here]

Table 5 reports coefficient estimates for several different set ups for sensitivity analyses, using Equation 3 with regional-specific time trends. The first two rows report results for males and females

³¹ We only report linear probability result for simplicity. In the Web Appendix, we report the regression results with probit estimates. We also report the regression results in the Web Appendix where we only control for weighted MMR and adding the additional controls one by one.

separately. Overall, the negative effect of maternal mortality sustains in both genders. In addition, the coefficients for the male subsample are slightly larger than their female counterparts. The gender difference may be due to the fact that, compared to males, very few females (less than 3%) have achieved an educational level higher than junior high school. Row 3 reports the results excluding Hualien and Taitung, the two eastern regions with sparse populations that were less affected by the 1918 influenza due to difficulties in transportation. In footnote 12, we mention that Taipei, Tainan and Taidong saw exposures to cholera in 1919 which resulted in mortality rates but very few survivors. We exclude these regions from our analysis in Row 4. Some may worry that the second wave of influenza may be expected, thus those parents who give births during that time could be the below average parents. In Row 5, we present the same specification as Table 4 Row 2, but excluding 1920 birth cohort.³² Overall, all five measures from this table obtain negative and significant result, which are similar to our baseline results in Table 4 Row 2.

How large is the influenza's effect on educational attainment? The average maternal mortality rate during the first half of 1918 was 0.55%, while the rate for the second half of 1918 was 0.81%. Taking the coefficients estimated in Table 4 at face value, and comparing them with the average educational attainment shown in Table 1, we can calculate the effect of influenza. Given that the maternal mortality rate increased 0.27% during the 1918 pandemic, and the coefficient of maternal mortality on education years is -0.866, it reduces years of education by about 7.0% ($0.27 \times 0.866 / 3.32$). Compared with Almond (2006), which obtained only a 2-3% decrease in years of education, the 1918 influenza asserts a larger impact on Taiwan.³³ Besides the fact that MMR is a proxy for in utero environment, maternal deaths can also have a direct effect on the surviving child. We do a back-of-envelope calculation estimating the direct effect and it suggests that the direct effect would only lower the years of education by 0.01 year (0.26%).³⁴

³² In the Web Appendix, we provide regression results for replicate Table 4 excluding 1920 birth cohort.

³³ Our point estimate is very similar to Almond's (2006). The only difference is that at the baseline education level are much lower in Taiwan than the US. Thus, it appears to have bigger impact.

³⁴ Assuming that all children who lost their mother (during births) receive zero year of education, we should find

4.4 Health Attainment- Height in Childhood and Adolescents

Height for age is widely considered as a long-run measure of nutritional status (Thomas, 1994). If fetal origins hypothesis holds, we shall see those who were born in 1919 are shorter compared to the surrounding cohorts. Our first evidence comes from Taipei County's Statistical Book, 1929-1938, which documents average height for male students from age 13 to 17 in each year. This allows us to back out the average height for those who were born from 1916 to 1921, then trace their average height from age 13 to 17.³⁵ Figure 4 reports the results. Take age 16 for example, we find that the average height for male students born between 1917 and 1921 were 1.58, 1.59, 1.56, 1.59, and 1.59 meters respectively. Almost all of them were the same height at age 16, except the 1919 cohort were 3.5 centimeters (1.38 inch) shorter than their surrounding cohorts. Another interesting pattern is that the 1919 birth cohort seems to experience adolescent growth spurt later than the rest of surrounding birth cohorts. By age 17, the difference in height between 1919 and 1920 birth cohort is 1 cm (0.39 inch). This pattern can be due to a few reasons: first, as we have shown earlier, the average education during this period is only 3.3 years, and it is a very select population who were still in school at age 17. It is possible that this 'selection' effect is stronger for the pandemic cohorts than the surrounding cohorts (especially because we have found that pandemic cohorts receive less education on average). Another reason is related to what Case and Paxson (2008) describe in their paper—children growing up with worse nutritional/disease environment experience later adolescent growth spurts, so the pandemic cohort would only catch up their height in their late teens.³⁶

[Insert Figure 4 here]

Next, we use data from *Health Statistics for School Students, 1927*. For each region, each age (thus birth

the direct impact of increasing MMR by 0.26 percentage points would lower years of education by only 0.01 year (0.26%) ($0.26 \times 0.9974 \times 3.32 = 3.31$)

³⁵ For example, a person who is age 14 in the 1931 Statistical book should be born in 1917.

³⁶ Given that only a small fraction of the population are still enrolled in school at age 13 during this period, the above figure does not reflect the average treatment effect of the pandemic. Yet it is still interesting that, conditional on attending schools, the 1919 cohort are always shorter at all ages.

year), we know how many male and female students were in each of the height categories. To find the corresponding MMR, we use an average of the MMR from the birth year and the lagged MMR. For example, those who are 9 years old in region j , the corresponding MMR would be an average of 1918 and 1917 MMR from region j . We first regress height in centimeters on the average MMR with age, region fixed effect, various region-year specific characteristics and region-specific time trend. We also convert height into z-score for height, so it is easier to compare across age. Table 6 shows that each 0.4 percentage points increase in maternal mortality would decrease the average height of Taiwanese students by approximately 2.8 cm or 0.7 standard deviations. In addition, the effect is slightly larger for males than it is for females.³⁷ Mazumder et al. (2010) use WWII enlistment data to examine the height of pandemic cohorts when they were 22 and find that the 1919 birth cohort is about 0.05 inch (0.12 cm) shorter than the surrounding cohort. Compared to our findings in Figure 3 and Table 6, their magnitude is much smaller.³⁸

[Insert Table 6 here]

4.5 Health Attainment-Health in Old Age

The Barker hypothesis also suggests that fetal influenza exposure can affect health conditions later in life. We investigate this claim by using the 1989 Survey of Health and Living Status of the Elderly in Taiwan and present the results in Table 7. The model specification is the same as for Equation 3 with region-specific time trends. Although we know from this dataset whether an individual is born in the first or the second half of the year, we do not have the individual birth month, and so we cannot calculate the weighted MMR per the earlier specification.³⁹ For those who were born between January and June of any

³⁷ Mazumder et al (2010) find that men born in 1919 are about 0.05 inch (0.127cm).

³⁸ Japanese government also collected information on number of live births and still births by gender-year-region. Trivers Willard hypothesis suggest that male-to-female sex ratio at birth is lower when in utero environment is poor (Almond and Edlund, 2007). We find that there are more still births among boys than girls in areas with higher MMR, but the results are not statistically significant. Given that our sample size is small for this analysis, it could be an issue with statistical power.

³⁹ Birth month was collected in the survey, but it was not available in the publically accessible dataset. We are working on obtaining birth month information from the statistical agency that collected the data. The finest level of birth date information that is currently available to us is birth year and whether one is born in the first half or the second half of the year.

given year, we assign to them the maternal mortality rates from the previous year for their region. For those who were born between July and December, we assign them the maternal mortality rates from that year.

As the results in Table 7 indicate, we find that an increase in maternal mortality rate increases an individual's probability of having respiratory disease (including asthma, bronchitis and other breathing related disease), diabetes, kidney disease and glaucoma. These findings are consistent with the findings from Mazumder et al (2010).

[Insert Table 7 here]

V Discussion and Conclusion

Using maternal mortality rate as a proxy measuring the degree of exposure and combining several historical and current datasets in Taiwan, we find that exposure to influenza while in utero has a profound adverse effect on later outcomes. The pandemic cohort had less education, shorter height as teenagers and a higher chance of having various health issues including kidney disease, glaucoma, respiratory problems and diabetes. This result is consistent with the fetal origins hypothesis.

Comparing the magnitude of the 1918 influenza impact across regions may shed light on the “thrifty phenotype” claim of fetal origins hypothesis, which argues that cohorts who encounter in utero shock might do worse when they encounter postnatal abundance. In other words, given the same pandemic severity, we would observe a larger negative effect for those pandemic cohorts who reside in places with a better environment. Compared to the US, Taiwan had a much lower education level, a higher infant mortality rate, and shorter life expectancy at birth during this time period, so we might expect the pandemic to have a smaller impact in Taiwan. However, comparing our findings with Almond's (2006) finding, we find that pandemic has a bigger negative impact in Taiwan than in the US. We do want to point out that it is difficult to test the thrifty phenotype claim in this particular setting since changes in maternal mortality rate during the 1919 pandemic is greater in Taiwan (0.4 percentage points) than the US (0.25 percentage points). This could be an interesting direction for future research related to the fetal origins hypothesis.

References

- Almond, D., Chay, K., & Lee, D. (2005). The cost of low birth weight. *Quarterly Journal of Economics*, 120(3),1031-1083.
- Almond, D. (2005). Is the 1918 influenza pandemic over? Long-Term effects of in utero influenza exposure in the Post-1940 U.S. population. *Working Paper*.
- Almond, D. (2006). Is the 1918 influenza pandemic over? Long-Term effects of in utero influenza exposure in the Post-1940 U.S. population. *Journal of Political Economy*, 114(4), pp. 672-712.
- Almond, D., & Edlund, L. (2007). Trivers–Willard at birth and one year: Evidence from US natality data 1983–2001. *Proceedings of the Royal Society B: Biological Sciences*, 274(1624), 2491-2496.
- Almond, D., Edlund, L., & Palme, M. (2009). Chernobyl's subclinical legacy: Prenatal exposure to radioactive fallout and school outcomes in Sweden. *The Quarterly Journal of Economics*, 124(4), pp. 1729-1772.
- Almond, D., & Mazumder, B. (2005). The 1918 influenza pandemic and subsequent health outcomes: An analysis of SIPP data. *The American Economic Review*, 95(2, Papers and Proceedings of the One Hundred Seventeenth Annual Meeting of the American Economic Association, Philadelphia, PA, January 7-9, 2005), pp. 258-262.
- Almond, D., and Mazumder, B.(2011) Health Capital and the Prenatal Environment: The Effect of Ramadan Observance during Pregnancy. *American Economic Journal: Applied Economics*, 3(4): 56–85.
- Almond, D., & Currie, J. (2011a). Human Capital Development Before Age Five. in Orley Ashenfelter and David Card (Eds.), *The Handbook of Labor Economics*, 4b. Amsterdam: Elsevier Science B.V.
- Almond, D. & Currie, J. (2011b). Killing Me Softly: The Fetal Origins Hypothesis. *Journal of Economics Perspectives*.25(3), 153-172.
- Ansart, S., (2009), Mortality burden of the 1918–1919 influenza pandemic in Europe, *Influenza and other Respiratory Viruses*, 3(3), 99-106.
- Barker, D. J. P. (1990). The fetal and infant origins of adult disease: The womb may be more important than the home. *BMJ: British Medical Journal*, 301(6761), p. 1111.

- Barker, D. J. P. (1992). Fetal and infant origins of adult disease. *BMJ Books*,
- Barker, D. J. P. (1998). *Mothers, babies and health in later life, 2nd edition* Edinburgh: Churchill Livingstone.
- Barker, D. J. P., & Osmond, C. (1987). Death rates from stroke in England and Wales predicted from past maternal mortality. *British Medical Journal (Clinical Research Edition)*, 295(6590), pp. 83-86.
- Barker, D., Eriksson, J., ForsÅ©n, T., & Osmond, C. (2002). Fetal origins of adult disease: Strength of effects and biological basis. *International Journal of Epidemiology*, 31(6), 1235-1239.
- Barreca, A. (2010). The long-term economic impact of in utero and postnatal exposure to malaria. *Journal of Human Resources*, 45(4): 865–892
- Behrman, J. R., & Rosenzweig, M. R. (2004). Returns to birth weight. *The Review of Economics and Statistics*, 86(2), pp. 586-601.
- Black, S. E., Devereux, P. J., & Salvanes, K. G. (2007). From the cradle to the labor market? the effect of birth weight on adult outcomes. *The Quarterly Journal of Economics*, 122(1), 409-439.
- Bozzoli, C., Deaton, A., & Quintana-Domeque, C. (2009). Adult height and childhood disease. *Demography*, 46(4), 647-669.
- Brown, A. S., Begg, M. D., Gravenstein, S., Schaefer, C. A., Wyatt, R. J., Bresnahan, M., et al. (2004). Serologic evidence of prenatal influenza in the etiology of schizophrenia. *Archives of General Psychiatry*, 61(8), 774-780.
- Brown, R., (2011). *The 1918 U.S. influenza pandemic as a natural experiment, revisited*. .Unpublished
- Buckles, K & Hungerman, D, (Forthcoming) Season of Birth and Later Outcomes: Old Questions, New Answers. . *Review of Economics and Statistics*
- Cameron, A. C., Gelbach, J. B., & Miller, D. L. (2008). Bootstrap-based improvements for inference with clustered errors. *Review of Economics and Statistics*, 90(3), 414-427.
- Case, A., Fertig, A., & Paxson, C. (2005). The lasting impact of childhood health and circumstance. *Journal of Health Economics*, 24(2), 365-389.

- Case, A., Lubotsky, D., & Paxson, C. (2002). Economic status and health in childhood: The origins of the gradient. *The American Economic Review*, 92(5), pp. 1308-1334.
- Chen, Y. & Zhou, L.(2007). The long-term health and economic consequences of the 1959-1961 famine in China. *Journal of Health Economics*, 26(4), 659-681.
- Chou, W. (1995). Being forgotten in history: The experience of taiwanese soldiers during japanese rule. [歷史的記憶與遺忘：「臺籍日本兵」之戰爭經驗的省思] *Current*, (107), 34-49.
- Dalton Conley, & Bennett, N. G. (2000). Is biology destiny? birth weight and life chances. *American Sociological Review*, 65(3), pp. 458-467.
- Ding, K. C. (2008). 1918-1920 H1N1 flu pandemic in Taipei. [1918-20 年台北地區的 H1N1 流感疫情] *Life Science News*, 12, 141-175.
- Dynamic census for population in Taiwan (台灣人口動態統計)(1916-1925)*. Japanese Colonial Government in Taiwan.
- Field, E., Robles, O., & Torero, M. (2009). Iodine Deficiency and Schooling Attainment in Tanzania. *American Economic Journal: Applied Economics*, 1(4): 140–69.
- Garthwaite, C. (2009). *The effect of in-utero conditions on long term health: Evidence from the 1918 spanish flu pandemica*. Unpublished
- Hack, M., Flannery, D. J., Schluchter, M., Cartar, L., Borawski, E., & Klein, N. (2002). Outcomes in young adulthood for very-low-birth-weight infants. *N Engl J Med*, 346(3), 149-157.
- Haines, M.,(2001). The Urban Mortality Transition in the United States, 1800-1940. NBER Historical Working Paper No. 134
- Health statistics for school students. (昭和二年學校生徒及兒童身體檢查統計書)(1927)*. Japanese Colonial Government in Taiwan.
- Jason D. Boardman, Powers, D. A., Padilla, Y. C., & Hummer, R. A. (2002). Low birth weight, social factors, and developmental outcomes among children in the united states. *Demography*, 39(2), pp. 353-368.
- Johnson, N. & Mueller, J. (2002). Updating the accounts: global mortality of the 1918-1920 "Spanish" influenza pandemic. *Bulletin of the History of Medicine* 76:105-15

- Johnson, R. C., & Schoeni, R. F. (2011). The influence of early-life events on human capital, health status, and labor market outcomes over the life course. *The B.E. Journal of Economic Analysis & Policy*, 11(3), 3.
- Kawana, A. et al (2007). Spanish Influenza in Japanese Armed Forces, 1918–1920 Emerging Infectious Diseases 2007 April; 13(4): 590–593.
- Kelly, E. (2011). The Scourge of Asian Flu: In utero Exposure to Pandemic Influenza and the Development of a Cohort of British Children. *Journal of Human Resources* 46(4), 669–694.
- Konje, J. C., Bell, S. C., Morton, J. J., De Chazal, R., & Taylor, D. J. (1996). Human fetal kidney morphometry during gestation and the relationship between weight, kidney morphometry and plasma active renin concentration at birth. *Clinical Science*, 91, 169-175.
- Langley-Evans, S. C. (2001). Fetal programming of cardiovascular function through exposure to maternal undernutrition. *Proceedings of the Nutrition Society*, 60(04), 505-513.
- LEE, D. S. (2009). Training, wages, and sample selection: Estimating sharp bounds on treatment effects. *Review of Economic Studies*, 76(3), 1071-1102.
- Lin, M., & Liu, J. (2009). Do lower birth weight babies have lower grades? twin fixed effect and instrumental variable method evidence from Taiwan. *Social Science & Medicine*, 68(10), 1780.
- Lleras-Muney, A. (2005). The Relationship between Education and Adult Mortality in the U.S. *Review of Economic Studies*, 72(1), 189-221.
- Mazumder, B., Almond, D., Park, K., Crimmins, E. M., & Finch, C. E. (2010). Lingering prenatal effects of the 1918 influenza pandemic on cardiovascular disease. *J Dev Orig Health Dis.*, 1(1), 26-34.
- Mceniry, M., and Palloni, A.(2010) Early Life Exposures and the Occurrence and Timing of Heart Disease Among the Older Adult Puerto Rican Population *Demography*, 47(1), 23–43.
- Neelsen, S. & Stratmann, T, 2011. Effects of prenatal and early life malnutrition: Evidence from the Greek famine. *Journal of Health Economics*, 30(3), 479-488.
- Neelsen, S. & Stratmann, T. (2012). Long-Run Effects of Fetal Influenza Exposure: Evidence from Switzerland. *Social Science and Medicine*, 74(1), 58-66.

Nelson, R. E. (2010). Testing the fetal origins hypothesis in a developing country: Evidence from the 1918 influenza pandemic. *Health Economics*, 19(10), 1181-1192.

Noymer, A., & Garenne, M. (2000). The 1918 influenza epidemic's effects on sex differentials in mortality in the united states. *Population and Development Review*, 26(3), 565-581.

Oreopoulos, P., Stabile, M., Walld, R., & Roos, L. L. (2008). Short-, medium-, and long-term consequences of poor infant health: An analysis using siblings and twins. *Journal of Human Resources*, 43(1)

Ozanne, S. E., & Hales, C. N. (2004). Lifespan: Catch-up growth and obesity in male mice. *Nature*, 427(6973), 411-412.

Population and housing census (戶口及住宅普查) Directorate General of Budget, Accounting and Statistics, Taiwan, 1980 Survey.

RICHARD, S.A., N. SUGAYA, L. SIMONSEN, M. A. MILLER and C. VIBOUD (2009). A comparative study of the 1918–1920 influenza pandemic in Japan, USA and UK: mortality impact and implications for pandemic planning. *Epidemiology and Infection*, 137, pp 1062-1072

Royer, H. (2009). Separated at girth: US twin estimates of the effects of birth weight. *American Economic Journal: Applied Economics*, 1(1), pp. 49-85.

Rubinstein, M. (Ed.). (1999). *Taiwan: A new history* M E Sharpe Inc.

Sun, W. (2010). The governance meanings of the major epidemic prevention in Taiwan during the early stage under japanese rule. (Master, National University of Tainan).

Taipei County Statistical Books (台北州統計書) (1929-1938).

Taiwan Census Report (1980) (中華民國六十九年 臺閩地區戶口及住宅普查報告)

Thomas, D. (1994). Like father, like son; like mother, like daughter: Parental resources and child height. *The Journal of Human Resources*, 29(4, Special Issue: The Family and Intergenerational Relations), pp. 950-988.

Tsai, C. H. (2005). Rulers during pandemic flu: Two civil governor during japanese colonization. [世紀流感下的統治者—日治時期的兩位總督] *Chi-Nan University Electronic Journal*, 33

Ward, Courtney (2011) "The long-term economic effects of school immunization mandates: does prenatal exposure to state school immunization policy impact health and well-being in later life?" Unpublished Manuscript.

Figure 1A: Influenza-Related Death

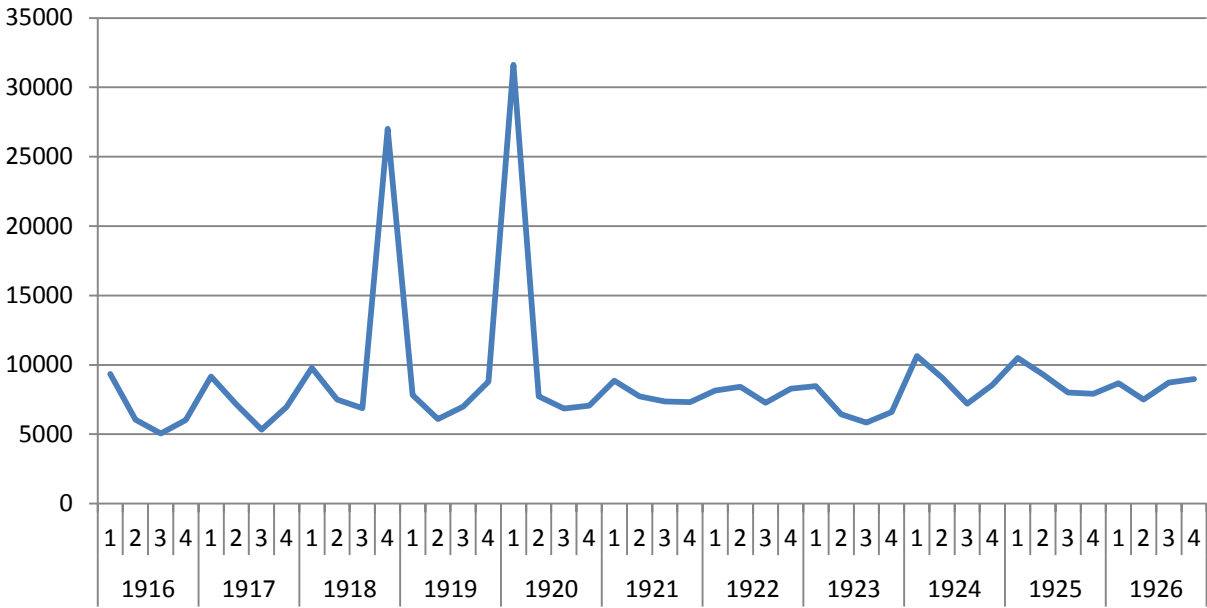


Figure 1b: Influenza-Related Death

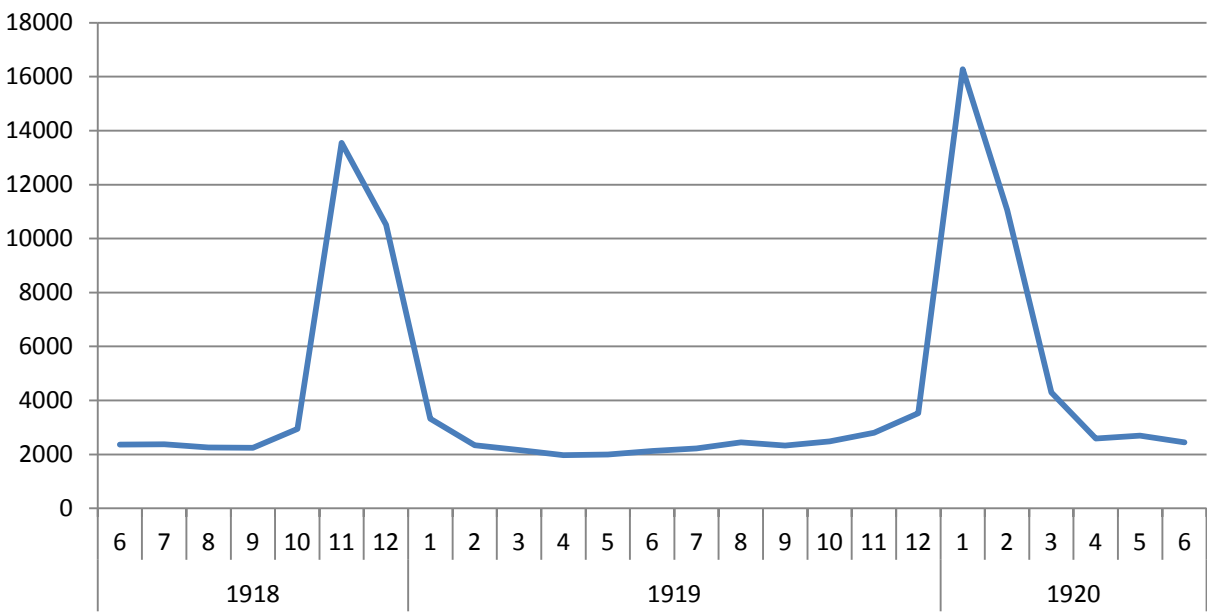


Table 2a: Maternal Mortality Rate Over Time

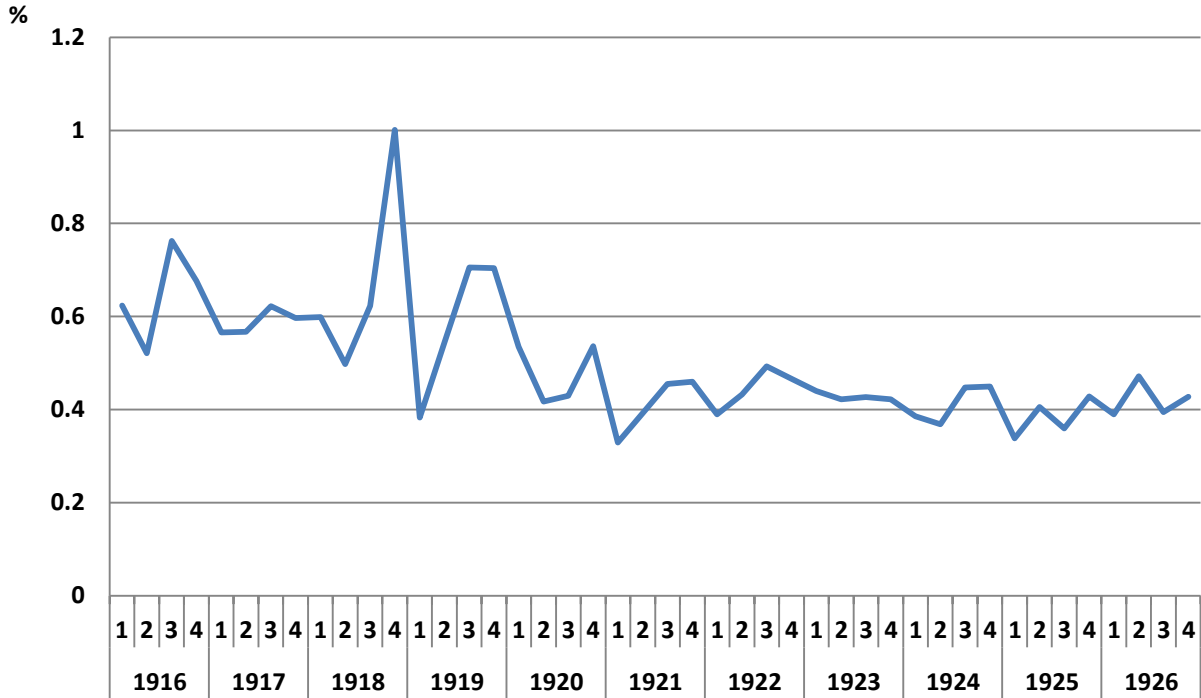


Figure 2b: Residual Maternal Mortality Rates Over Time

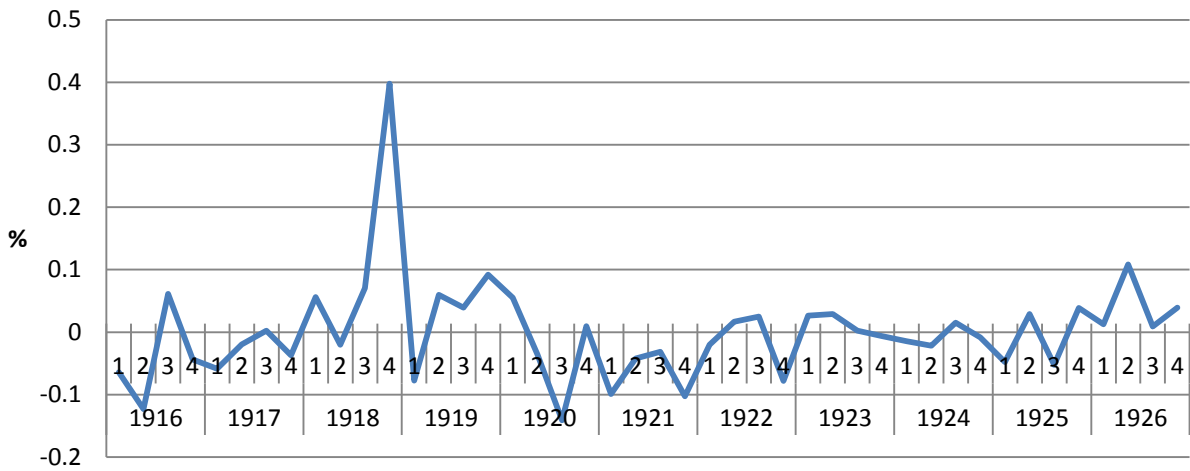
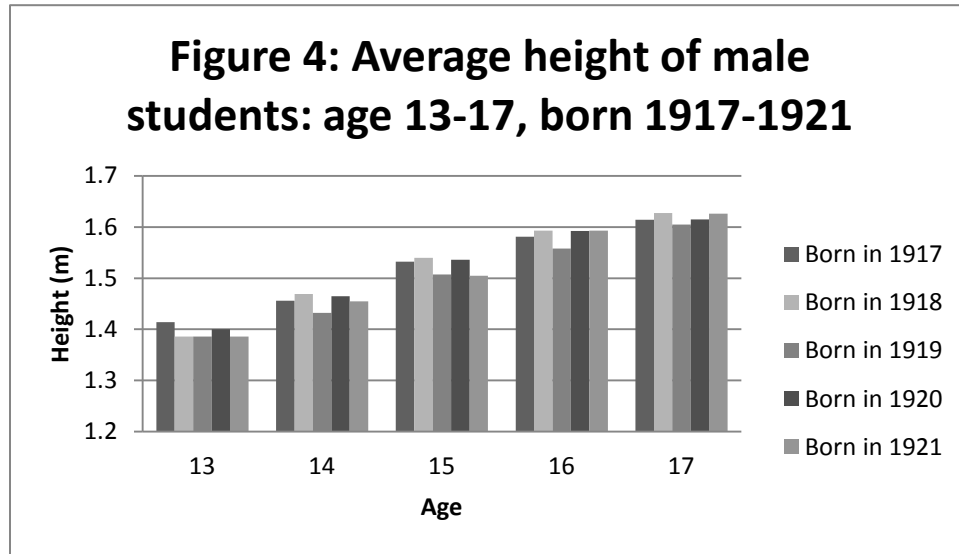
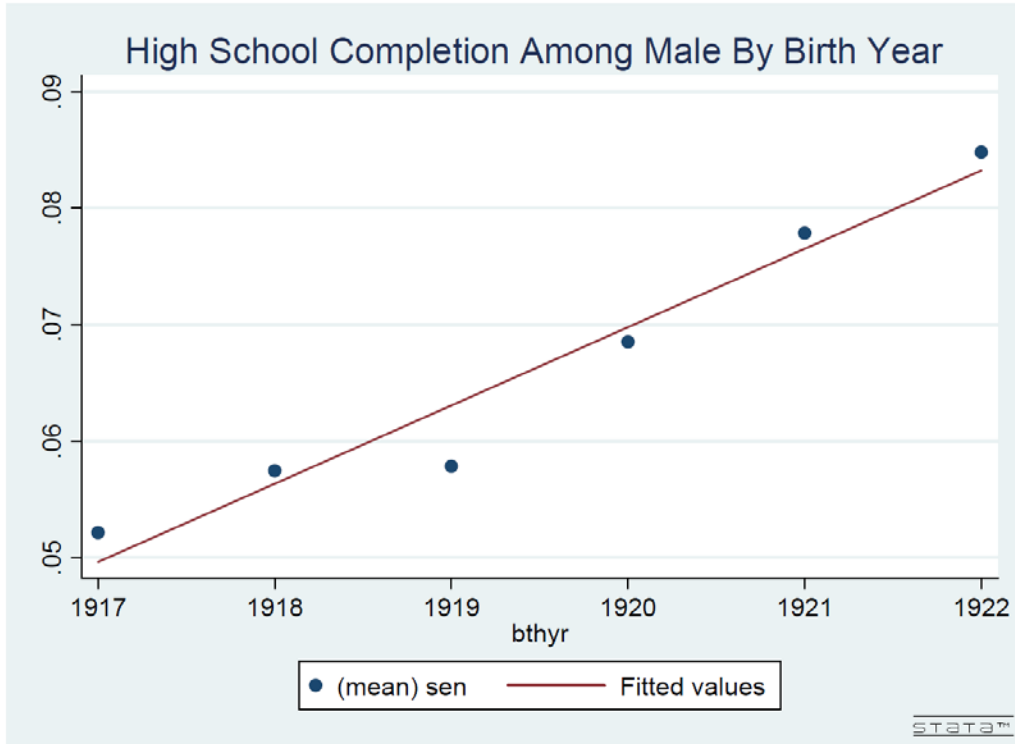


Figure 3: High School Completion Among Male By Birth Year



Data Source: Taipei County's Statistical Books, 1929-1938

Table 1A: Individual Level Summary Statistics from
1980 Census for 1917-1926 Birth Cohorts

	<u>all</u>	<u>male</u>	<u>female</u>
Years of Education	3.32 (3.864)	4.807 (3.964)	1.932 (3.196)
Literacy Rate (%)	52.22 (0.500)	72.63 (0.446)	33.17 (0.471)
Elementary School Completion (%)	46.98 (0.470)	66.48 (0.472)	28.77 (0.453)
Middle School Complete (%)	9.92 (0.299)	15.89 (0.366)	4.34 (0.204)
High School Completion (%)	5.23 (0.223)	8.46 (0.278)	2.21 (0.147)
College Completion (%)	1.53 (0.123)	2.79 (0.165)	0.34 (0.583)
Female (%)	51.72 (0.500)		
Number of Observations	809721	390910	418811

Table 1B: Regional-Year Level Summary Statistics

	Mean	Min	Max
Maternal mortality rate (%)	0.47	0.11	1.00
Infant mortality rate (%)	16.55	11.4	24.74
7-year Lagged Education Expenditure (per capita) ¹	1.188	0.131	3.584
Government Sanitary Expenditure (per capita)	0.11	0.006	0.635
Agriculture GDP per capita	41.51	18.58	71.64

1. Usually one enters school when he/she turns 7. Thus the reported education expenditure is lagged 7 years. It is imputed using total government education expenditure for a given year/region divided by total population in a given year/region. Note: Standard errors are reported in parentheses.

Table 2: Departure in Education Outcomes from 1917-1926 Birth Cohorts

	(1)	(2)	(3)	(4)
VARIABLES	Years of Schooling	Elementary School	Middle School	High School
Panel A: All (Male and Female)				
1919 Birth Cohort	-0.0618***	-0.0047**	-0.0052***	-0.0051***
p-value from cluster	[0.011]	[0.066]	[0.001]	[0.000]
p-value from wild bootstrap	[0.000]	[0.004]	[0.000]	[0.000]
1920 Birth Cohort	-0.0412	-0.004	-0.004***	-0.0028***
p-value from cluster	[0.098]	[0.260]	[0.005]	[0.000]
p-value from wild bootstrap	[0.136]	[0.248]	[0.000]	[0.004]
Observation	870468	870468	870468	870468
Panel B: Male Only				
1919 Birth Cohort	-0.0663***	-0.0025	-0.0073***	-0.0084***
p-value from cluster	[0.005]	[0.229]	[0.007]	[0.000]
p-value from wild bootstrap	[0.004]	[0.108]	[0.000]	[0.000]
1920 Birth Cohort	-0.0371	-0.0029	-0.0037*	-0.0044**
p-value from cluster	[0.138]	[0.297]	[0.146]	[0.001]
p-value from wild bootstrap	[0.128]	[0.328]	[0.096]	[0.016]
Observation	419554	419554	419554	419554
Panel C: Female Only				
1919 Birth Cohort	-0.0562**	-0.0065**	-0.0031**	-0.0022***
p-value from cluster	[0.042]	[0.120]	[0.000]	[0.006]
p-value from wild bootstrap	[0.032]	[0.044]	[0.016]	[0.000]
1920 Birth Cohort	-0.0424	-0.0046	-0.0042***	-0.0013*
p-value from cluster	[0.272]	[0.419]	[0.002]	[0.153]
p-value from wild bootstrap	[0.320]	[0.456]	[0.000]	[0.076]
Observation	450914	450914	450914	450914

Note: Wild bootstrap p-values with 500 repetitions and p-values from clustering at regional level are in brackets. * significant at 10% level, ** at 5% level and *** at 1% level based on wild bootstrap p-values. All models allows for correlation among observations within the same region. Infant mortality rate, gender, region dummies and region-specific time trends are included.

Table 3: Differential Impact of In Utero Exposure to Influenza Outbreaks
by Trimesters 1917-1922

	<u>Dependent variable</u>			
	Years of Schooling (1)	Elementary School (2)	Middle School (3)	High School (4)
First Trimester	-0.0684*	-0.0057	-0.0064***	-0.0039**
<i>p-value from clustering</i>	[0.023]	[0.124]	[0.002]	[0.015]
<i>p-value from wild bootstrap</i>	[0.052]	[0.112]	[0.000]	[0.040]
Second Trimester	-0.068**	-0.0062*	-0.0054**	-0.0024*
<i>p-value from clustering</i>	[0.025]	[0.077]	[0.015]	[0.007]
<i>p-value from wild bootstrap</i>	[0.048]	[0.096]	[0.020]	[0.072]
Third Trimester	-0.085***	-0.0104***	-0.0033*	-0.0029
<i>p-value from clustering</i>	[0.004]	[0.004]	[0.108]	[0.056]
<i>p-value from wild bootstrap</i>	[0.000]	[0.000]	[0.092]	[0.136]

Note: N=399,818. Each column represent results from a regression. Wild bootstrap p-values with 500 repetitions and p-values from clustering at regional level are in brackets. * significant at 10% level, ** at 5% level and *** at 1% level based on wild bootstrap p-values. All models allows for correlation among observations within the same region. We code each of the trimester as 1 if one experience 2 out of 3 months of trimester during the peak of pandemic (defined as Nov/Dec 1918 or Jan/Feb 1920), 0 if zero month out of 3 months of trimester during the peak of pandemic Those who experience only 1 month of trimester during the peak of pandemic would be coded as missing. Infant mortality rate, gender, region dummies and region-specific time trends are also included in all regressions.

Table 4: Effect of Maternal Mortality Rate on Educational Attainment 1917-1922

	Dependent variable			
	Years of Schooling	Elementary School	Middle School	High School
(1): Estimation of Equation 3				
weighted maternal mortality rates	-1.768***	-0.230***	-0.072***	-0.044***
p-value from cluster	[0.000]	[0.000]	[0.000]	[0.000]
p-value from wild bootstrap	[0.000]	[0.000]	[0.004]	[0.000]
(2): (1) + Region-specific time trends				
weighted maternal mortality rates	-0.866**	-0.098*	-0.043**	-0.035*
p-value from cluster	[0.129]	[0.153]	[0.110]	[0.081]
p-value from wild bootstrap	[0.028]	[0.100]	[0.036]	[0.076]
(3): (2) + MMR(t-1)				
MMR (t-1)	-0.694*	-0.084	-0.033**	-0.024**
p-value from cluster	[0.139]	[0.179]	[0.061]	[0.041]
p-value from wild bootstrap	[0.056]	[0.180]	[0.016]	[0.016]
(4): (2) + Government Sanitation Expenditure, Education Expenditure and regional GDP per capita				
weighted maternal mortality rates	-0.824**	-0.097	-0.038**	-0.030
p-value from cluster	[0.143]	[0.155]	[0.146]	[0.132]
p-value from wild bootstrap	[0.048]	[0.136]	[0.040]	[0.116]
(5): (2) + 9-Month Average MMR				
9-month moving average MMR	-1.224*	-0.141	-0.063**	-0.045**
p-value from cluster	[0.160]	[0.194]	[0.108]	[0.083]
p-value from wild bootstrap	[0.072]	[0.348]	[0.028]	[0.040]

Note: N=445,987. Each coefficient represent a result from a regression. Wild bootstrap p-values with 500 repetitions and p-values from clustering at regional level are in brackets. * significant at 10% level, ** at 5% level and *** at 1% level based on wild bootstrap p-values. All models allow for correlation among observations within the same region. Infant mortality rate, gender and region dummies are also included in all regressions.

Table 5: Robustness Check of Maternal Mortality Rate on Educational Attainment 1917-1922

	<u>Dependent Variables</u>			
	Years of Schooling	Elementary School	Middle School	High School
	(1)	(2)	(3)	(4)
(1): only male				
weighted maternal mortality rates	-1.067*	-0.100*	-0.069*	-0.060**
p-value from cluster	[0.097]	[0.120]	[0.104]	[0.074]
p-value from wild bootstrap	[0.052]	[0.100]	[0.100]	[0.044]
(2): only female				
weighted maternal mortality rates	-0.672*	-0.096	-0.019	-0.012
p-value from cluster	[0.192]	[0.205]	[0.181]	[0.181]
p-value from wild bootstrap	[0.092]	[0.112]	[0.228]	[0.240]
(3): Excluding Eastern Regions				
weighted maternal mortality rates	-0.882**	-0.095	-0.049**	-0.039**
p-value from cluster	[0.140]	[0.181]	[0.087]	[0.074]
p-value from wild bootstrap	[0.048]	[0.148]	[0.012]	[0.048]
(4): Excluding Taipei, Tainan and Taidong in 1919/1920				
weighted maternal mortality rates	-0.885*	-0.102	-0.045*	-0.032
p-value from cluster	[0.153]	[0.180]	[0.100]	[0.122]
p-value from wild bootstrap	[0.092]	[0.148]	[0.064]	[0.180]
(5): Excluding 1920 birth cohort				
weighted maternal mortality rates	-0.886	-0.098	-0.047**	-0.038*
p-value from cluster	[0.157]	[0.194]	[0.107]	[0.085]
p-value from wild bootstrap	[0.108]	[0.204]	[0.048]	[0.084]

Note: Each coefficient represent a result from a regression. Wild bootstrap p-values with 500 repetitions and p-values from clustering at regional level are in brackets. * significant at 10% level, ** at 5% level and *** at 1% level based on wild bootstrap p-values. All models allow for correlation among observations within the same region. Infant mortality rate, gender, region dummies and region-specific time trends are also included in all regressions.

Table 6: Effect of Maternal Mortality Rate on Height in the 1927 Height Report of School Children

	Dependent Variables	
	(1) height(centimeter)	(2) height(z-score)
All	-7.195*** (1.324)	-1.855*** (0.383)
Male	-7.519*** (1.756)	-1.943*** (0.456)
Female	-6.786*** (0.915)	-1.638*** (0.340)

Note: ***, **, and * are significant at 1%, 5%, 10% respectively. Each coefficient is from a separate regression. Standard errors clustered at the regional level are reported in parentheses. There are a total of 83,211 male students and 31,039 female students. Maternal mortality rate (ranging from 0 to 100) is imputed as an average of region-specific maternal mortality rate from the year (1927-age) and the year prior to that. Age is included in regressions for Column 1, and Infant mortality rate, regional-year specific education and public health expenditure, region dummies and region-specific time trends are included in all regressions.

Table 7: Effect of 1918 Maternal Mortality Rate on Disease Prevalence in the 1989 Elderly Survey

	Kidney Disease (1)	Vertigo (Dizzy) (2)	Circulatory disease (3)	Respiratory disease (4)	Glaucoma (5)	Diabetes (6)
<i>Mean</i>	<i>0.047</i>	<i>0.271</i>	<i>0.163</i>	<i>0.146</i>	<i>0.0135</i>	<i>0.0512</i>

Panel A: Linear Probability Model

weighted maternal mortality rate	0.2907	0.25682	0.25434	0.2253***	0.0464**	0.11925*
p-value from clustering	[0.016]	[0.170]	[0.021]	[0.039]	[0.007]	[0.021]
p-value from wild bootstrap	[0.136]	[0.116]	[0.120]	[0.004]	[0.040]	[0.096]

Panel B: Probit Model

weighted maternal mortality rate	2.897***	0.807	0.965***	0.971**	1.295**	1.040***
p-value from clustering	[0.000]	[0.138]	[0.010]	[0.013]	[0.045]	[0.007]

Note: Wild bootstrap p-values with 500 repetitions and p-values from clustering at regional level are in brackets. * significant at 10% level, ** at 5% level and *** at 1% level based on wild bootstrap p-values. All models allow for correlation among observations within the same region. Infant mortality rate, gender, region dummies and region-specific time trends are also included in all regressions.

Appendix Table: Departure in Education Outcomes
from 1917-1926 Birth Cohorts

	<u>Dependent variable</u>			
	Yrs of education	Elementary School	Middle School	High School
q_19184	-0.0039 (0.0373)	0.0014 (0.0059)	-0.0021 (0.0022)	-0.0020 (0.0018)
q_19191	-0.0630** (0.0261)	-0.0041 (0.0028)	-0.0064** (0.0022)	-0.0052*** (0.0016)
q_19192	-0.1091*** (0.0159)	-0.0093*** (0.0025)	-0.0077*** (0.0014)	-0.0066*** (0.0010)
q_19193	-0.0370 (0.0367)	-0.0037 (0.0043)	-0.0025 (0.0025)	-0.0031* (0.0015)
q_19194	-0.0567 (0.0336)	-0.0038 (0.0039)	-0.0051** (0.0023)	-0.0063*** (0.0020)
q_19201	-0.0620** (0.0230)	-0.0067* (0.0032)	-0.0043** (0.0015)	-0.0028** (0.0010)
q_19202	-0.0756 (0.0547)	-0.0081 (0.0082)	-0.0072*** (0.0022)	-0.0021 (0.0013)
q_19203	-0.0274 (0.0447)	-0.0017 (0.0054)	-0.0045 (0.0030)	-0.0025 (0.0015)
Constant	-329.1337*** (4.6927)	-45.0720*** (0.7693)	-12.1505*** (0.1145)	-5.8007*** (0.1090)
Observations	870,468	870,468	870,468	870,468
R-squared	0.1698	0.1752	0.0475	0.0274

Note: Each of the coefficient represent deviation in years of education for a given birth year-quarter cohort relative to those who were born between 1917 to 1926. All models allows for correlation among observations within the same region. Infant mortality rate, female dummy, birth quarter dummies, region dummies and region-specific time trends are included. The highlighted areas correspond to 9-months delay of the two spikes occurred in Figure 2b in 1918 4th quarters and 1919 4th quarter.