



**UNIVERSITY OF HOUSTON  
Campus Facilities Planning Committee  
Request for Project Approval Form**

- |           |  |  |
|-----------|--|--|
| <b>1.</b> | <b>Project Number</b>                  | <b>P779289</b>                           |
| <b>2.</b> | <b>Project Name</b>                    | <b>Tank Farm for Bulk Fuel</b>           |
| <b>3.</b> | <b>Committee Date</b>                  | <b>02/13/09</b>                          |
| <b>4.</b> | <b>Requesting Department</b>           | <b>Engineering &amp; Campus Services</b> |
| <b>5.</b> | <b>Contact Name &amp; Phone Number</b> | <b>Dave Irvin, x-25579</b>               |
| <b>6.</b> | <b>Presenter:</b>                      | <b>James Norcom, III</b>                 |
| <b>7.</b> | <b>Description of Request</b>          |  |

**Project Overview:**

This work involves Professional Services for Design Build of the future Bulk Fuel Terminal, Equipment and Location on the University of Houston Main Campus for Support Back Generator Systems.

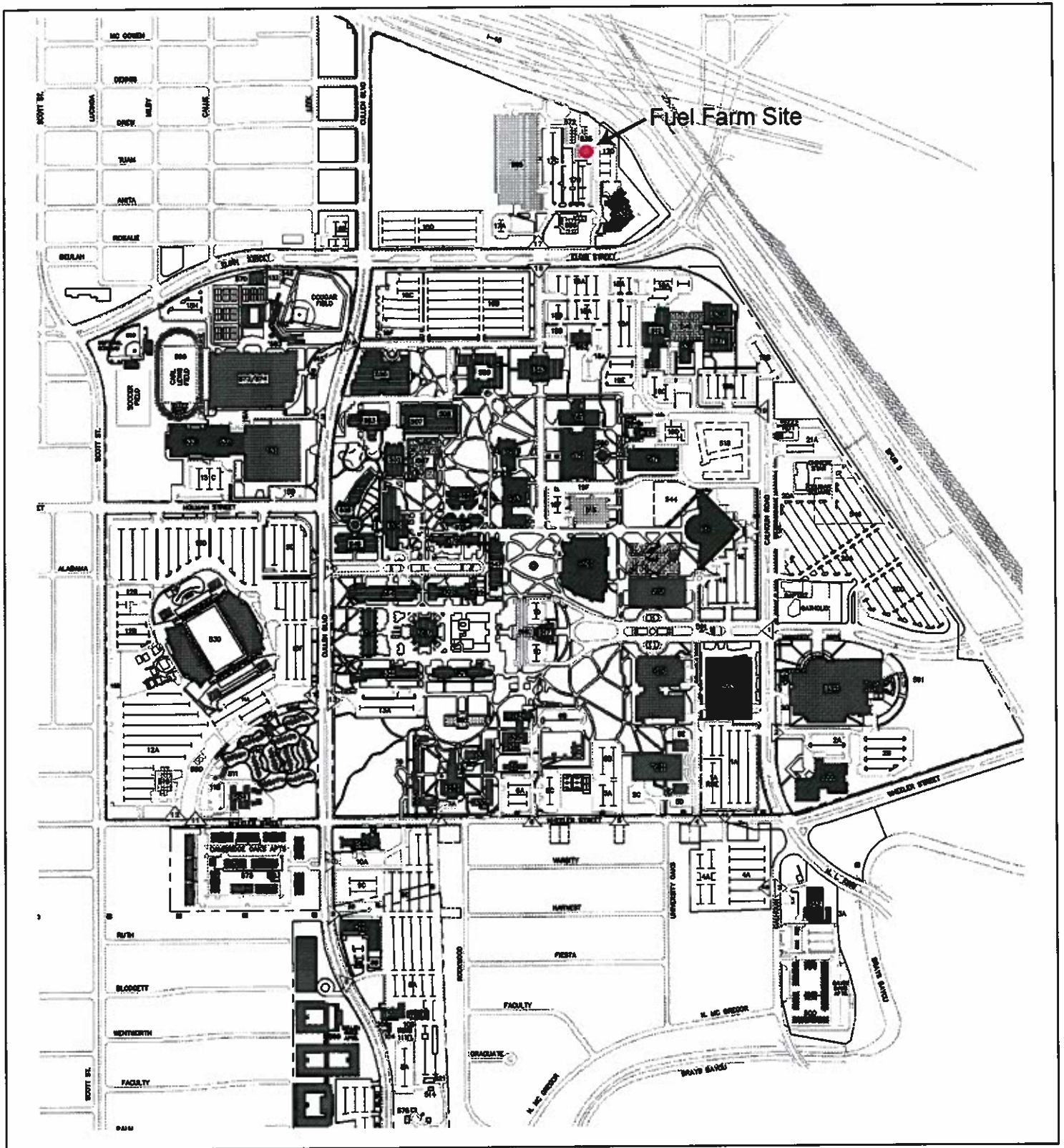
**Background Information:**

This Tank Farm project is the first project to be issued under the Emergency Initiative of EVP/EVC Dr. Carl Carlucci. The Emergency Initiative is based on the emergency response model at the University of South Florida.

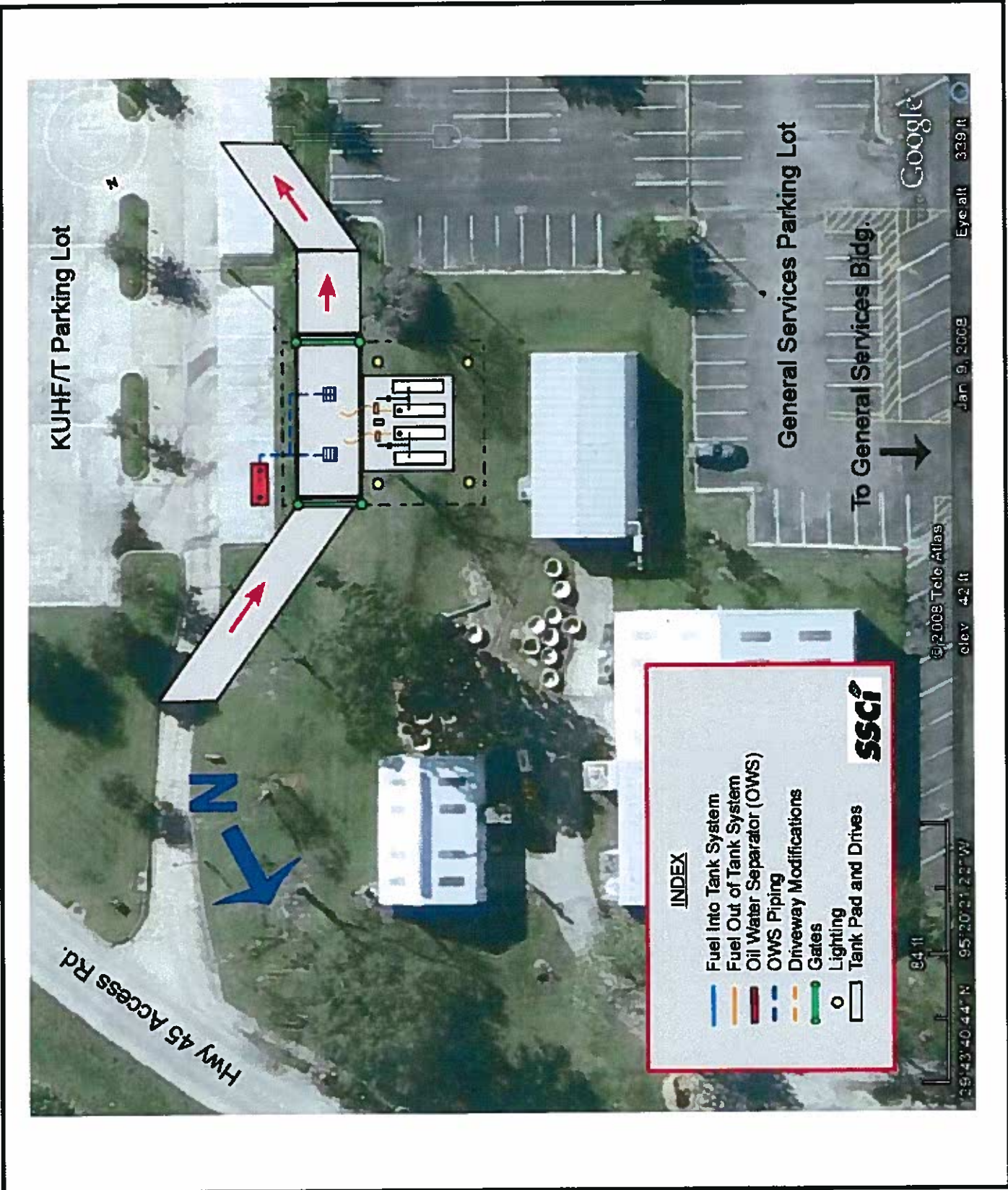
Storage of fuel on campus will permit us to avoid a situation similar to that during Hurricane Ike, when the University had begun rationing fuel to vehicles and was one day away from depletion. The project site on the periphery of campus has been chosen to minimize visual impact and risk to the campus community.

The fuel tank and dispensing area will be screened from public view by oleanders.





Location Plan



KUHFT Parking Lot

General Services Parking Lot

To General Services Bldg.

Hwy 45 Access Rd.

**INDEX**

- Fuel Into Tank System
- Fuel Out of Tank System
- Oil Water Separator (OWS)
- OWS Piping
- Driveway Modifications
- Gates
- Lighting
- Tank Pad and Drives



Google

©2008 Tele Atlas    Jan 9, 2008    Eye alt    339 ft  
 84 ft    39°43'40.44" N    95°20'21.22" W    elev    42 ft

**Location Plan**