

204. *Allegro moderato*

p *cresc.* *mf*
p

205. *Larghetto*

f *p*
ff

206. *Andantino*

mf *p* *mf* *p*
cresc. *f* *p*



207. *Andante*

mp *mf*
mf

208. *Waltz tempo*

f

p *cresc.* *rall.* *f* *p*

a tempo

f *p*

209. *Allegro moderato*

f *pesante* *p*

mf *cresc.*

f *p*

▨ ▨ ▨ The next three melodies include chromatic passing notes.

210. *Moderato con moto*

f

211. *Andante con moto*

p *cresc.*
f *p*

212. *Allegro non troppo*

mf *p* *f*
p



213. *Lilting*

p *f*

214. *Ben ritmico*

mf *f*
p

▨ ▨ ▨ The next three melodies, in the major mode, move through the dominant.

220. *Allegretto grazioso*

mf *f*
mf

221. *Fanfare*

f 3
p *f*
3 3 3

222. *Allegro assai*

p e staccato *cresc.*
f
più f



223. *Allegro e ben marcato*

Musical score for exercise 223, *Allegro e ben marcato*. The piece is in 2/4 time and F# major. It consists of three staves of music. The first staff begins with a forte (*f*) dynamic. The second staff features a piano (*p*) dynamic. The third staff returns to a forte (*f*) dynamic and concludes with a double bar line.

224. *Allegro gioviale*

Musical score for exercise 224, *Allegro gioviale*. The piece is in 2/4 time and Bb major. It consists of two staves of music. The first staff begins with a mezzo-forte (*mf*) dynamic and includes a forte (*f*) dynamic later in the piece. The second staff concludes with a double bar line.

225. *Andantino*

Musical score for exercise 225, *Andantino*. The piece is in 4/4 time and Bb major. It consists of three staves of music. The first staff begins with a forte (*f*) dynamic. The second staff features a mezzo-piano (*mp*) dynamic. The third staff includes a *rit.* (ritardando) marking and concludes with a double bar line.

226. *Allegro moderato*

Musical score for exercise 226, *Allegro moderato*. The piece is in 4/4 time and Bb major. It consists of two staves of music in bass clef. The first staff begins with a forte (*f*) dynamic. The second staff includes a *Fine* marking and a *più forte* dynamic marking, concluding with a double bar line.

p subito *D. C. al Fine*

227. Minuet

f 1. 2. *p* *f*

228. Modéré

p *pp* *mf* *p*

229. Allegro gioviale

mf *p* *mf* *p* *f* *ff* *p* *mf* *p* *mf* *f* *pp*

MELODIES ■ SECTION III

To be used with Section III of all other chapters

Chromatic alterations are used with increasing frequency in melodies of this section. Some indicate modulation; some are factors in secondary dominant harmonies; others are melodic embellishments. Within these melodies there is an increasing diver-

sity of rhythms, intervals, phrase structures, and musical styles.

The material of Section III can readily be correlated with the study of chromatic harmony.

■ ■ ■ Skips larger than one octave are found in the next four melodies.

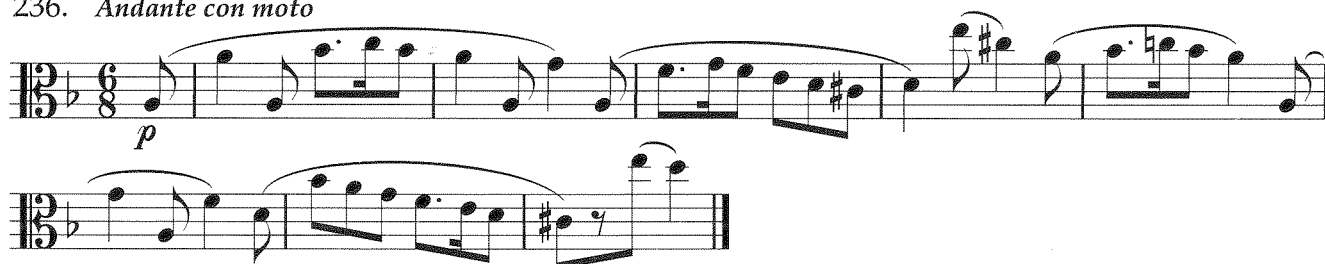
234. *Allegro*



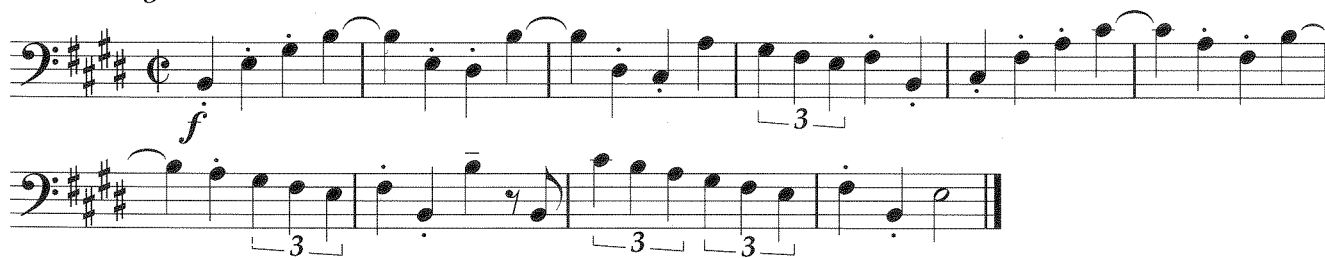
235. *Allegro moderato*



236. *Andante con moto*



237. *Allegro deciso*



238. *Allegro con brio*

mf *f* *p*

239. *Andante ed espressivo*

p 3

240. *Largo e mesto*

p *cresc.* *f* *p*

241. *Lively*

mf *f*

242. *Larghetto*

p *mf*
dim. *p*

243. *Mit Kraft*

f

244. *Allegro gioviale*

mf

245. *Valse (in one)*

f
p (f) 1. 2.

246. *Allegro grazioso*

p

264. *Allegro deciso*

f *p* *f*
p *più p* *f*

265. *Briskly*

mf staccato
cresc. poco a poco
ff

▨ ▨ ▨ Secondary dominants are outlined in the next five melodies.

266. *Energetic*

f

267. *Andante con moto*

p

268. *Allegro*

Two staves of music in bass clef, 2/4 time signature, key of B-flat major. The first staff begins with a dynamic marking of *f*. The music consists of eighth and sixteenth notes with various phrasings and slurs.

269. *Sehr rasch*

Two staves of music in bass clef, 9/8 time signature, key of D major. The first staff begins with a dynamic marking of *mf* and ends with *p*. The second staff begins with *cresc.* and *f*. The music is characterized by rapid sixteenth-note passages.

270. *Allegretto*

Two staves of music in bass clef, 6/8 time signature, key of B-flat major. The first staff begins with a dynamic marking of *f* and ends with *p*. The second staff continues the melodic line. The music features eighth and sixteenth notes.

271. *Innig*

Two staves of music in bass clef, 3/4 time signature, key of D major. The first staff begins with a dynamic marking of *p*, followed by *cresc.* and *mf*. The second staff begins with *p*, followed by *cresc.* and *f*, and ends with *p*. The music consists of eighth and sixteenth notes with expressive phrasings.

272. Valse

273. Ziemlich bewegt

274. Allegretto

▨ ▨ ▨ The meters $\frac{5}{8}$ and $\frac{5}{4}$ are introduced in the next five melodies.

275. Allegro

276. Andantino