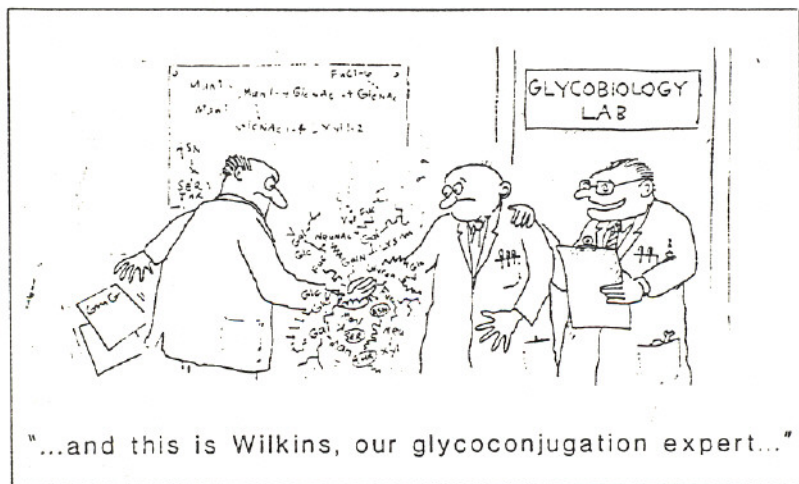
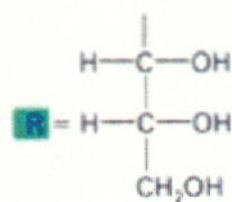
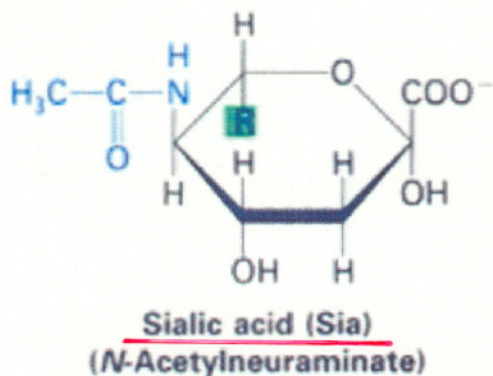
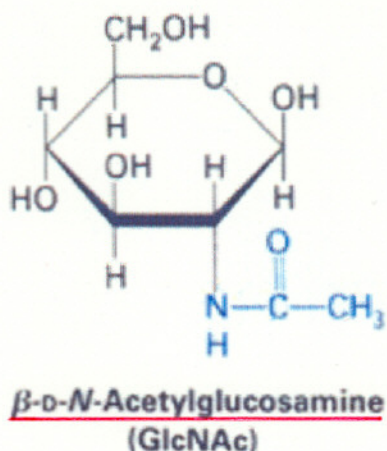
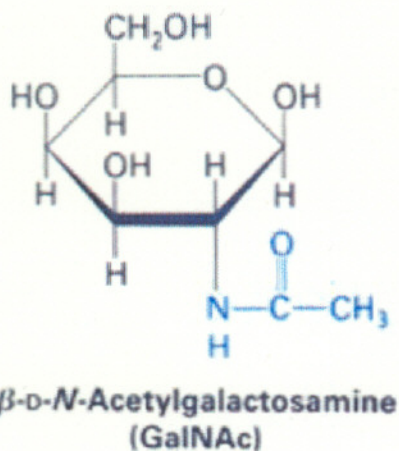
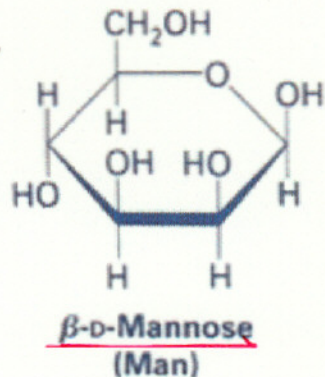
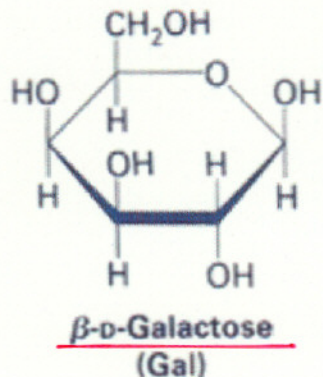
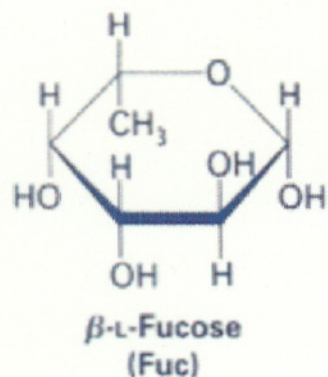


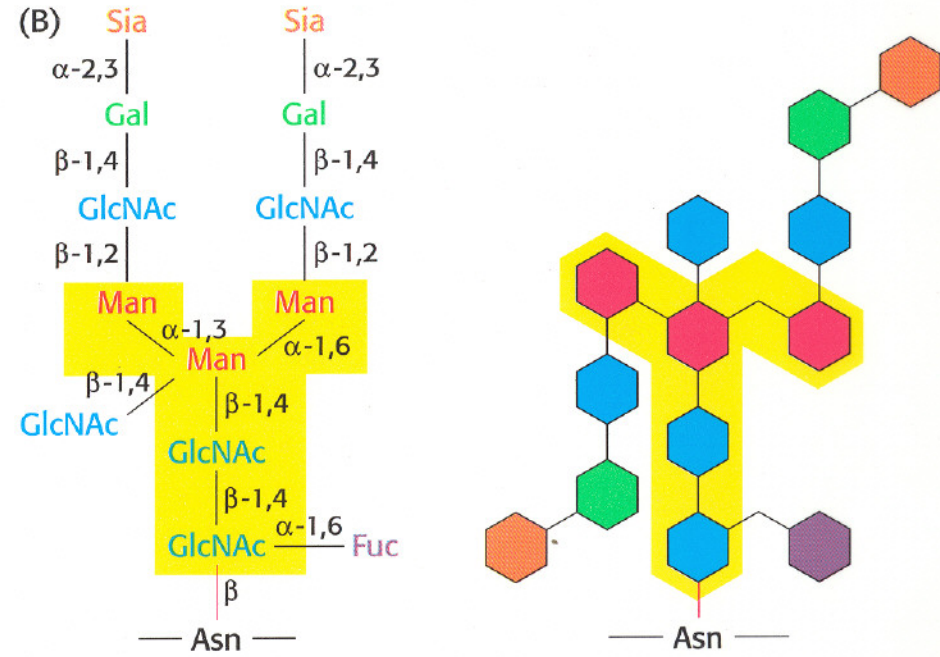
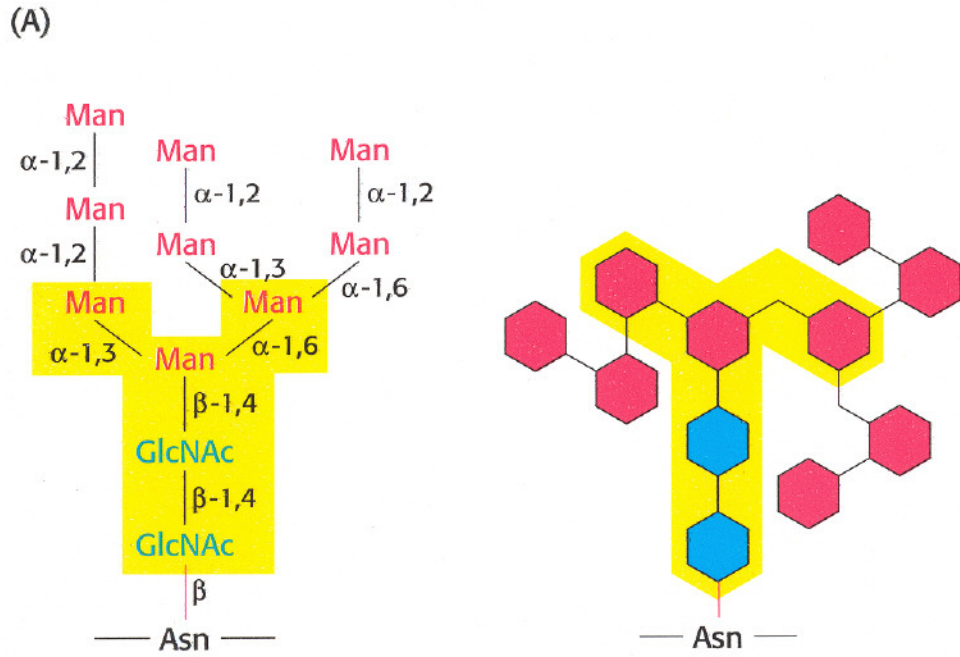
# GLYCOPROTEINS (chapter 11)





Sugar residues commonly found in glycoproteins

# Glycoproteins



High-mannose oligosaccharide unit  
attached to an asparagine  
residue of a glycoprotein

Complex-type oligosaccharide unit

Does not  
bind

Binds to receptor on  
liver cell and is  
internalized

Sia

Gal

GlcNAc

Core sugars

Protein

Sialoglycoprotein

Gal

GlcNAc

Core sugars

Protein

Asialoglycoprotein





STRUCTURES OF A, B, AND O OLIGOSACCHARIDE ANTIGENS

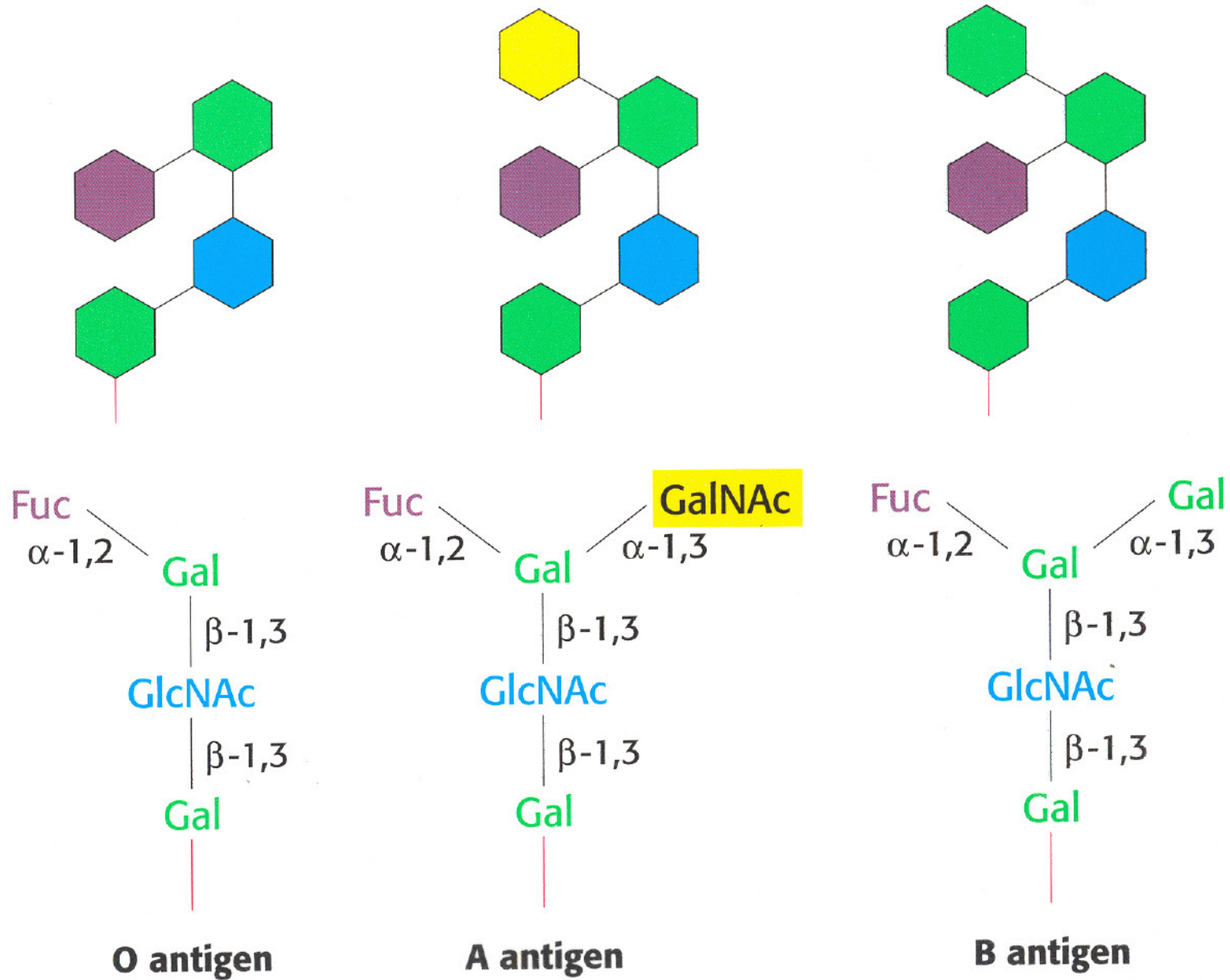
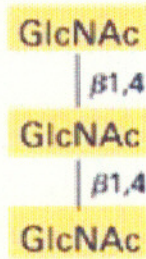
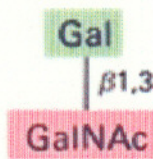


Figure 11-17  
 Stryer, Tymoczko, & Berg, BIOCHEMISTRY, Fifth Edition.  
 Copyright © 2002 by W. H. Freeman and Company.

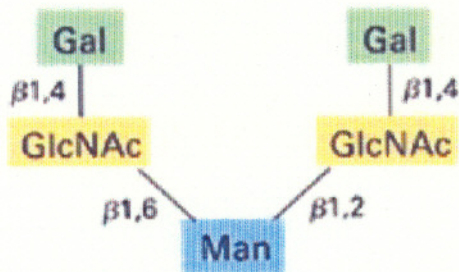
Lectins : carbohydrate-binding proteins  
in plants



**Binds to wheat germ agglutinin**



**Binds to peanut lectin**



**Binds to phytohemagglutinin**

Sugar units recognised by wheat germ agglutinin,  
peanut lectin, and phytohemagglutinin.