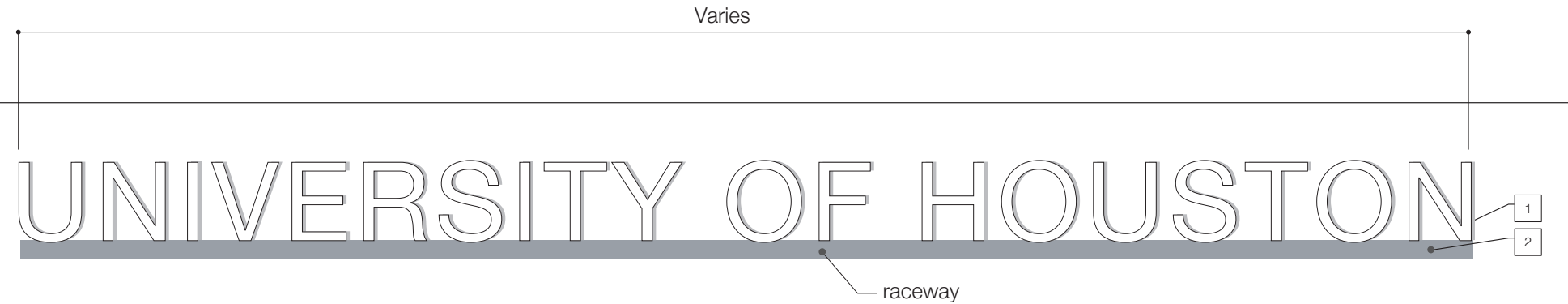
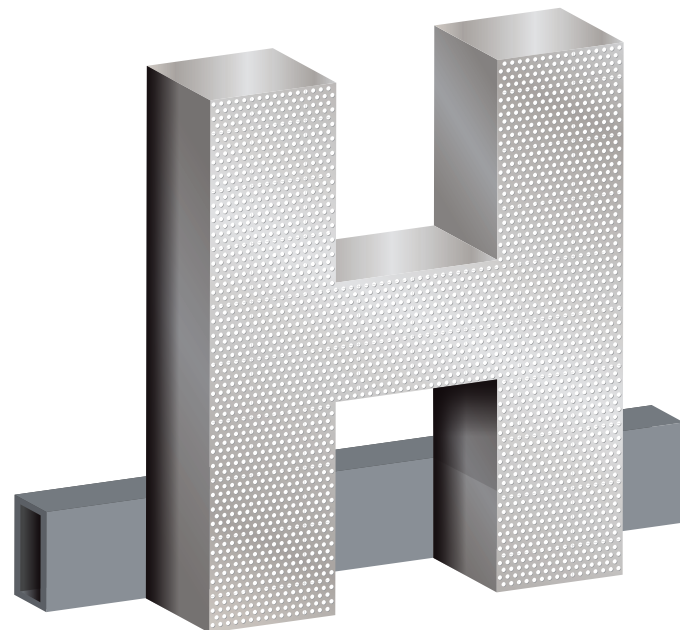


# UNIVERSITY OF HOUSTON

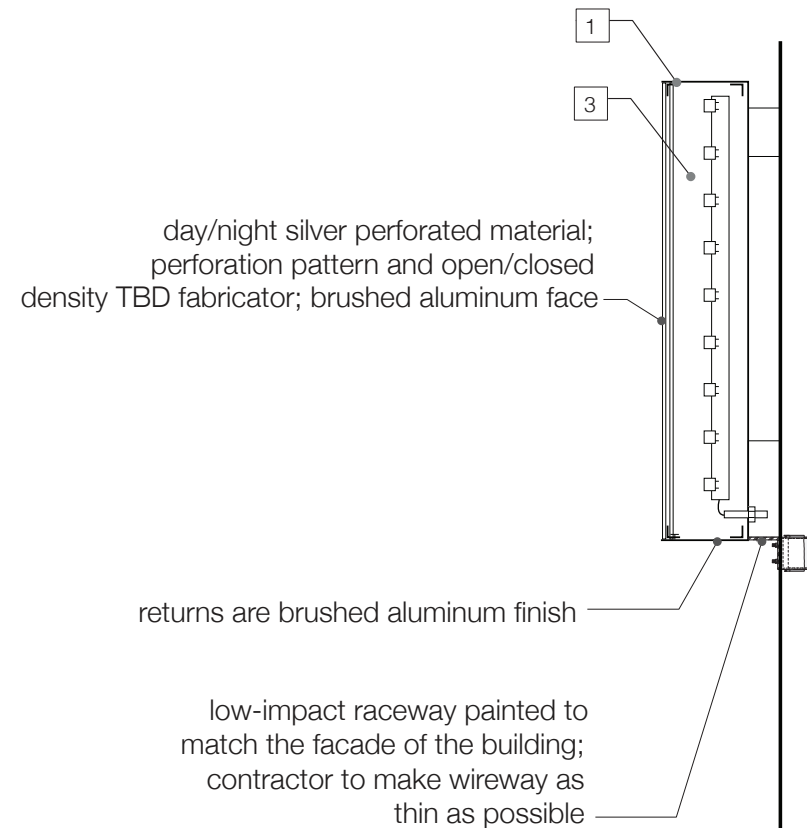
Helvetica Neue Regular  
24" height = 3" stroke width



1 **SIGN TYPE W**- University Name Internally Illuminated



2 **DETAIL - Axonometric Letter**



3 **DETAIL - Letterform Section**

**OWNER/DESIGNER TO PROVIDE:**

- Digital files for all artwork (Adobe Illustrator CC)

**CONTRACTOR TO PROVIDE:**

- Shop drawings
- Face layouts for all signs
- Location Plan as provided by Architect/Designer
- Engineering calculations and sealed drawings
- Paint and Porcelain samples on aluminum/steel, 4x6" (Quantity 3)
- In production review
- Contractor to verify field conditions prior to fabrication

**NOTE:**

**Dimensions: Height and width may vary on location. Signs are for use at campus perimeter locations only, typically at parking garages visible from surrounding highways or major thoroughfares.**

**Final sizes and locations of signs require approval of University Architect and the Campus Facilities Planning Committee.**

1. Fabricated aluminum letterforms with perforated brushed aluminum face. Internal illumination with white LEDs, 4000K and even illumination. No hot spots. Perforated face allows for aluminum finish during the day and face-lit illumination at night. Brushed aluminum returns and backside.
2. Attach letterforms to a raceway to minimize the amount of connections to the building. Paint raceway to match the facade of the building and to be as low-impact as possible.
3. Paint interior of sign cabinet, color white.
4. Power requirements are to be specified by the Contractor. Power to enter sign cabinet from back of sign cabinet. All electrical transformers to be remote and hidden from view. Contractor to coordinate power to sign with all appropriate trades.
5. UH Name mechanically secured to pre-cast concrete garage wall. Exact mounting method and connections TBD by Contractor. Paint any exposed conduit to match color of the wall.
6. Fonts: Helvetica Neue Regular



**CAMPUS PERIMETER ILLUMINATED IDENTIFICATION AS INSTALLED AT THE ELGIN STREET GARAGE.**  
Example shown does not reflect correct typography

ISSUE	DATE
REFERENCE SET	04.08.2022
REVISED	09.08.2023

