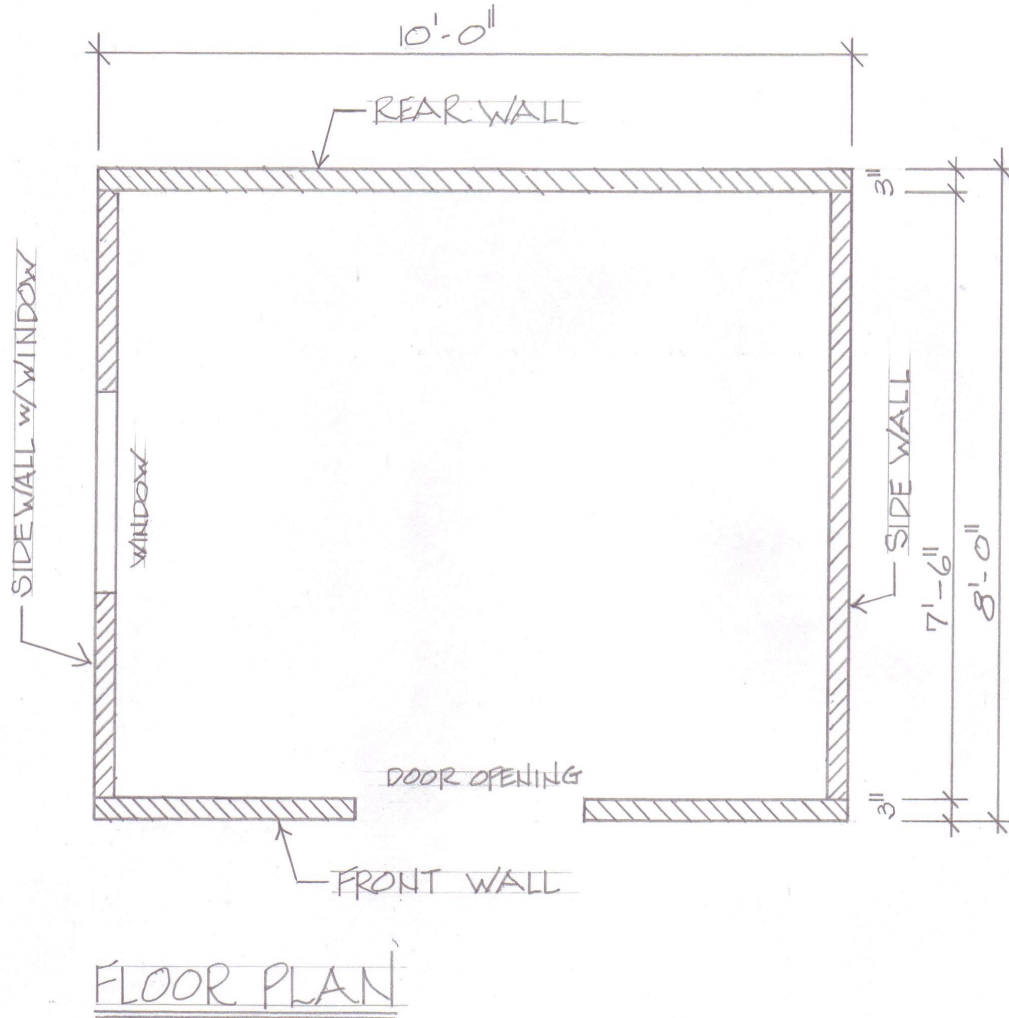
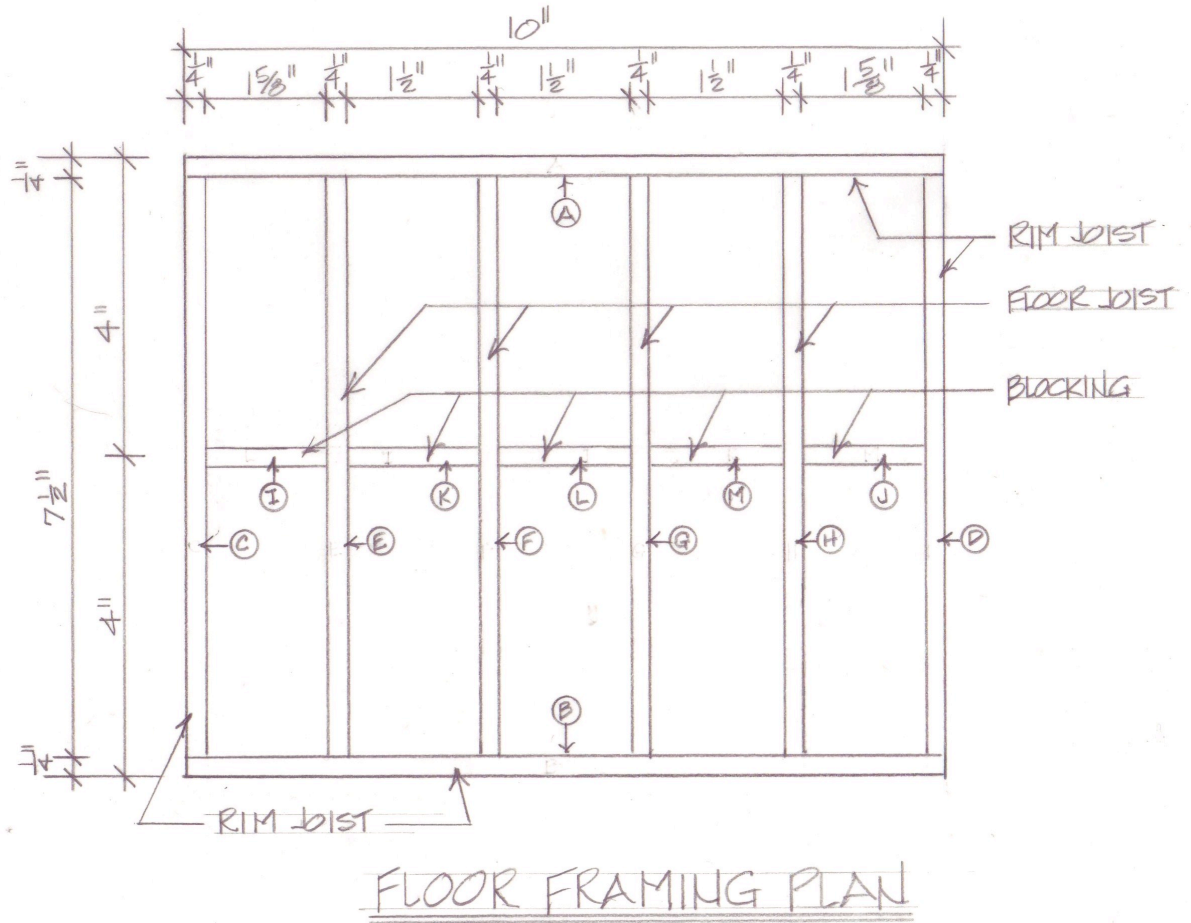


Elevations: Section A
Brick Dwelling: Floor Plan
Page -1- of -10-



Elevations: Section A
Brick Dwelling: Floor Framing Plan
 Page -2- of -10-



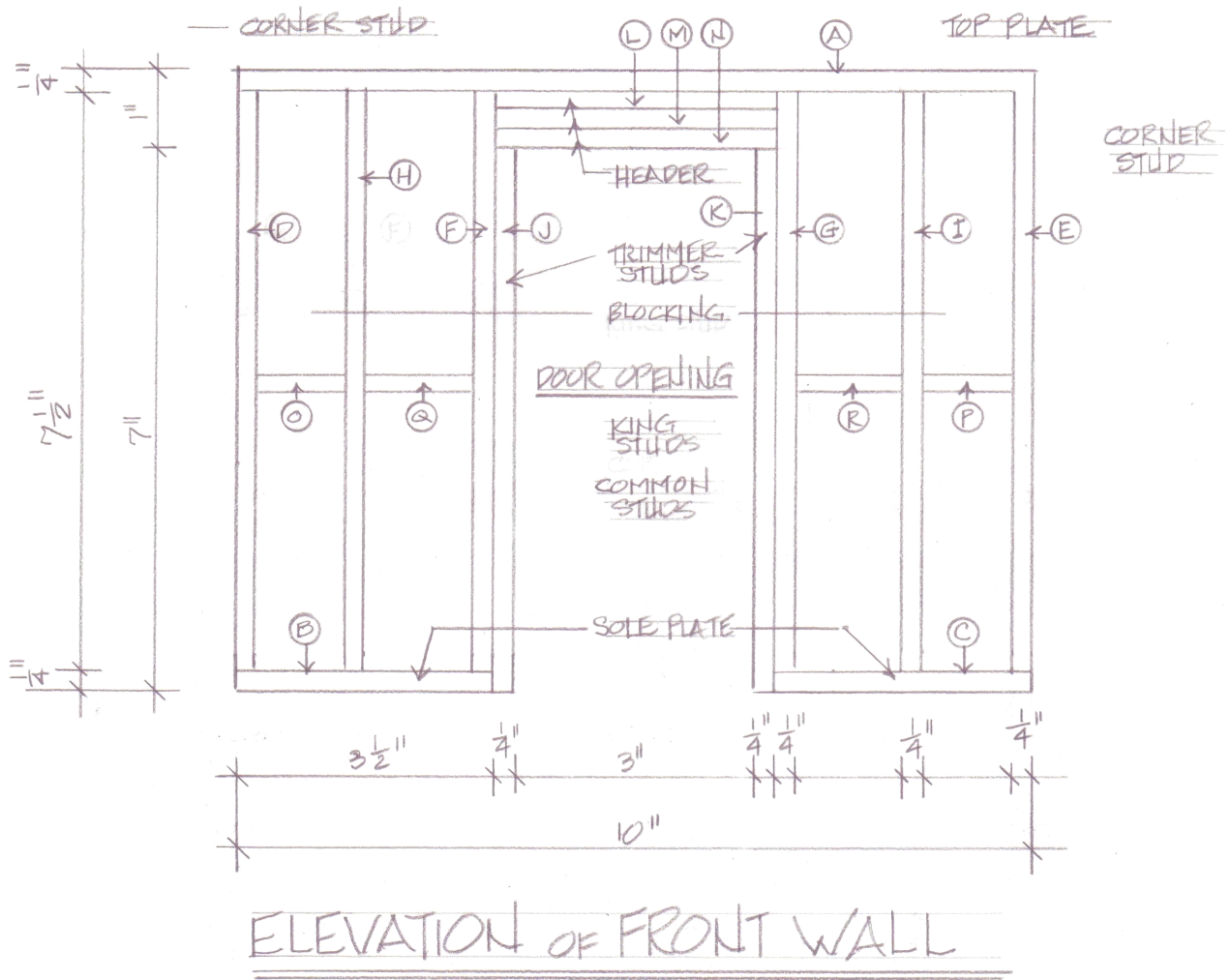
Cutting List: Floor Framing Plan

General: All pieces are cut from 1/4' x 1/4" Basswood. Quantities are for only one section.

Quantity	Dimensions	Label	Description
2 each	10"	A, B	Rim Joist
2 each	7 1/2"	C, D	Rim Joist
4 each	7 1/2"	E,F,G,H	Floor Joist
2 each	1 5/8"	I, J	Blocking
3 each	1 3/4"	K, L, M	Blocking

Elevations: Section A

Brick Dwelling: Front Wall Page -3- of -10-

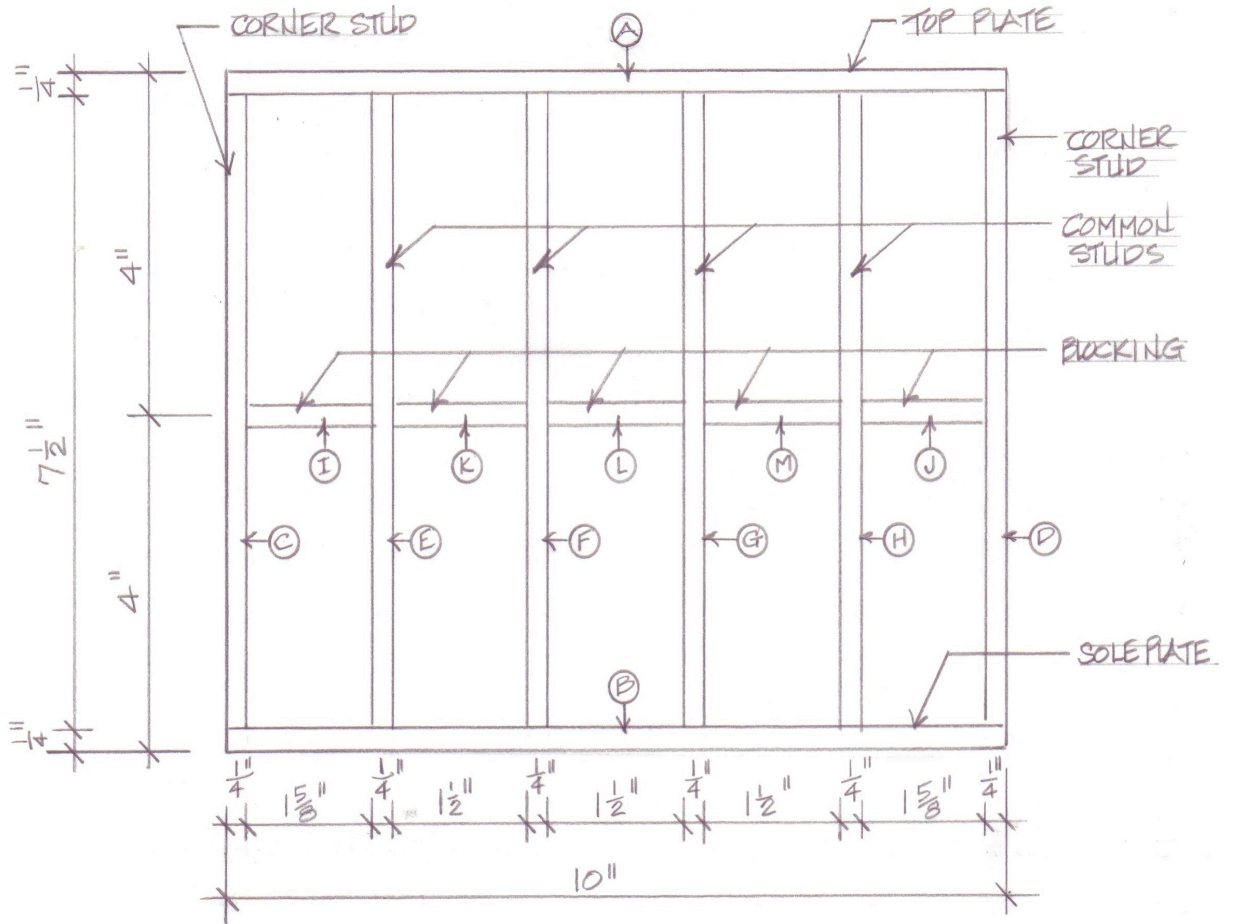


Cutting List: Front Wall Note: All pieces are cut from 1/4' x 1/4" Basswood.

Quantity	Dimensions	Label	Description
1 each	10"	A	Top Plate
2 each	3 1/4"	B, C	Sole Plate
2 each	7 1/2"	D, E	Corner Studs
2 each	7 1/2"	F, G	King Studs
2 each	7 1/2"	H, I	Common Studs
2 each	7"	J, K	Trimmer Studs
3 each	3 1/2"	L, M, N	Headers
2 each	1 1/8"	O, P	Blocking

Elevations: Section A

Brick Dwelling: Rear Wall Page -4- of -10-



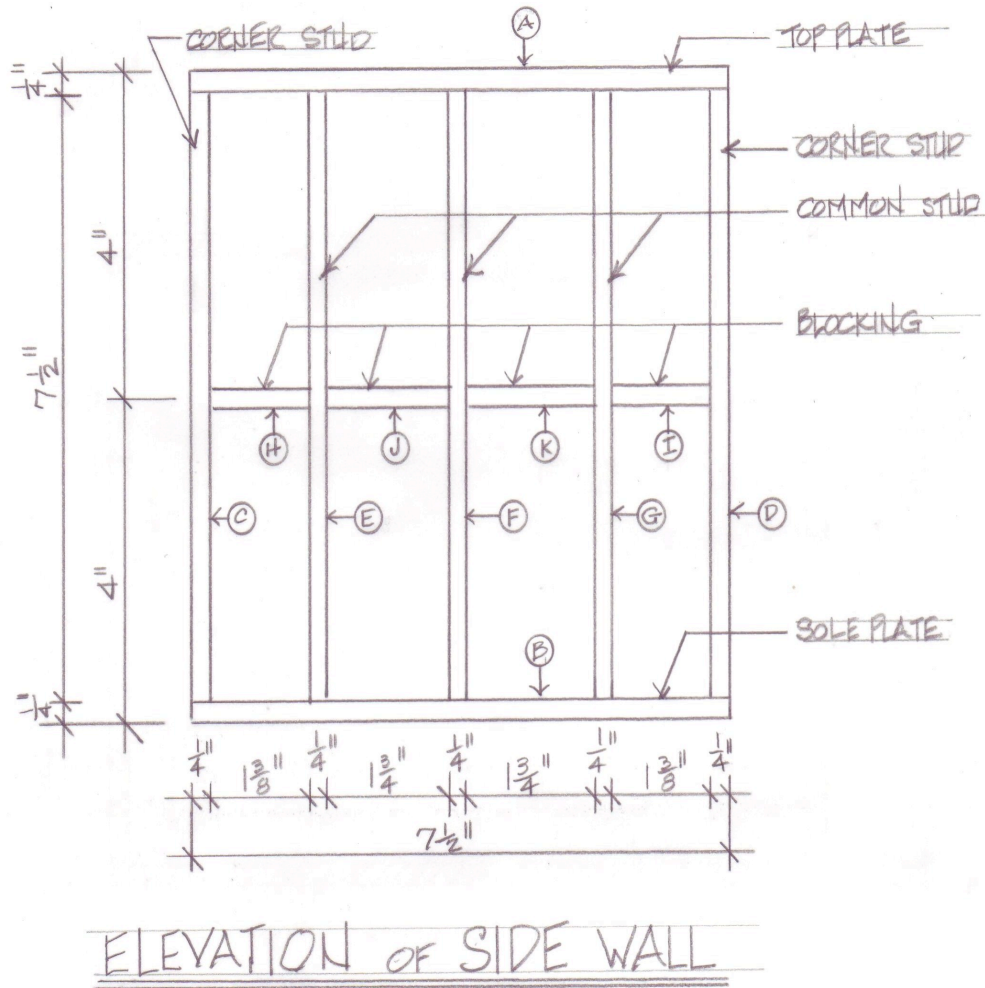
ELEVATION OF REAR WALL

Cutting List: Rear Wall

Note: All pieces are cut from 1/4' x 1/4" Basswood.

Quantity	Dimensions	Label	Description
1 each	10"	A	Top Plate
1 each	10"	B	Sole Plate
2 each	7 1/2"	C, D	Corner Studs

Elevations: Section A



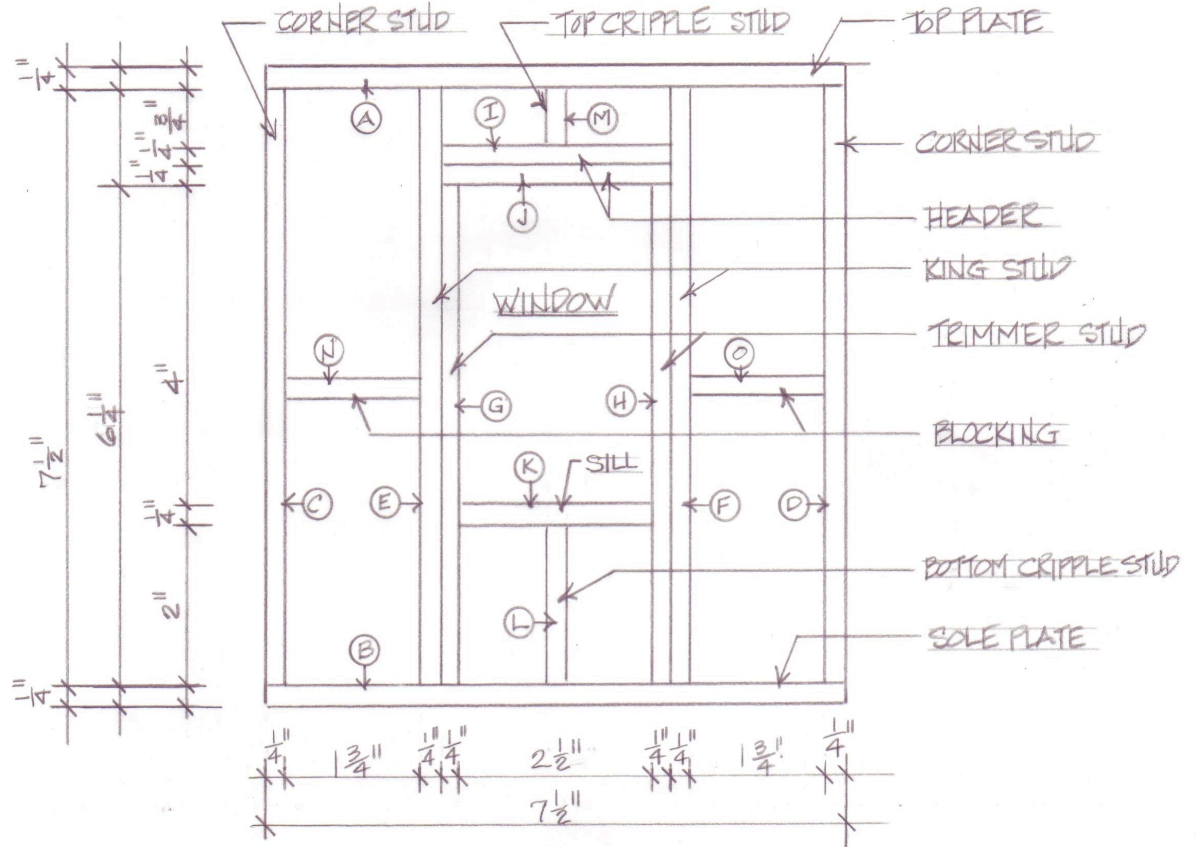
Cutting List: Side Wall without Window

Note: All pieces are cut from 1/4" x 1/4" Basswood.

Quantity	Dimensions	Label	Description
1 each	7 1/2"	A	Top Plate
1 each	7 1/2"	B	Sole Plate
2 each	7 1/2"	C, D	Corner Studs
3 each	7 1/2"	E, F, G	Common Studs
2 each	1 3/8"	H, I	Blocking

Elevations: Section A

Brick Dwelling: Side Wall with Window Page -6- of -10-



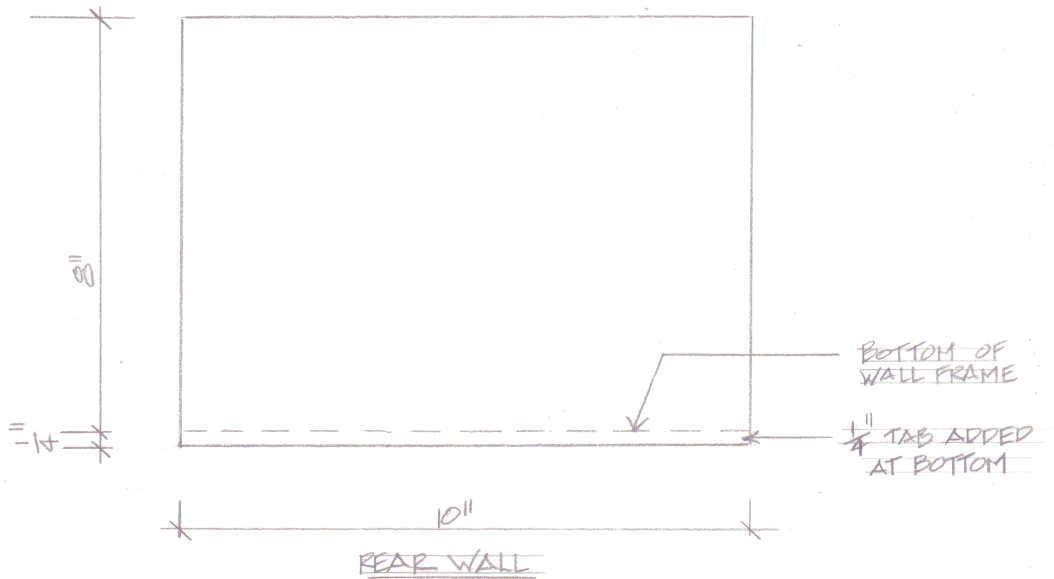
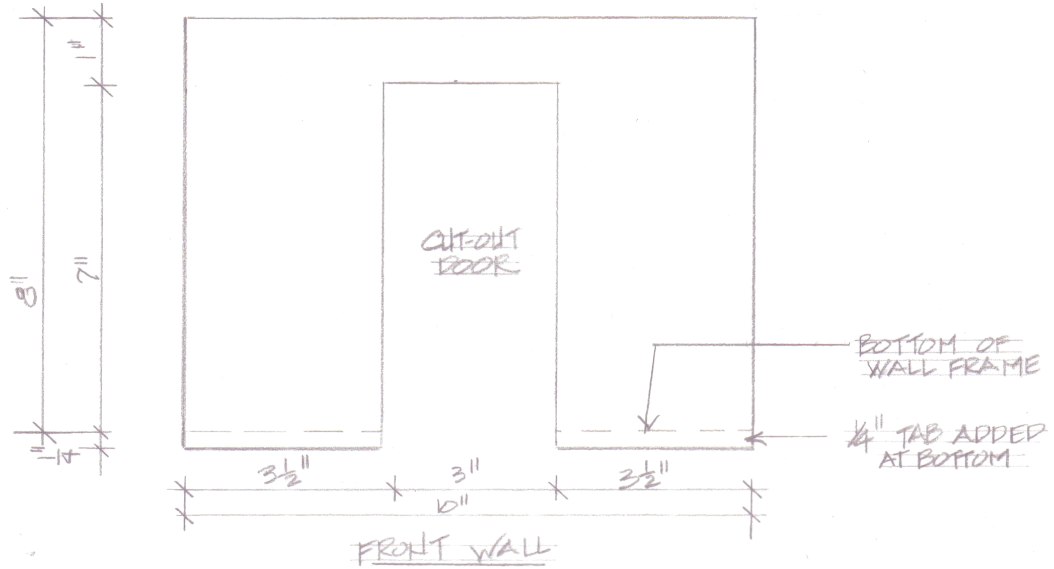
ELEVATION OF SIDE WALL w/ WINDOW

Cutting List: Side Wall with Window Note: All pieces are cut from 1/4' x 1/4" Basswood.

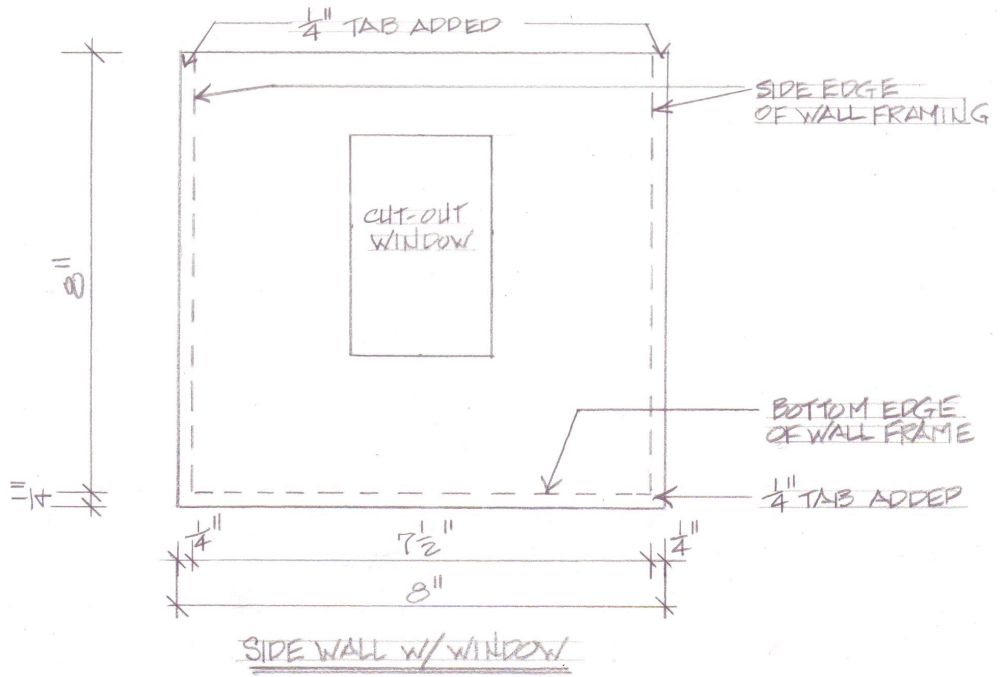
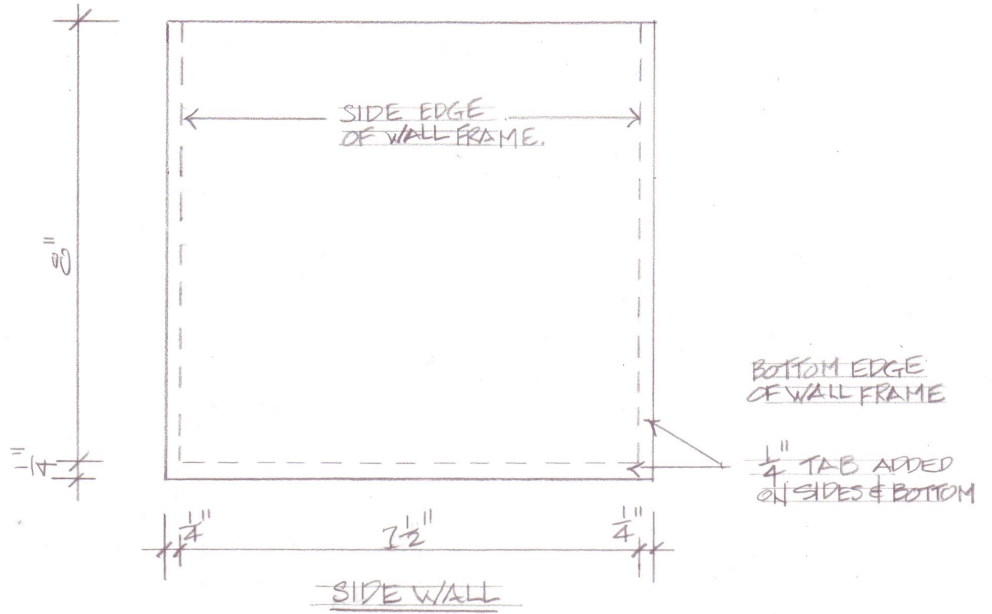
Quantity	Dimensions	Label	Description
1 each	7 1/2"	A	Top Plate
1 each	7 1/2"	B	Sole Plate
2 each	7 1/2"	C, D	Corner Studs
2 each	7 1/2"	E, F	King Studs
2 each	6 1/4"	G, H	Trimmer Studs
2 each	3"	I, J	Headers
1 each	2 1/2"	K	Sill

Elevations: Section A

WALL SHEATHING PATTERN



WALL SHEATHING PATTERN



Elevations: Section A

Brick Dwelling: Diagram of Roof Framing Page -9- of -10-

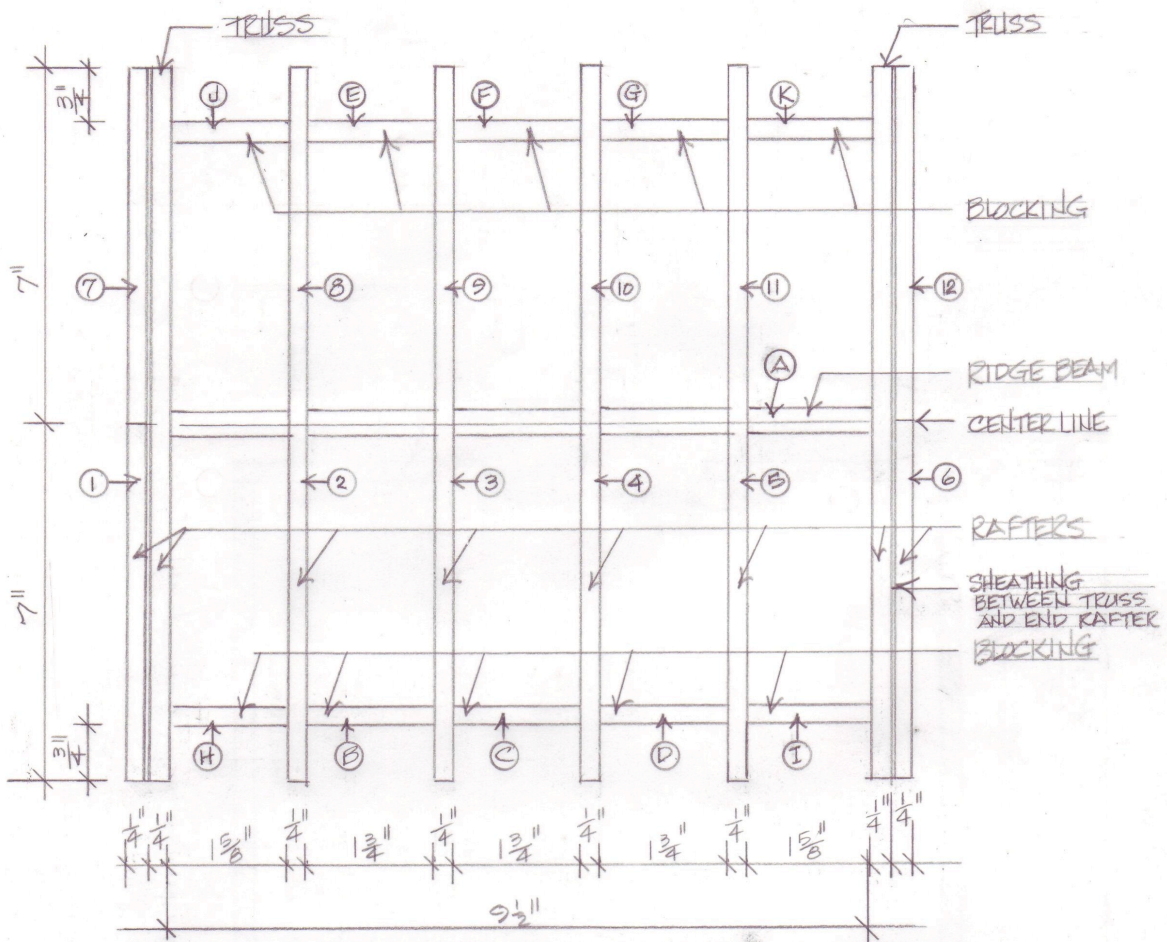


DIAGRAM OF ROOF FRAMING

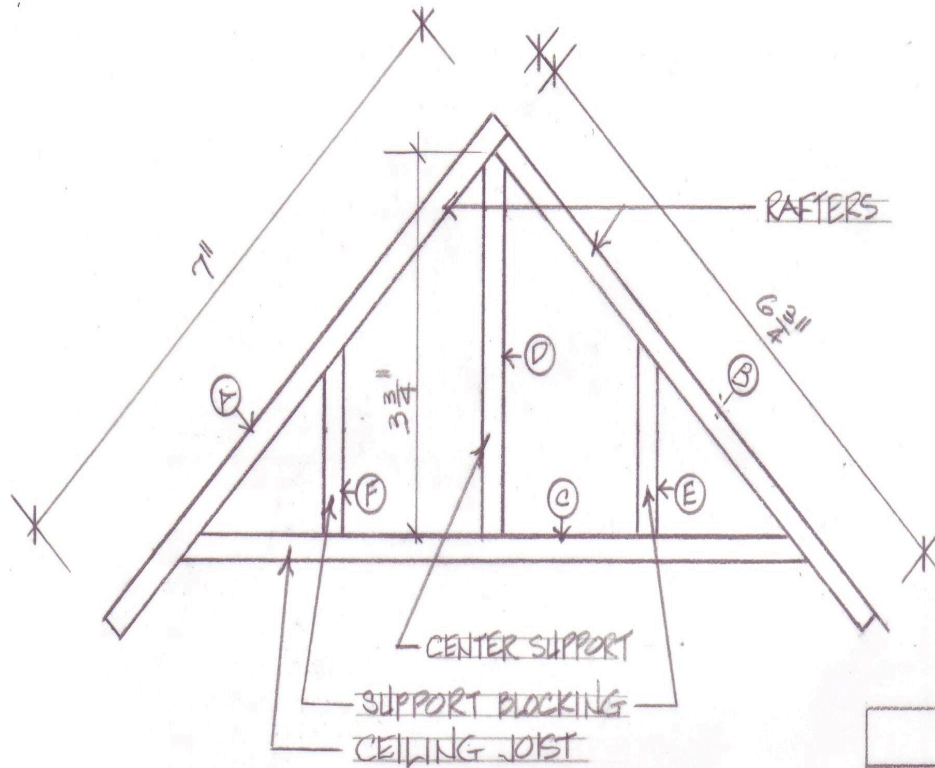
Cutting List: Roof Framing

Note: All pieces are cut from 1/4" x 1/4" Basswood.

Quantity	Dimensions	Label	Description
1 each	9 1/2"	A	Ridge Beam
1 each			
16 each	6 3/4"	1 -16	Rafter
6 each	1 3/4"	B,C,D,E,F,G	Blocking
		G	
4 each	1 5/8"	H, I, J, K	Blocking

Elevations: Section A

Brick Dwelling: Details of Roof Truss Page -10- of -10-



DETAIL OF ROOF TRUSS
(2 EACH)

ROOF	
ANGLE =	45°
SLOPE =	$\frac{4'' \text{ RISE}}{4'' \text{ RUN}}$
PITCH =	$\frac{4'' \text{ RISE}}{8'' \text{ SPAN}}$

Cutting List: Truss

Note: All pieces are cut from 1/4' x 1/4' Basswood.

Quantity	Dimensions	Label	Description
1 each	7"	A	Rafter
1 each	6 3/4"	B	Rafter
1 each	8"	C	Ceiling Joist
1 each	3 3/4"	D	Center Support
2 each	1 7/8"	E, F	Blocking