

Health Biomedical Project

\$538,000

Professional Precinct

\$759,000

Cougar Walk/Stadium Garage

\$757,000

# Jennifer Steinkamp

Jennifer is interested, busy working on other projects but did not say our timeline was an issue, affordability may be. She does however show work on monitors, so playing a looped video on a more affordable TV may be an option. LED screens are VERY costly, projection is more affordable but these Sanyo projectors (15,000 lumens, \$18,000.00 each) need to be vented.

*Oculus Sinister (left eye)*, 2008

Dimensions: size variable, approximately 10 foot diameter x 8 feet high

From an exhibition at the Getty



## *The Sky is Falling*

2009

Dimensions: 900 x 486 pixels, 44.5 x 24 feet

Part of the Collection: Wells Fargo, Charlotte, NC

Description:

*The Sky is Falling* is a playful interaction with the children who visit the Wells Fargo Cultural Campus in Charlotte, North Carolina. Children create art which becomes part of the piece and the architecture.





## *Hollywood and Vine*

2009-10

Dimensions: 3 feet wide x 20 feet high, 8 LED columns.

Part of the collection: Legacy partners

Description:

*Hollywood and Vine* is a series of eight animations. Each animation references a specific star on a block of the Vine section of the Walk of Fame north of Hollywood Boulevard



*Florence Nightingale*

2010

Dimensions: 15 x 5.5 feet

Part of the Collection: Cedars-Sinai Medical Center, Los Angeles, California

Description:

A collection of flowers used in medicine, in various ways were selected in honor of Florence Nightingale.





*The River of No Return, 2004*

LED screen 52 x 3 feet

Equipment: Newton Technologies LED Displays, Gwangju, and 1 computer.

[Gwangju Biennale](#), Gwangju, Korea.



# Kendall Buster

Kendall is very interested. Our budget for Biomedical works for a substantial piece of art.



## **VESSEL FIELD, 2010**

*Vessel Field* is a configuration of vessel-like forms suspended on stainless steel aircraft cable in the glass roof atrium of the renovated Gilman Hall at Johns Hopkins University in Baltimore, Maryland. The forms are constructed out of industrially powder-coated steel hollow tube covered in a white semi-transparent shade cloth. \$350,000.00 budget



## **RESONANCE, 2010**

*Resonance* is a site-specific sculpture commissioned for The Frick Chemistry Lab at Princeton University. It was designed to converse with the particulars of the long and narrow sky-lit atrium space. The sculpture consists of six groupings of ovoid shaped forms suspended on stainless steel aircraft cable and attached to the structural steel beams of the building. Built with lightweight industrially powder-coated steel frames and covered in semi-transparent outdoor shade-cloth





**DOUBLE CHALICE, 1996**

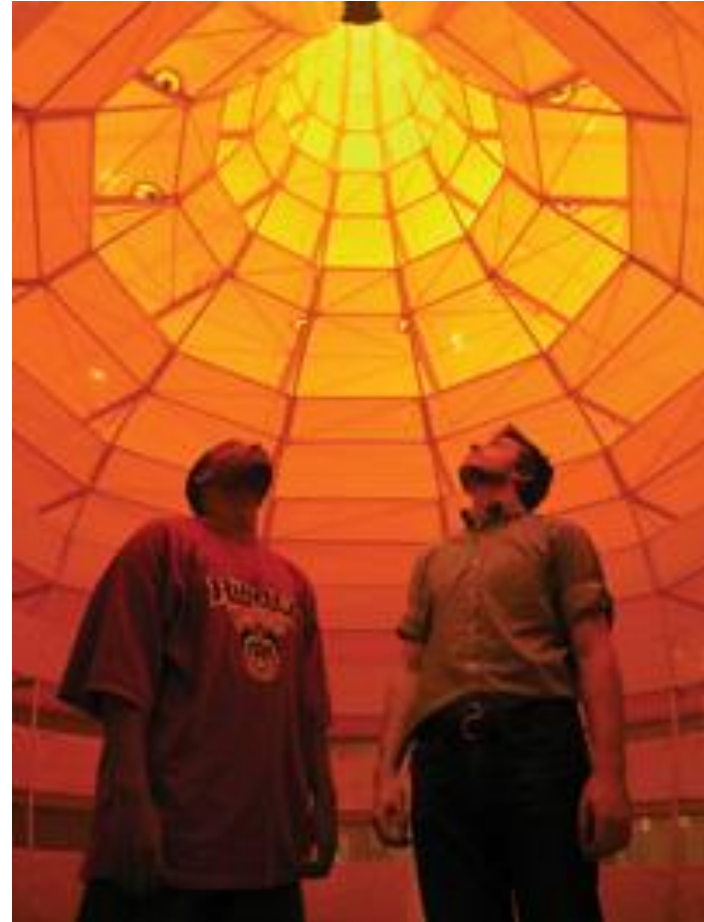


*Yellow Highrise, 2005*

Houston Center for Contemporary Craft, Houston, TX

shadecloth, steel

12 feet x 12 feet x 12 feet





*Garden Snare (Shade House), 2005*

Laumier Sculpture Park and  
Museum, St. Louis, MO

shadecloth, steel



*New Growth*, 2007  
Boise Art Museum, Boise, ID  
shadecloth, steel

*New Growth/Stratum Model, 2009*  
Suyama Space, Seattle, WA  
poly-carbonate plastic, aircraft cable





*Stratum Pier*, 2010, Indianapolis Museum of Art, Indianapolis, IA  
fiberglass, steel, concrete



# Teresita Fernandez

Very busy and unable to work with us at this time.

# Dan Corson

Interested and available.

I spoke with the conservation manager for *Laser Lawn*, a permanent installation completed in 2007. Lasers are very sensitive to movement and have to be re-calibrated often, computer equipment had to be changed, one laser unit replaced. Location of computer equipment needs to be housed in a climate controlled environment, power surge protection needed, local person trained by artist at installation is essential, warranty issues. His LED system for the trees was far less problematic.





EMPYREAN PASSAGE, created for the City of West Hollywood CA.

Dimensions: 20'x20'x23' on 45' tall poles.

Temporary installation, \$75,000 budget

This project utilizes extremely "green" electroluminescent lighting. The entire sculpture consumes less electricity than a household nightlight and operates on a photo cell.

DIGITAL DIVIDE. The wall separating the Big Blue Bus operations and maintenance facility and Colorado Ave is a kinetic artwork inspired by the sparkling blue ocean and the pulsing and ever-changing skin patterns of the indigenous squid *Loligo opalescens*. Created from glass and a special liquid crystal film, the wall ripples with patterning revealing and obscuring the maintenance facility by switching the glass from opaque to transparent cobalt blue in milliseconds. \$650,000.00



This is a very “green” project utilizing hardly any electricity to operate and fully offset by photo voltaics located on the rooftop. There are 9 different patterns that repeat over a 39 minute cycle.

Emerald Laser Lawn, permanent ,Ft. Lauderdale, \$170,00.00





Special Doppler radar sensors help control the safe use of the lasers in this urban setting. Hidden sensors randomly trigger 12 different sequences and patterns lasting 5-7 minutes each.



# Wim Delvoye

He is interested but traveling at the moment and will return to studio next week. I hope to have more info at our meeting.

*Cloaca New & Improved, 2000-2007*







*Caterpillar # 5, 2002*  
laser-cut corten steel  
Public Art Fund, New York



detail of *Caterpillar* #5





*Chapelle*, 2006

laser-cut corten steel, vitraux

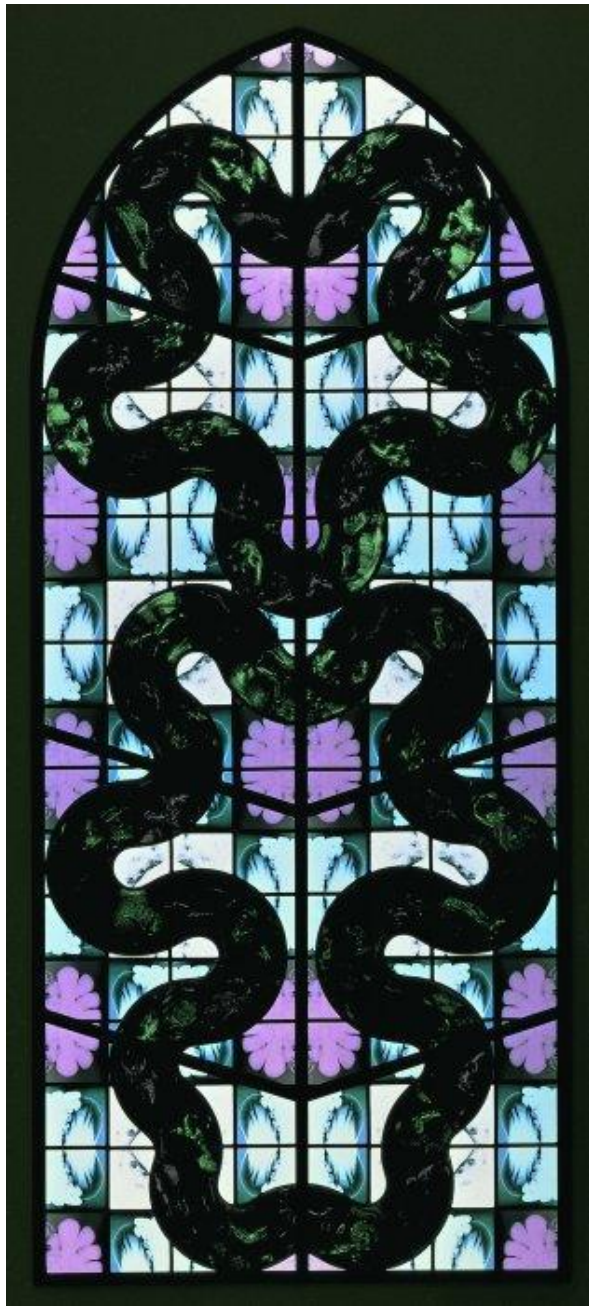
Mudam, Luxembourg







*April*



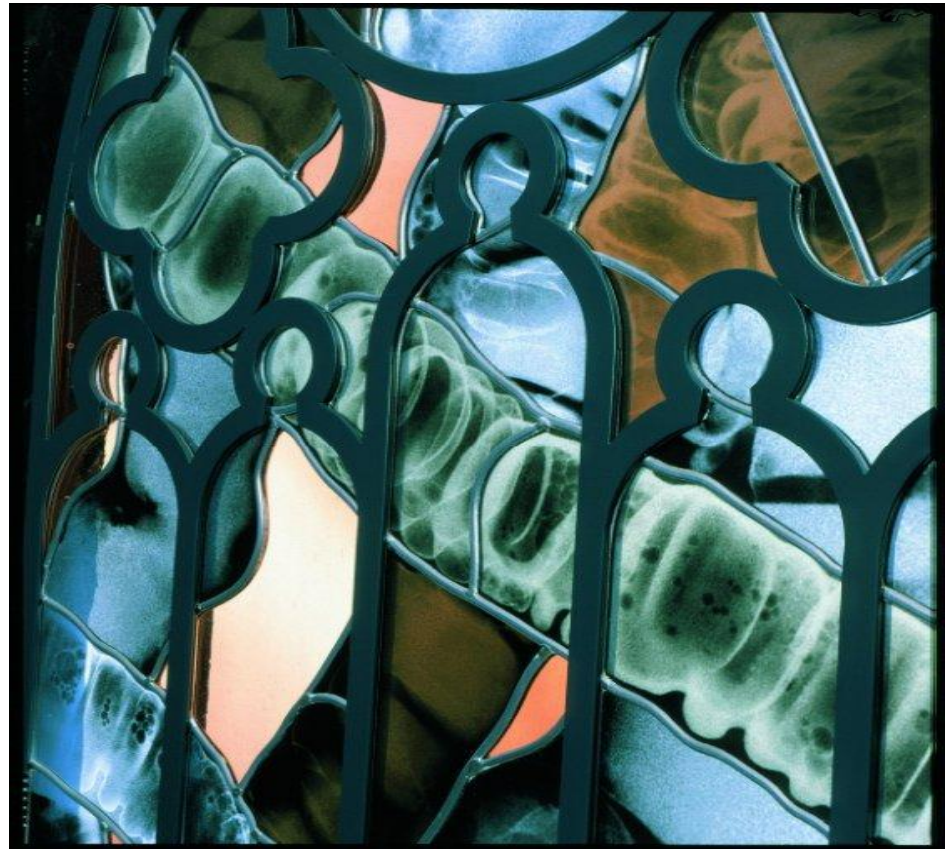
*September detail*

2001

244 x 104 cm

steel, X-rays, lead, glass

collection Katoen Natie, Antwerp



# Tom Otterness

Interested and believes he can work within our budget but may have to focus energy on a central part of the site. Was open to working on a water feature.



*Silver Tower Playground, 2010*

42nd Street between 11th and 12th Avenues, NYC



*Matriculated Nature*, 2007  
Claremont, California







*Coqui*, 2005  
PS 20, Manhattan, New York







*Wild Life, 2010*  
Connell, Washington





*Tornado of Ideas*, 2004  
Texas Tech University, Lubbock, Texas



# Martin Puryear

Waiting to hear back from 2 dealers confirming availability of existing outdoor work.











# Brian Tolle

Very interested and available.



Stringhold, mixed media, 2008, University of Washington,  
\$270,000 budget







Twisted Chimney, brick, 2010, Wales





Irish Hunger Memorial, NY









University at Buffalo, 2007





*Witch Catcher*, mixed media, 25 ft tall, 2003, Public Art Fund, NY



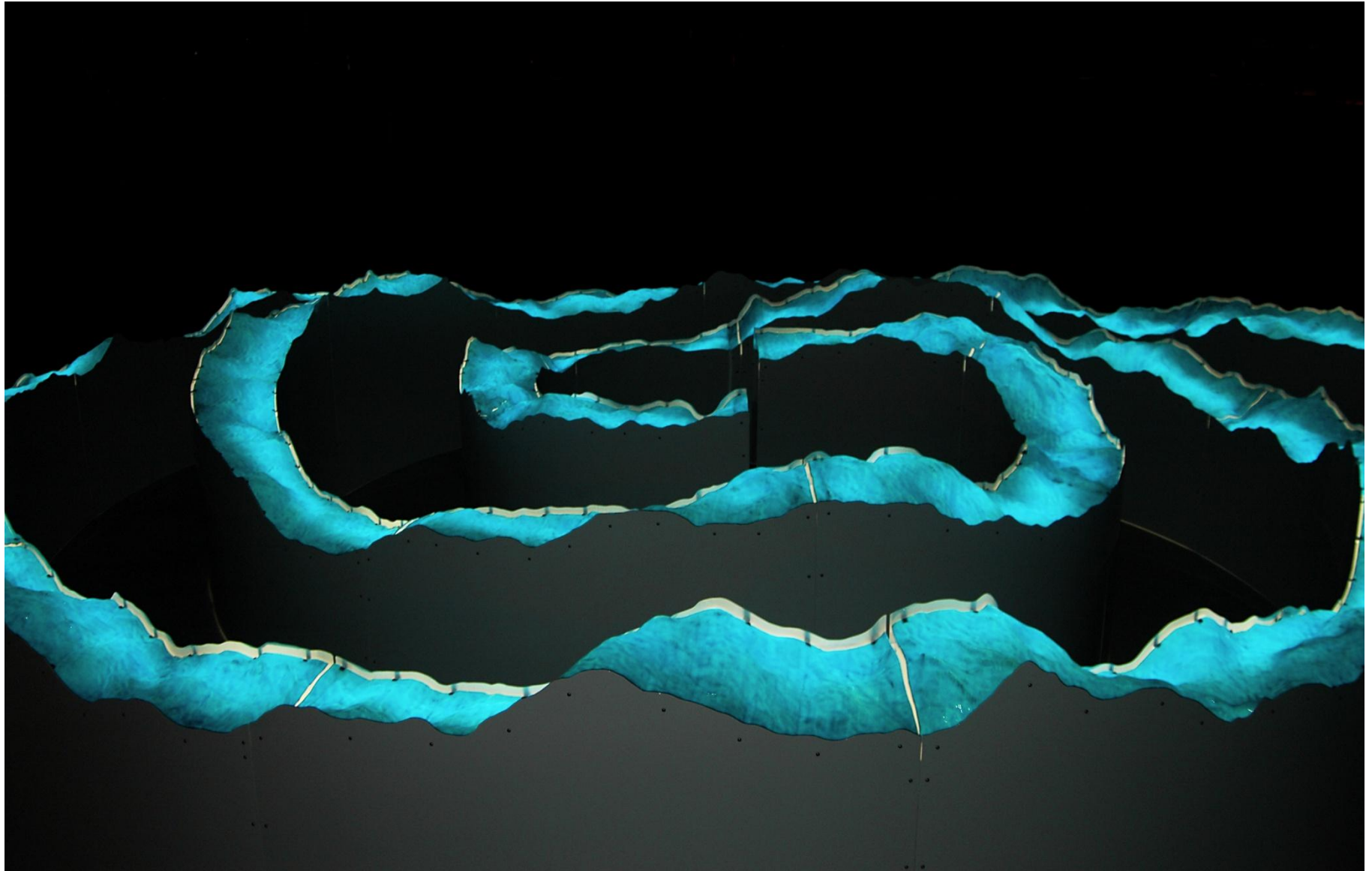


*Tempest*, powder coated aluminum, fiberglass, 30 x 3 ft., 2010,  
\$360,000 budget





*Tempest at night*



# Liam Gillick

Very interested and available.

*Linked Projection*, 2010 steel, glass, 75 x 25 x 11 ft., Forsyth Court, Centene Plaza,  
Clayton, MO





Dynamic Building, Guadalajara, Mexico, 2009





Interior of Dynamic Building



Fairmont Pacific Rim , 2009.  
Running lines of repeated text :  
Lying on top of a building the  
clouds looked no nearer then when  
I was lying on the street





Lufthansa Headquarters, Frankfurt,  
2006, powder coated aluminum text





Home Office, London, 2002-05,  
façade details







Sarah Morris



Lever House, 2006-07  
Public Art fund, NY







Carpet design





Gateway School in Queens, NY



detail of tile for Queens project





*Monaco Reflecting Pools, 2006, Key Biscayne, FL.*





Jim Isermann

MTA, CA, 2006, 459 powder coated aluminum panels and steel uni-strut. overall approximately 14" x 125'



Albright Knox, Buffalo, NY. Vinyl Link Entry Mats), 2004





73 POWDER COATED STEEL AND ALLUMINUM MODULES, LED ILLUMINATION. EACH MODULE  
INSTALLED AT THE UCR GENOMIC BUILDING: INSTITUTE FOR INTEGRATIVE GENOME BIOLOGY,  
2009



5 Pendant Chandelier: Powder coated aluminum, steel and polycarbon. Carpet tile: Wet-dye injection printed tufted nylon and polyurethane backing. UC San Francisco, 2003







Dallas Cowboys Stadium, 2009-10



# Christian Eckart

*Dichroic Hexagonal Perturbation, 2011*

Dichroic glass on aluminum armature

96 x 113 x 38 in.

\$120,000 available





*The Absurd Vehicle*, 2006-2010

Mixed media

120 x 161 x 161 in.

\$600,000 available



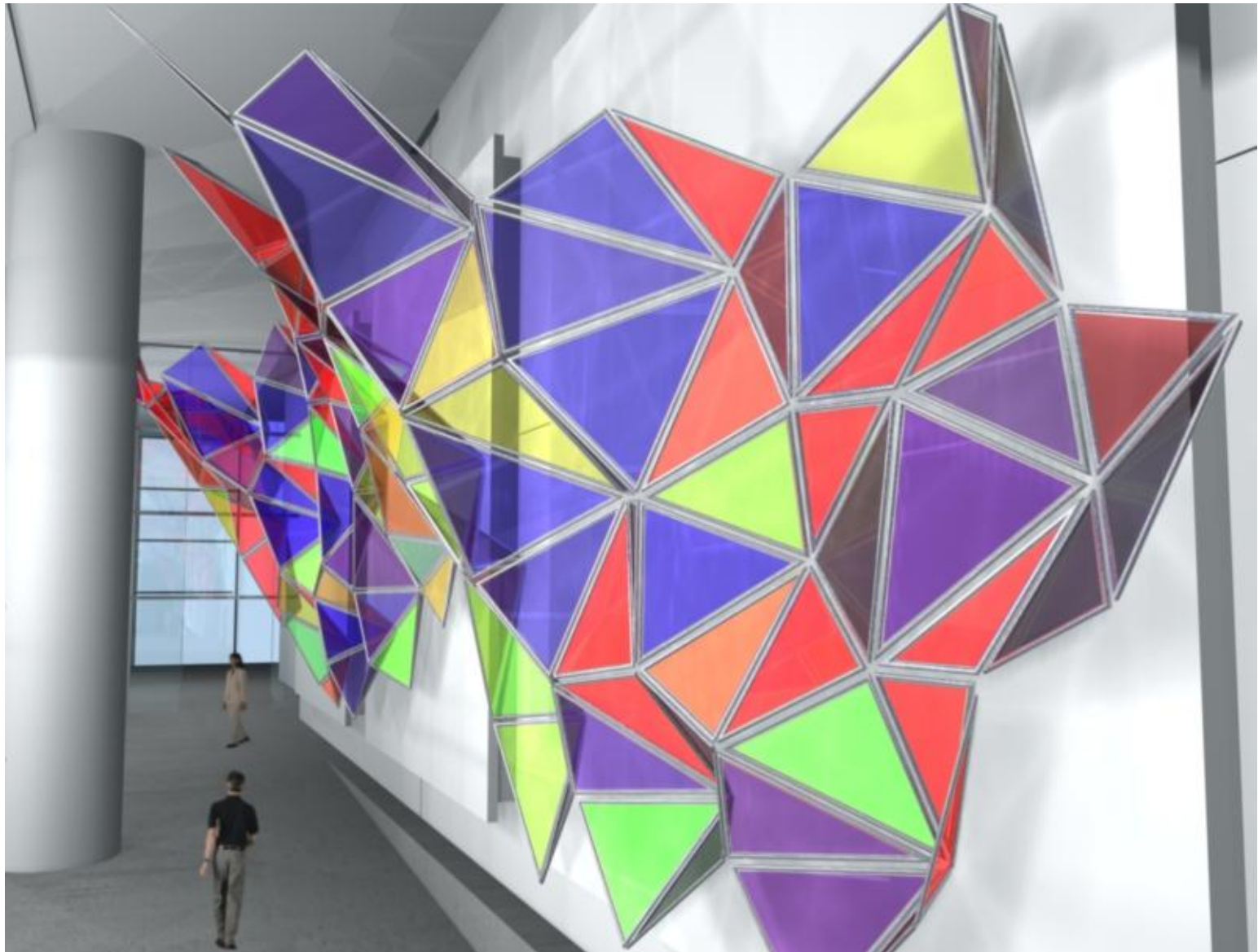


*Hexagonal Perturbation, 2010*

Machine Billet aluminum with extreme-effect  
acrylic urethane

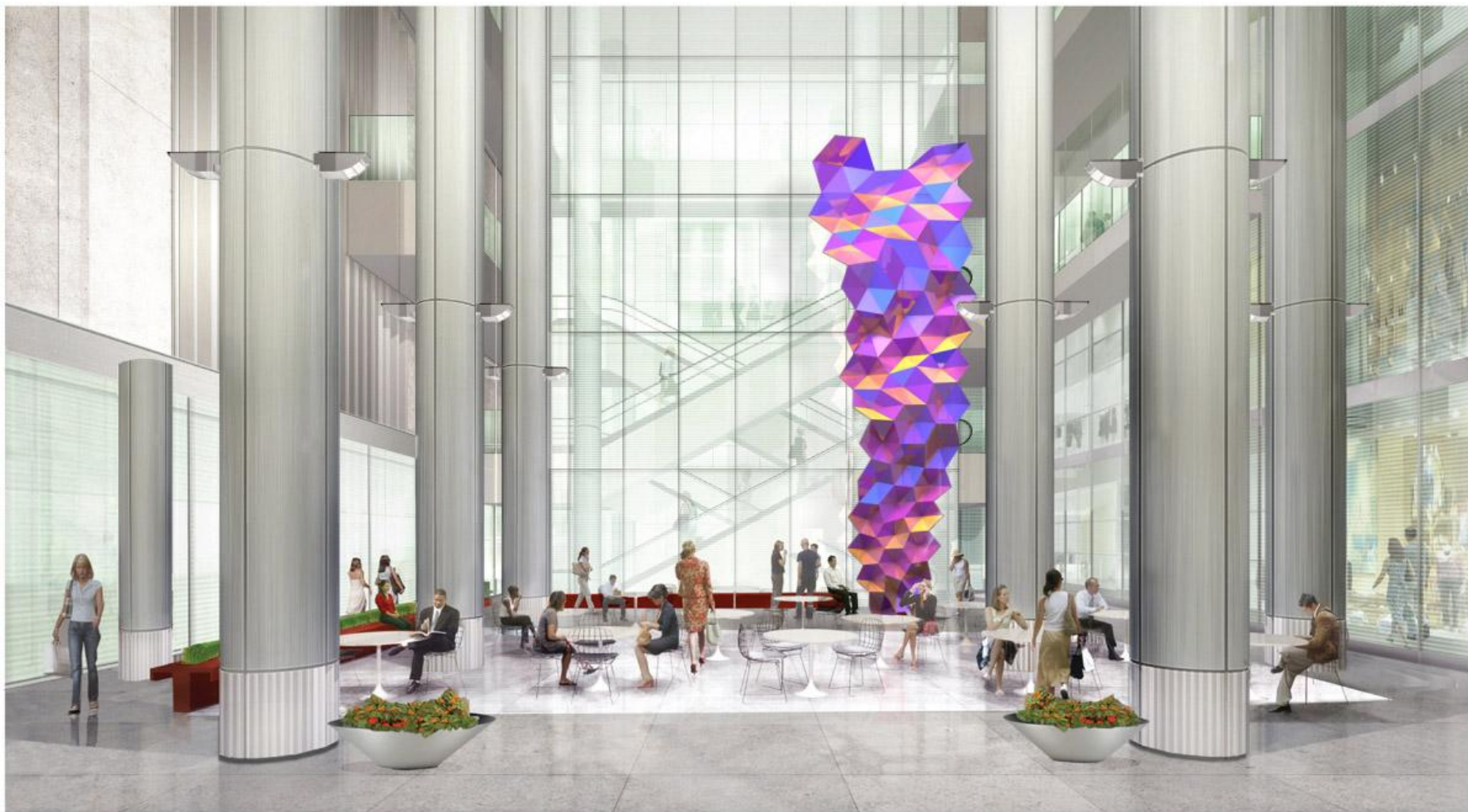
31 x 22 in.

Conceptual rendering for potential commission,  
location unknown





Conceptual rendering for potential commission, location unknown





5 Unit Superimposed Circuit Painting, 2007. 120"h. x 192"w. x 3" deep. Acrylic urethane on ½" aluminum plate. Collection - Cohen Brothers Realty, NYC and installed at the Decorative Center, Houston. © Christian Eckart, 2007



Private commission Houston, Texas, 2002  
Acrylic urethane on aluminum  
overall, 4 units 45" dia. x 6" deep  
198" high x 65" wide



# UH Faculty artwork



*Videology #1 (American Flag), 1982-2004*

Digital chromogenic photograph

24 x 24 in.

All prints in this series are  
\$2,500.00 each



*Videology #14 (Electric Chair),*

1982-2004

Digital chromogenic  
photograph

24 x 24 in.





*Videology #10*, 1982-2004

Digital chromogenic  
photograph

24 x 24 in.



*Videology #16 (Preqcher),*  
1982-2004

Digital chromogenic  
photograph  
24 x 24 in.





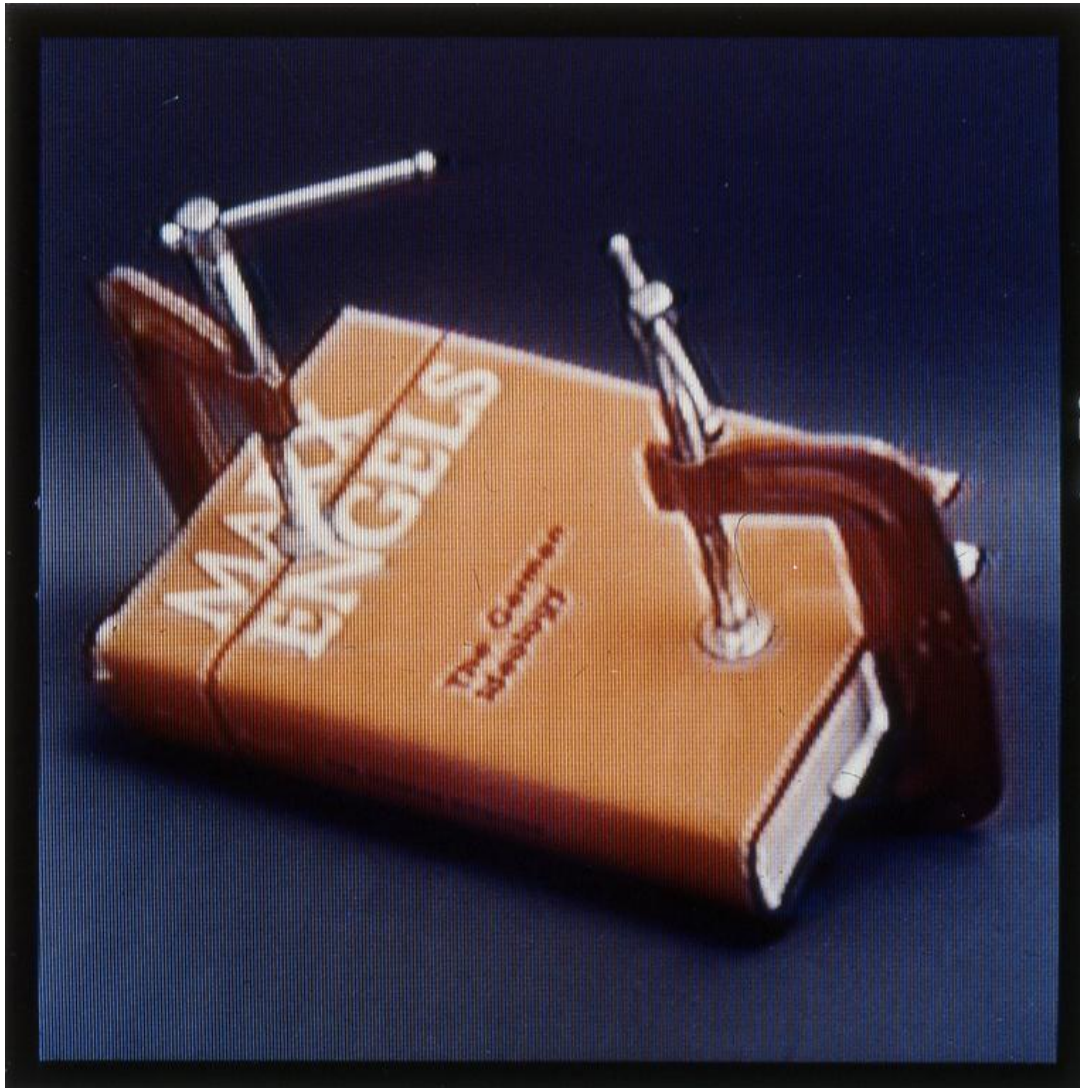
*Videology #17 (Dancers)*

1982-2004

Digital chromogenic photograph

24 x 24 in.





*Videology #20 (Marx/Engles)*

1982-2004

Digital chromogenic  
photograph

24 x 24 in.



*Videology #29 (Football Player)*  
1982-2004  
Digital chromogenic photograph  
24 x 24 in.





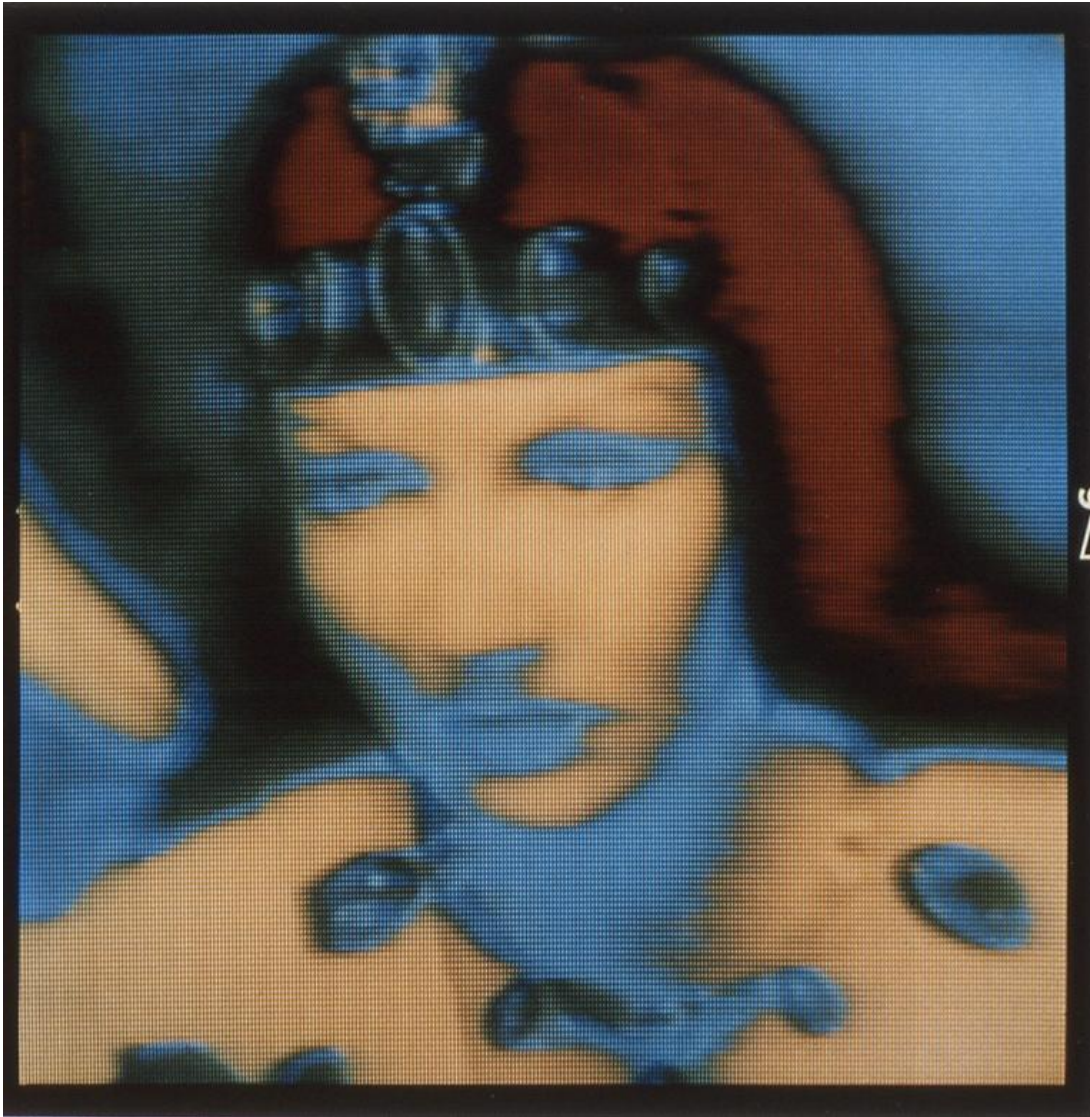
*Videology #38 (Odalisque)*

1982-2004

Digital chromogenic  
photograph

24 x 24 in.





*Videology #41 (Claudette)*

1982-2004

Digital chromogenic photograph  
24 x 24 in.



*Videology #45 (Spilled Milk)*

1982-2004

Digital chromogenic photograph

24 x 24 in.





*Videology #61 (Lovers)*

1982-2004

Digital chromogenic photograph

24 x 24 in.





*Videology #73 (Paints)*

1982-2004

Digital chromogenic photograph

24 x 24 in.



*Videology #78 (Mystery)*

1982-2004

Digital chromogenic  
photograph

24 x 24 in.





*Videology #105 (A-bomb)*

1982-2004

Digital chromogenic  
photograph

24 x 24 in.





*Videology #117 (Mickey)*

1982-2004

Digital chromogenic  
photograph

24 x 24 in.



*Worldmaker*, 1992  
Type C photo, ed. 2  
39.5 x 36.5 in.  
\$7,000.00



*Sunset Clause*, 2000

Lambda photographic print, ed. 2

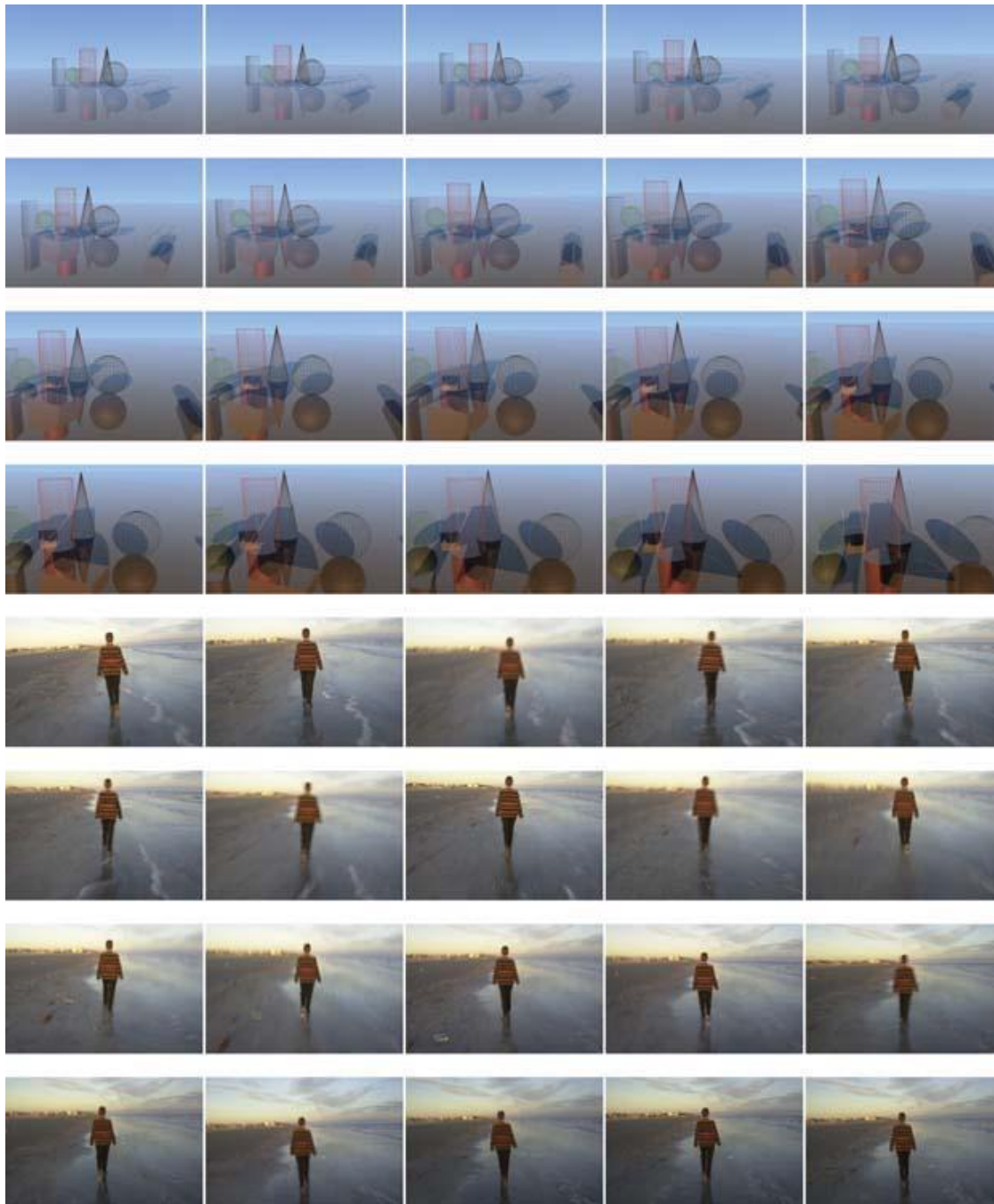
79 x 22 in.

\$10,000.00





*The Mirror*, 2002  
Lambda photographic print,  
unique  
40 x 39 in.  
\$5,500.00



*On the Verge: Galveston  
West Beach/Primitives,*

2004

archival pigment print, ed. 5

44 x 38 in.

\$3,000.00

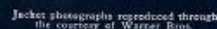




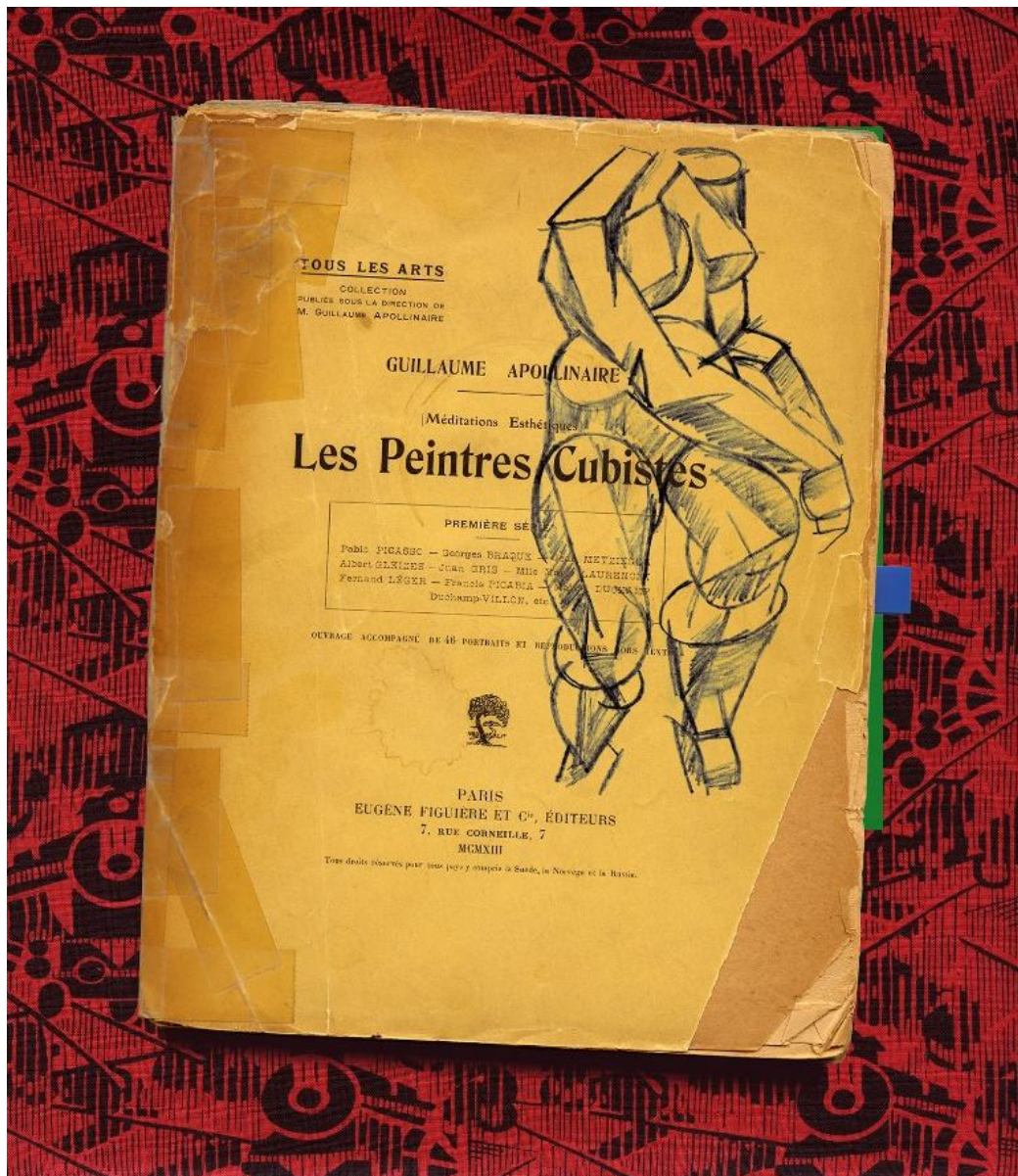
*On the Verge: Sonoran  
Desert/Enfolded Cube, 2004*  
Archival pigment print, ed. 5  
44 x 38 in.  
\$3,000.00



\$10,000.00







*Les Cubists: The Russian  
Invasion, 2010*

Archival pigment print, ed :a/p  
44 x 39 in.  
\$3,000.00

*La Musique*, 2011

Archival pigment print, ed: 5

18 x 62"

\$3,000.00





*The Black Book*, 2010  
archival pigment print, ed: 5  
16 x 21 1/2"  
\$1300



*The Red Book*, 2010  
archival pigment print, ed: 5  
16" x 21 1/2"  
\$1300



*Homage I: Josef Albers, 2010*  
archival pigment print, ed: 5  
16 1/2" x 21"  
\$1300





*Severance*, 2010  
archival pigment print, ed: 5  
16 1/2" x 21"  
\$1300



*Christian Manliness and Other Sermons*, 2010

archival pigment print, ed: 5

21 1/2" x 30 3/4"

\$1700



*White on White* (Kazimir Malevich), 2010  
archival pigment print, ed: 5  
21 1/2" x 30 3/4"  
\$1700





Al Souza



*Hello, Hello, Hello,*  
2005

Puzzle parts and  
glue on wood  
72 x 72 in.  
\$18,000.00





*Sweet Things*, 2005  
72 x 84 in.  
\$18,000.00





*Windows on the World,*  
2005  
72 in. diameter  
\$18,000.00





*Aroma*, 2006  
72 x 72 in.  
\$18,000.00



detail of *Aroma*







*Tijuana, Donkeys*, 2006  
72 x 72 in.  
\$18,000.00





*Wormhole*, 2006

72 x 72 in.

\$18,000.00

# Gael Stack





Untitled, 2008  
Oil on canvas  
84 x 64 in.  
\$18,000.00





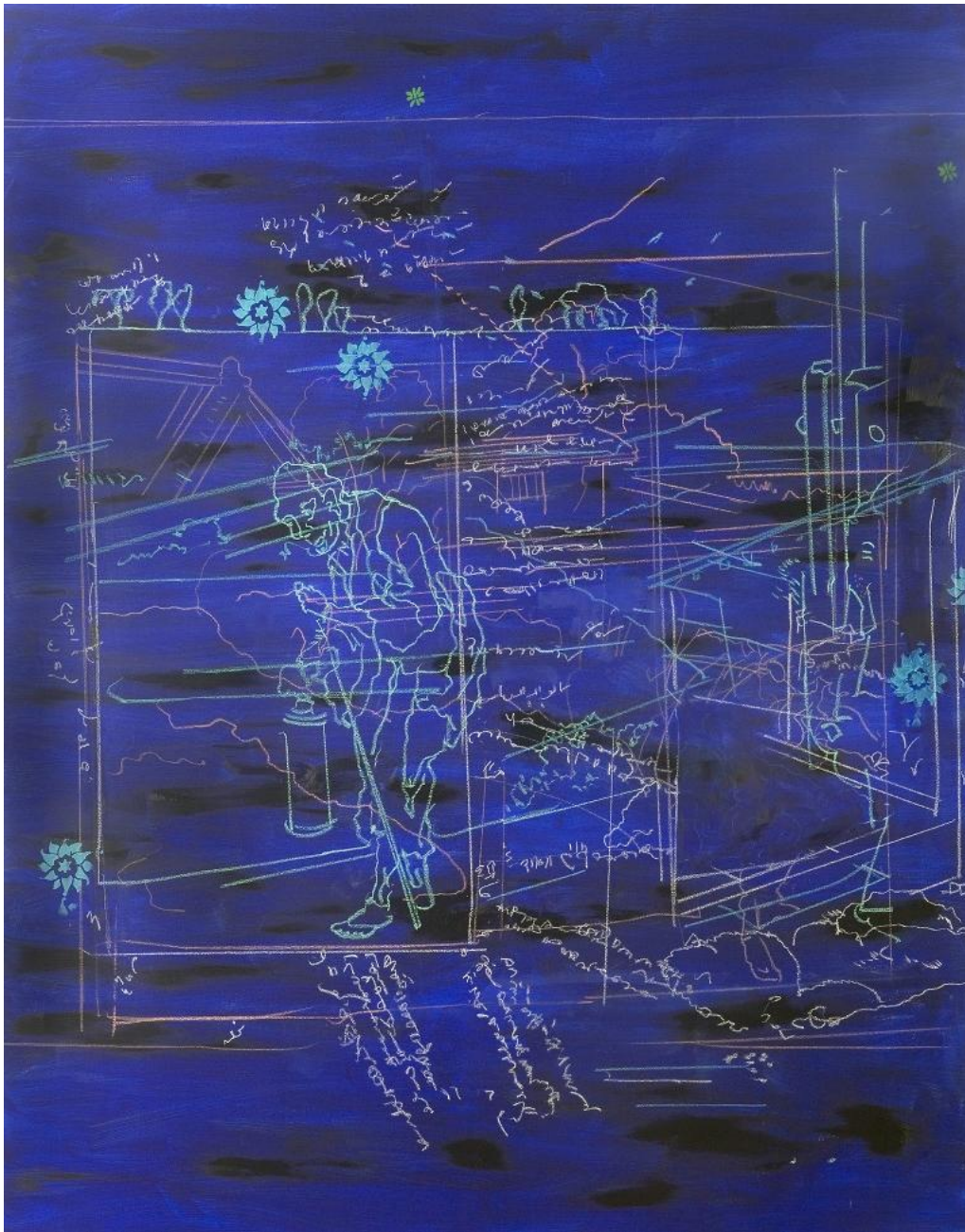
Untitled, 2005

o/c

84 x 62 in.

\$18,000.00





Untitled, 2007

o/c

76 x 60 in.

\$16,000.00





Untitled, 2008

o/c

70 x 60 in.

\$16,000.00

Luis Jimenez

*Sodbuster*, 1989

Fiberglass, 84 x 63 x 288 in.

\$500,00.00

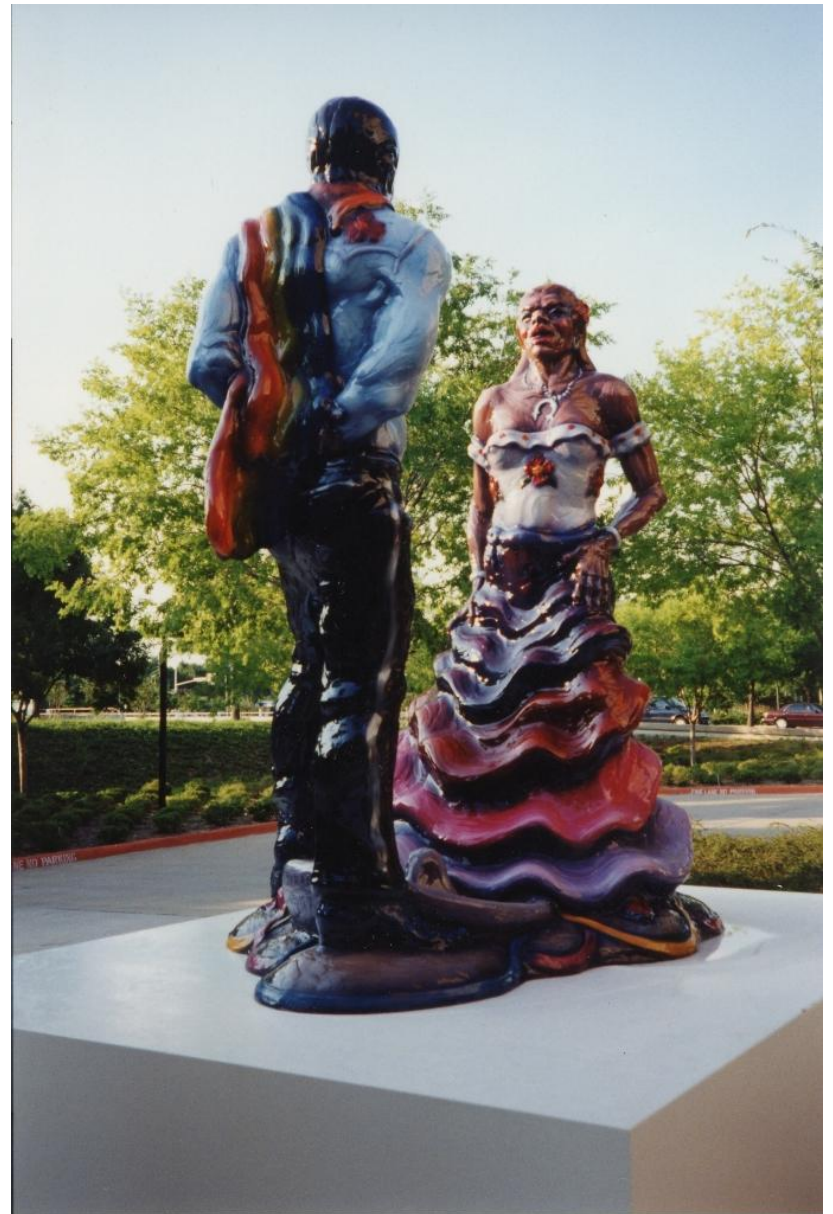








*Fiesta Dancers*, 1996, fiberglass, 114 x 96 x 59 in. \$450,000.00





*Fiesta Dancers-Working Drawing #2*, 1989, crayon and acrylic on linen, 150 x 153 in. \$150,000.00

