



Emergency Management Bureau

UNIVERSITY of **HOUSTON**

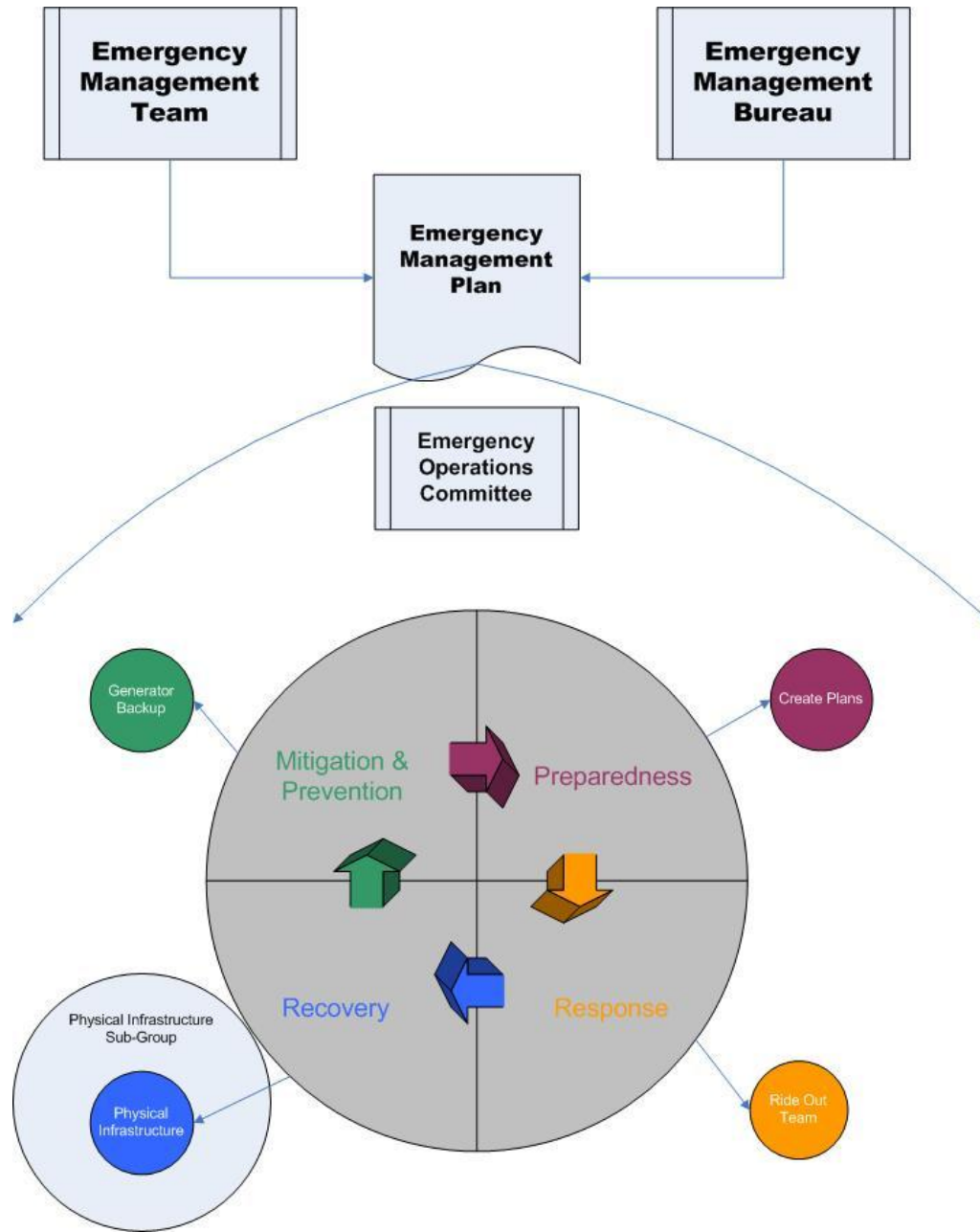
Emergency Operations Committee

- **Proposed Purpose Statement:**

To improve campus-wide emergency operations through:

- 1.) campus-wide collaboration,
- 2.) coordination,
- 3.) and the development of specific emergency procedures and processes

Understanding the Structure



UH Emergency Management Plan

- is an “*All-Hazards Approach*” plan which provides the framework to assemble, mobilize and coordinate responders and personnel with the goal of effectively managing any incident.
- designed to protect lives and property through an effective use of campus and community resources.
- designed as a flexible emergency management plan utilizing NIMS and ICS.

UH Emergency Management Plan

NIMS

- A comprehensive, nationwide systematic approach to incident management
- A core set of doctrine, concepts, principles, terminology, and organizational processes for all hazards. It is not a detailed operational or resource plan.
- Scalable, so it may be used for all incidents (from day-to-day to large-scale).
- Essential principles for a common operating picture and communications interoperability.
- Standardized resource management procedures for coordination among different jurisdictions and organizations.

Emergency Operations Committee Structure

